

2021 ANNUAL REPORT

Office of the Larimer County Coroner / Medical Examiner

James A. Wilkerson IV, MD—Coroner/Chief Medical Examiner

1600 Prospect Park Way, Suite 101
Fort Collins, CO 80525
larimercoroner@larimer.org



PATRICK C. ALLEN, MD
REGIONAL FORENSIC
SCIENCES CENTER

Table of Contents

Letter to Citizens	1
Mission Statement and Function of the LCMEO.....	2-5
Explanation of Data.....	7
General Information and Overall Death Statistics	8-12
Suicide Statistics	13-16
Accident Statistics	17-19
Homicide and Gun-Related Statistics.....	20-23
Overdose Deaths.....	24-27
Child Deaths	28-29
Unidentified Remains.....	30-31
Public Administrator Cases & Exhumations	32-33
Organ and Tissue Donations Statement.....	34
Budget	35
Staff Organizational Chart	37



James A. Wilkerson IV, M.D.
Coroner and Chief Medical Examiner

OFFICE OF THE LARIMER COUNTY CORONER/MEDICAL EXAMINER
1600 Prospect Park Way, Suite 101 • Fort Collins, CO 80525
Phone: 970-498-6161 • Fax: 970-498-6170



To the Citizens of Larimer County,

The information you will find in this annual report has been gathered from records held by the Larimer County Office of the Coroner/Medical Examiner, Donor Alliance, and the State of Colorado Health Department. Our staff strives to serve Larimer County with integrity and professionalism. It is our wish to provide the public with the most up-to-date and complete information possible in a format that is accurate and easy to read. Many of the statistics, charts, and graphs will vary year-to-year, as trends are followed and new or different information is requested.

We hope these statistics will be of value to you. If you have any questions or need any further information, please feel free to contact us.

James A. Wilkerson IV, MD
Larimer County Coroner
Chief Medical Examiner



Mission Statement and Function of the Medical Examiner's Office

*To seek the truth;
To combine forensic science and medicolegal death investigation
to determine the cause and manner of death;
To serve the community with professionalism and integrity.*

The Office of the Coroner/Medical Examiner operates as a separate and independent law enforcement agency. It is a division of the Larimer County government and is funded through the Larimer County Commissioners by the citizens of Larimer County. The Medical Examiner's Office serves the residents of Larimer County by incorporating the fields of medicine and forensic science to investigate any sudden and unexpected death, or those deaths that occur under violent or suspicious circumstances. Colorado Revised Statute (CRS) 30-10-606 mandates that the Office of the Coroner investigate any death where the cause of death is unknown. When necessary to determine the cause of death, an autopsy can be ordered by the Coroner. Certain autopsies are mandated by Statute.

In early 2002, the Larimer County Medical Examiner's Office became the smallest county in the nation and the third county in Colorado to attain national accreditation as a Medical Examiner's Office through the National Association of Medical Examiners (NAME). This is a stringent accreditation of over 300 requirements which includes that a NAME Office is run by a Forensic Pathologist/Medical Examiner, and at least one Investigator be certified through the American Board of Medicolegal Death Investigators (ABMDI). We have maintained NAME Accreditation continuously since 2002. Our most recent inspection in mid-2020 found our office to be "exemplary" compared to offices throughout the country.

The Coroner must be elected every four years. We are fortunate that for over 40 years, Larimer County has continually elected a forensic pathologist/medical examiner as its Coroner, maintaining a professional medically-run office. Our Larimer County Coroner/Chief Medical Examiner is James A. Wilkerson IV, MD. Dr. Wilkerson has over 29 years' experience as a Forensic Pathologist and is triple-board certified in Forensic, Anatomical, and Clinical Pathology. Forensic Pathology is the branch of medical science that is applied to the legal investigation of sudden, unexpected, violent, or suspicious deaths. Also included in the Forensic Pathology partnership are Michael A. Burson, PhD, MD, and Stephen J. Cina, MD, each of whom is a Forensic Pathologist/ Regional Medical Examiner.

The Larimer County Coroner/Medical Examiner's staff includes a Chief Deputy Coroner/Chief Investigator and seven full-time and two part-time Deputy Coroner/Investigators. All investigators are trained extensively in medicolegal death investigation through ongoing education. All investigators are Certified Death Investigators through the Colorado Coroners Association and are encouraged to complete the National Death Investigator certification process through the American Board of Medicolegal Death Investigators. Completing our staff is the Administrative Office Manager, the Administrative Assistant and three morgue dieners.

Mission Statement and Function of the Medical Examiner's Office

Duties of the Medical Examiner's Office are dictated by CRS 30-10-606 and the National Association of Medical Examiners (NAME). This includes:

- To be available to respond to a death scene, 24 hours a day, 7 days a week;
- To investigate the scene of death;
- To take all necessary steps needed to positively identify the decedent;
- To determine the date and time of death;
- To collect, preserve, and process pertinent evidence at the scene;
- To photograph, document, and/or sketch the scene;
- To remove the body from the scene in a dignified manner;
- To interview witnesses, family members, physicians, employers, friends, neighbors, etc.;
- To compile and document information in unbiased, accurate, and complete reports;
- To assist at autopsy, which will ultimately determine the cause of death;
- To notify next-of-kin;
- To process and compare fingerprints from weapons and other items;
- To provide information and assistance to families;
- To interact with other Law Enforcement, governmental, and health agencies, i.e. police/ sheriff, fire, Emergency Medical Services, attorneys, OSHA, FBI, Consumer Product Safety Commission, DEA, school districts, hospitals, funeral homes, organ donation teams, etc.;
- To release information to public through press releases and/or media interviews;
- To provide testimony at depositions and in court;
- To provide training and education in the field of Death Investigation to other law enforcement, health, and community service agencies.

Mission Statement and Function of the Medical Examiner's Office

The investigative and medical staff seek to find answers to the questions which are important to the decedent's family, involved law enforcement agencies, insurance companies, the judicial system, Consumer Product Safety Commission, the Colorado Department of Health, and OSHA, to name a few. The pursuit of civil or criminal proceedings is in part determined by the ability of the Medical Examiner's Office to determine the cause and manner of death. This unique makeup of job responsibilities means the Medical Examiner's Office performs both a public service and a law enforcement role that requires the Medical Examiner to scrutinize every death within the jurisdiction to determine the events that led to that death.

The Medical Examiner's Office also functions as an advocate for families by working with them to insure they are notified of the death, relaying the medical information from autopsies, and placing families in touch with other agencies that will assist in the grieving process. Many cases brought to the Medical Examiner's office are dealt with in a routine manner because the identity of the decedent is known, and next-of-kin can be readily contacted. However, there are occasional cases that are difficult to resolve. In these deaths, one or more pertinent pieces of information are missing or difficult to establish. Identification of the deceased may require locating dental records, fingerprints, or surgical records. The decedent may not have next-of-kin, or the next-of-kin may be far removed and difficult to locate. These cases may take more time, but the Medical Examiner's staff will pursue any and all leads to resolve these issues.

The postmortem examination (autopsy) on each decedent includes the preservation of evidence, body fluids, and tissue for microscopic examination, toxicological analyses, trace evidence analysis, and other tests deemed necessary. Photographs are taken at autopsy both externally and internally and have value both as evidence and additional documentation of cases.

The Medical Examiners and Investigators provide testimony at depositions and in court. The staff participates in meetings with police, physicians, and attorneys (Prosecution and Defense) in a variety of criminal and civil cases.

Our office works closely with organ and tissue procurement teams in a cooperative effort to ensure that the decedent's wishes and those of their family are honored.

Death investigation requires frequent contact between our office and various media personnel. The staff is skilled in responding to media inquiries that occur daily.

Deaths which fall under the jurisdiction of the Coroner are defined by statute (CRS: 30-10-606) and include, but are not limited to, the following circumstances:

- All victims of external violence, unexplained cause, or deaths with suspicious circumstances (including all actual or suspected homicides, suicides, and accidents);
- Deaths where no physician is in attendance, or where, though in attendance, the physician is unable to certify the cause of death;

Mission Statement and Function of the Medical Examiner's Office

- Deaths from thermal, chemical, or radiation injury, or death from any injury sustained prior to hospital admission;
- Deaths from criminal abortion, including any situation where such abortion may have been self-induced;
- Deaths from a disease which may be hazardous or contagious or which may constitute a threat to the health of the general public;
- Deaths occurring while in the custody of law enforcement officials or while incarcerated in a public institution;
- When the death was sudden and happened to a person who was in good health;
- All "crib deaths" (Sudden Unexpected Infant Death Syndrome);
- All patients that die within 24 hours of admission to a hospital or nursing home facility.

Investigators must participate in ongoing continuing education, including:

- Death Investigation Seminars and Certification
- Medical and Forensic Seminars
- Accident Investigation
- Crime Scene Investigation
- Evidence Collection and Preservation
- Medical Training
- Interviewing and Dealing with Grief

The Medical Examiner's staff provides regular training and education to other law enforcement, health, and community service agencies concerning the roles and functions of this office. In 2018, our Medico-legal Investigators conducted a number of educational outreach training presentations to local agencies, schools, community service groups, and individuals, including but not limited to:

- AIMS and Front Range Community College Peace Officer Academies
- Larimer County Victim's Advocates
- Colorado Zero Suicide/Office of Suicide Prevention
- Rocky Mountain High School
- Poudre Valley High School
- Various individual meetings with students and citizens throughout the community.

We have also been asked to train other Coroners and Deputy Coroners throughout the State of Colorado as part of the Colorado Coroner's Association.

Explanation of Data

The Larimer County Coroner's Office was established in 1881 and records have been kept continuously since. The vast majority of information presented here has been compiled from deaths that fell under the jurisdiction of the Larimer County Coroner/Medical Examiner during the 2020 calendar year. Many of the charts and graphs include data from the last 5-10 years, as needed to show trends.

The geographic area served by the Larimer County Medical Examiner's Office includes 2,634 square miles, which is located in the north central part of the state. Weld and Jackson Counties are to the east and west, respectively, with Boulder County on the south and the State of Wyoming on the north. Larimer is the 6th largest county in Colorado, based on population. The population of Larimer County is approximately 356,899 and includes the cities and towns of Estes Park, Berthoud, Loveland, Ft. Collins, and Wellington. Small communities such as Timnath, LaPorte, Bellvue, Drake, Glen Haven, Livermore and Red Feather Lakes are also within the boundaries of Larimer County. The county extends to the Continental Divide and includes much of Rocky Mountain National Park. Over 50% of Larimer County is publicly owned, most of which is land within Roosevelt National Forest and Rocky Mountain National Park. The County has two school districts; Poudre School District R-1 and the Thompson Valley School district RJ-2. Larimer County has nine (9) State highways, three (3) US highways, and one Interstate highway crossing through its boundaries.

The data in this report is summarized from individual cases under the jurisdiction of the Coroner/Medical Examiner and presented here in aggregate form. Long term death statistics were gathered from Coroner's statistics over the last 10 (or more) years. Current yearly information and statistics were gathered from deaths in 2021.

The "Undetermined" Manner of Death category includes deaths in which the manner could not clearly be determined, as in some drug overdoses where there is no clear evidence as to whether the injury occurred with intent or accidentally. Undetermined is also used for Sudden Unexpected Infant Death Syndrome (SUIDS), and in other cases, such as found skeletal remains, where no other clear manner of death can be determined.

It is the intention of the Larimer County Medical Examiner's Office to provide factual statistics and information for and requested by the citizens of Larimer County. Graphs and tables, which display information such as classification of death, drugs of abuse, death rates, and motor vehicle crash statistics have been selected as those most likely to assist other agencies and individuals seeking statistical information.

Abbreviations are used for modes of death throughout the various charts and graphs in this report. They are as follows:

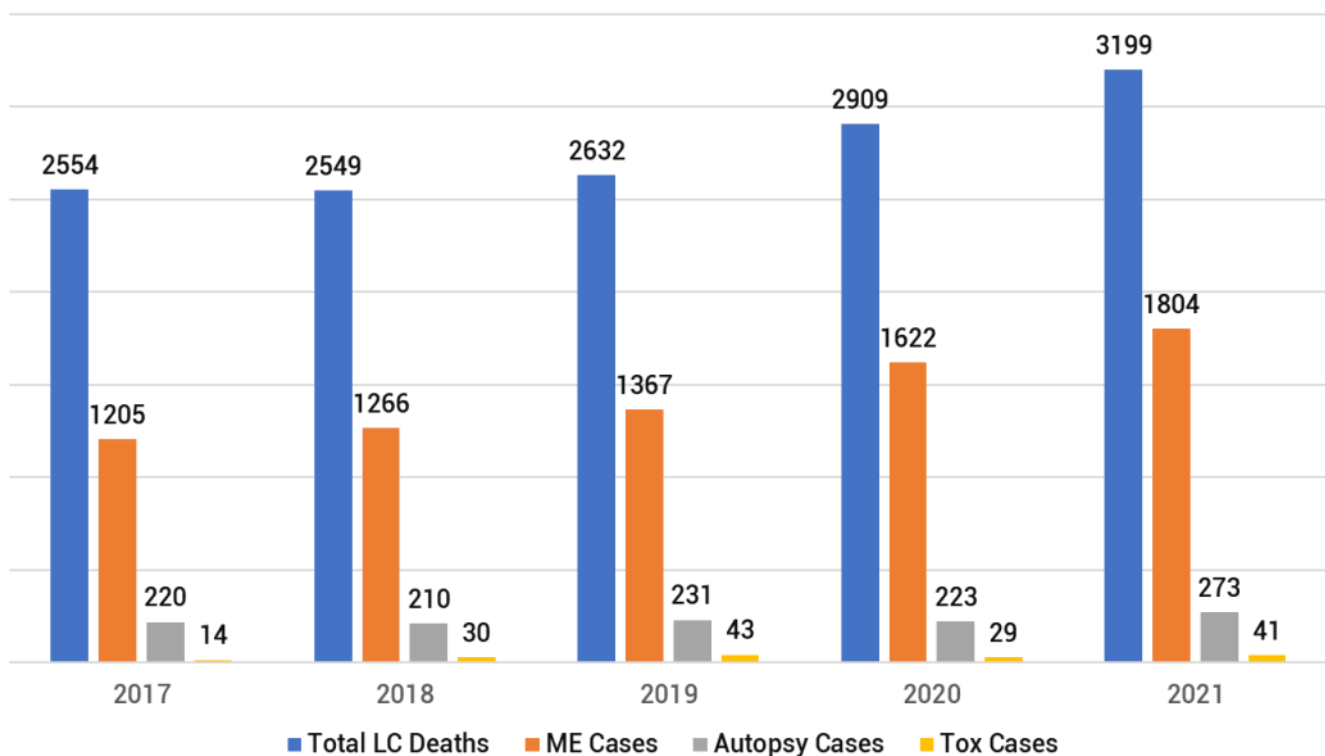
- CO (carbon monoxide)
- GSW (gunshot wound)
- AH (asphyxia by hanging)
- MVC (motor vehicle crash)
- OD (overdose)

Total Larimer County Deaths VS. Medical Examiner Cases in 2021

Larimer County Medical Examiner's Office requires all deaths within Larimer County to be reported to our office. The only exception is fetal deaths under 21 weeks gestation, which do not fall under Coroner Statute. In 2021, the total number of deaths reported to our office was 3,199. Of those cases, 1,804 (56.4%) required further investigation by the Medical Examiner's Office. Larimer County Medicolegal Investigators review medical information and conduct necessary telephone interviews on all M.E. cases, and it was deemed necessary to respond to the death scene and conduct a thorough medicolegal scene investigation in 570 of the 1,804 cases. Out of these investigations, complete forensic autopsies were performed in 273 cases (47.9%) of the accepted Coroner cases. Plus, in 41 additional cases, only toxicology studies were deemed necessary and 37 cases were transferred back to the jurisdiction in which the event originated. The remaining 1,455 cases not autopsied or tested for toxicology were those in which the scene investigation, circumstances of death, medical documentation, interviews, social history, and/or external examination of the body provided sufficient information for certifying the cause of death.

There were 1,395 deaths which occurred in nursing homes, facility hospices, or hospital settings longer than 24 hours, and with a known fatal disease process and no evidence of extenuating circumstances, thus enabling the primary physician to certify the cause of death without Medical Examiner involvement. The following tables, graphs, and figures summarize all cases where the Medical Examiner assumed jurisdiction.

Total County Deaths, M.E. Cases, Autopsy Cases, Toxicology Only Cases



Manner of Death

The **Manner of Death** is a classification of the way in which the Cause of Death came about, whether by force of natural events, accidental means, self-inflicted wounds, or other external forces. Manner of Death is determined largely by means of the investigation. There are only five (5) manners of death, listed below.

NATURAL - Death caused *solely* by disease. If natural death is hastened by injury or any other non-natural event (ex: fall), the manner of death will not be considered natural. If the terminal disease process is *caused* by a non-natural event (ex: pneumonia due to long-term bed confinement as a result of a motor vehicle accident), the manner of death will not be considered natural. Most deaths are Natural deaths and over half occur in hospital or nursing home setting and hence, do not fall under Coroner jurisdiction. Of the total 3,199 deaths in Larimer County in 2021, 2,862 were Natural deaths, meaning that only 337 deaths were not Natural events.

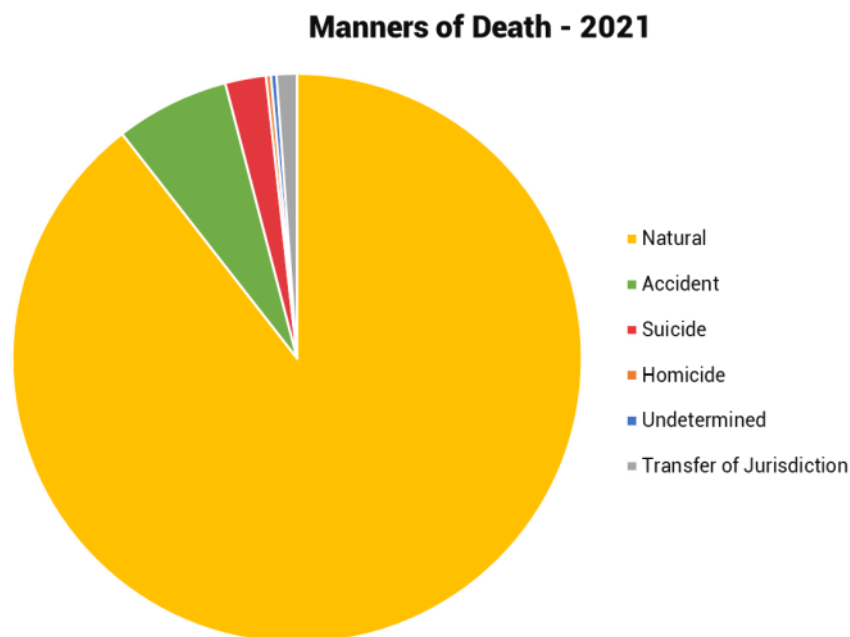
UNDETERMINED - Manner assigned when there is insufficient evidence, or conflicting/equivocal information (especially about intent), to assign a specific manner. In 2021, we had 10 deaths where Manner could not be accurately determined. These are listed as Undetermined.

ACCIDENT - Death other than natural where there is no evidence of intent; i.e. an unintentional event or chain of events. This category includes most motor vehicle accidents, falls, drowning, accidental drug overdoses, drug reactions, etc. In 2021, we had 207 Accidents, 42 of which were motor vehicle fatalities.

SUICIDE - Death as a result of a purposeful action set in motion (explicit or implicit) to end one's life. In 2021, there were 74 deaths certified as Suicides.

(TRANSFERS) - Jurisdiction transferred back to the originating County where the injury occurred in 37 cases.

HOMICIDE - Death resulting from injuries intentionally inflicted by another person (explicit or implicit) or inflicted on another by one's grossly reckless behavior (does not include vehicular homicide). In 2021, there were 9 Homicides in Larimer County.



2021 Year-End Statistical Overview

In 2021, the total number of deaths reported to our office was 3,199. Of those cases, 1,804 required further investigation by the Medical Examiner's Office. Of the 1,804 deaths, 1,467 were Naturals, 207 were Accidents, 74 were Suicides, 9 were Homicides, 37 were transferred back to the County of origin, and 10 were classified as Undetermined. Of the 1,804 deaths, our 9 Medicolegal Investigators responded to and conducted complete medicolegal investigations into 570 death scenes.

Not every accident or suicide is necessary to autopsy. This usually occurs when the person has been a patient in a hospital or nursing home and there is adequate medical history and a documented diagnosis which can eliminate the need for an autopsy. However, a complete medicolegal investigation is still done.

ACCIDENTS	207 total	125 autopsied; 14 toxicology only
	65 - Falls	
	42 - Motor Vehicle Crash (MVC)	
	68 - Drug Overdose (OD)	
	01 - CO	
	12 - Drowning	
	06 - Asphyxia (mechanical, positional)	
	01 - Asphyxia (ligature)	
	02 - Hypo/Hyperthermia	
	03 - Fire/Thermal	
	01 - Aircraft	
	01 - Firearm	
	02 - Blunt Force	
	02 - Alcohol	
	01 - Treatment Complication	
SUICIDES	74 total	72 autopsied; 1 toxicology only
	40 - Gun Shot Wound (GSW)	
	20 - Asphyxia by Hanging (AH)	
	12 - Drug Overdose (OD)	
	01 - Asphyxia (gas/hood)	
	01 - Jump/Fall	
HOMICIDES	9 total	9 autopsied
	05 - Gun Shot Wound (GSW)	
	01 - Asphyxia	
	01 - Blunt Force	
	01 - Motor Vehicle vs Bicycle	
	01 - Sharp Force	
UNDETERMINED	10 total	10 autopsied
NATURALS	1,467 total	57 autopsied; 26 toxicology only
TRANSFER OF JURISDICTION	37 total	

Total Forensic Autopsies Performed: 273

Toxicology-Only Studies: 41

2021 Suicide Information

Suicide is death caused by intentional, self-inflicted injuries. In Larimer County during 2021 there were 74 deaths by suicide. Death by Suicide comprised 4.1% of our investigated cases and 2.3% of all Larimer County deaths.

Age

Average Age..... 45
Juvenile (<18) 4
Adult 70
Oldest: 92
Youngest:..... 13

Gender

Female..... 15
Male..... 59

Race

Asian..... 1
Hispanic 3
White..... 69
Mixed/other 1

Mental Health/Suicide Notes

Left note or other message: 11/74 (15%)
Prior ideation or attempts: 16/74 (22%)

Alcohol and/or Drugs Present

(Includes over-the-counter and Rx meds, recreational and illicit drugs)

Total 53/74 (71.6%)
ETOH 22/74 (29.7%)
THC 20/74 (27.0%)

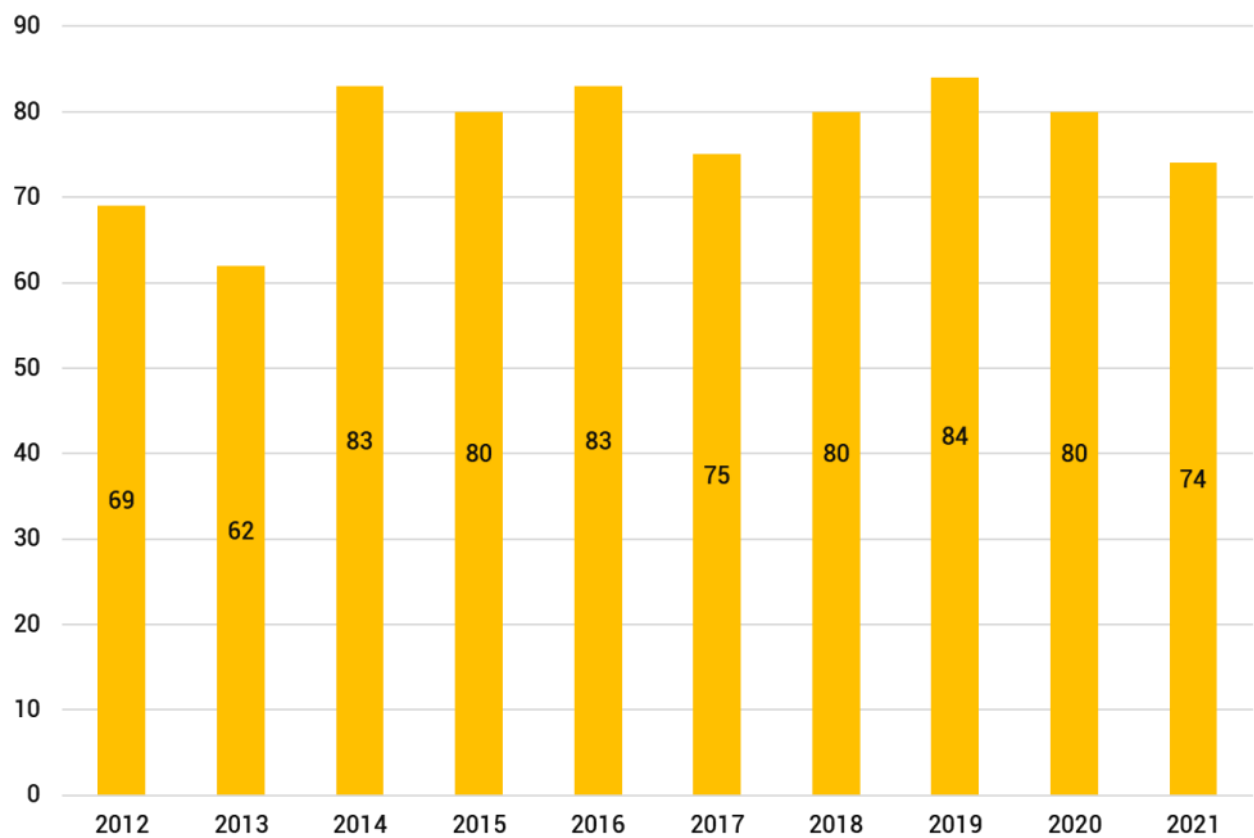
Mode of Suicide

Gun Shot Wound (GSW) 40
Asphyxia by Hanging (AH) 20
Drug Overdose (OD) 12
Asphyxia by gas/hood 1
Jump from Height 1
TOTAL **74**

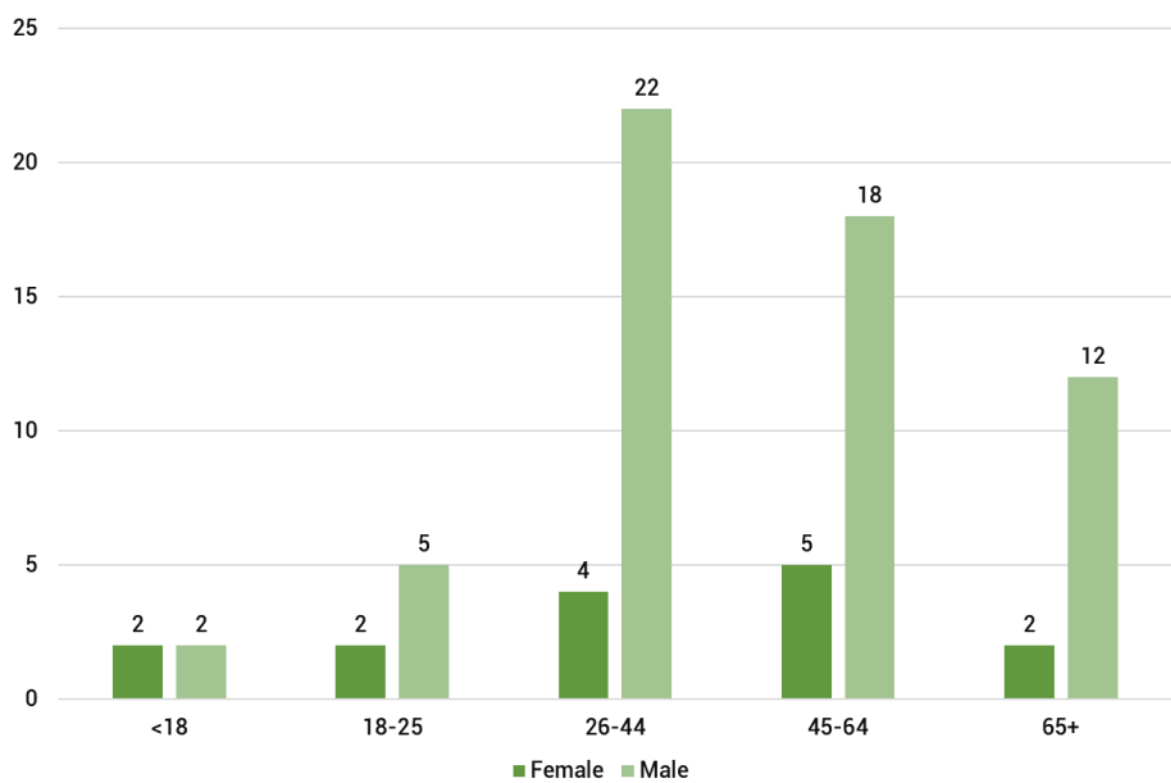
Monthly Breakdown

January 6
February 4
March 5
April 6
May 5
June 4
July 5
August 8
September 6
October 14
November 7
December 4
TOTAL **74**

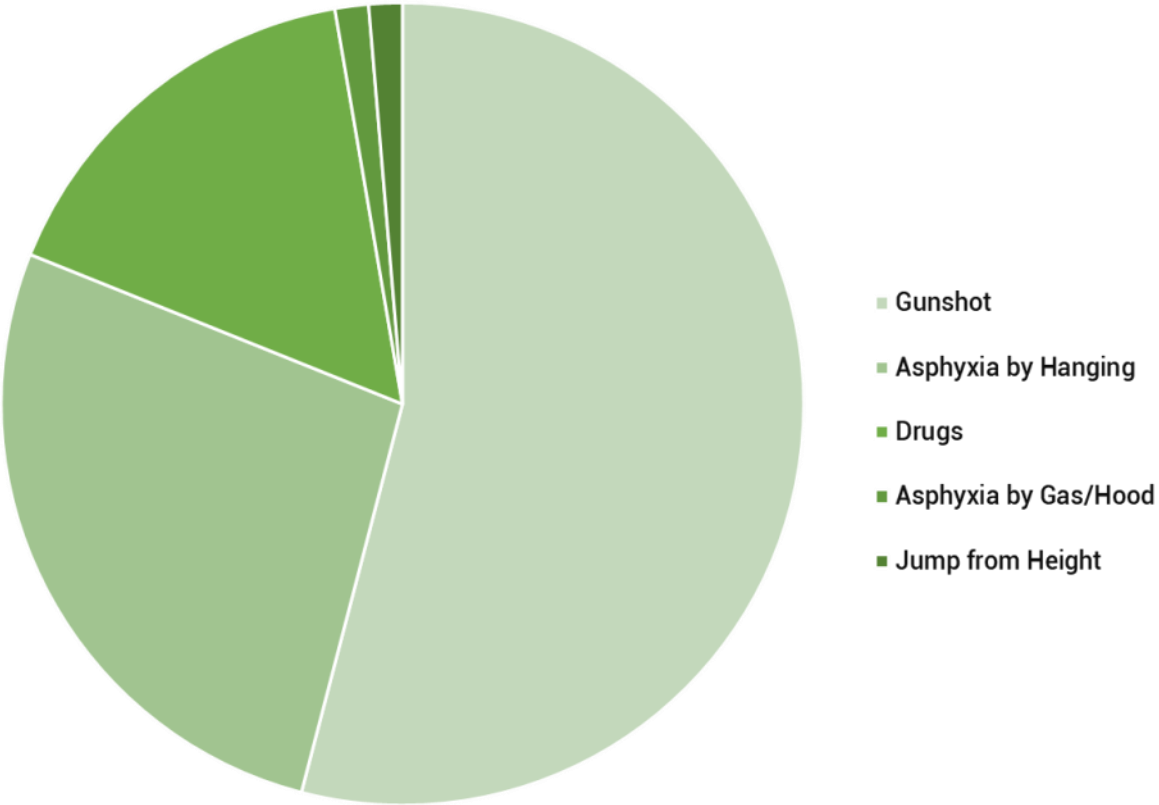
Suicide Totals - Last 10 Years: 2012 - 2021



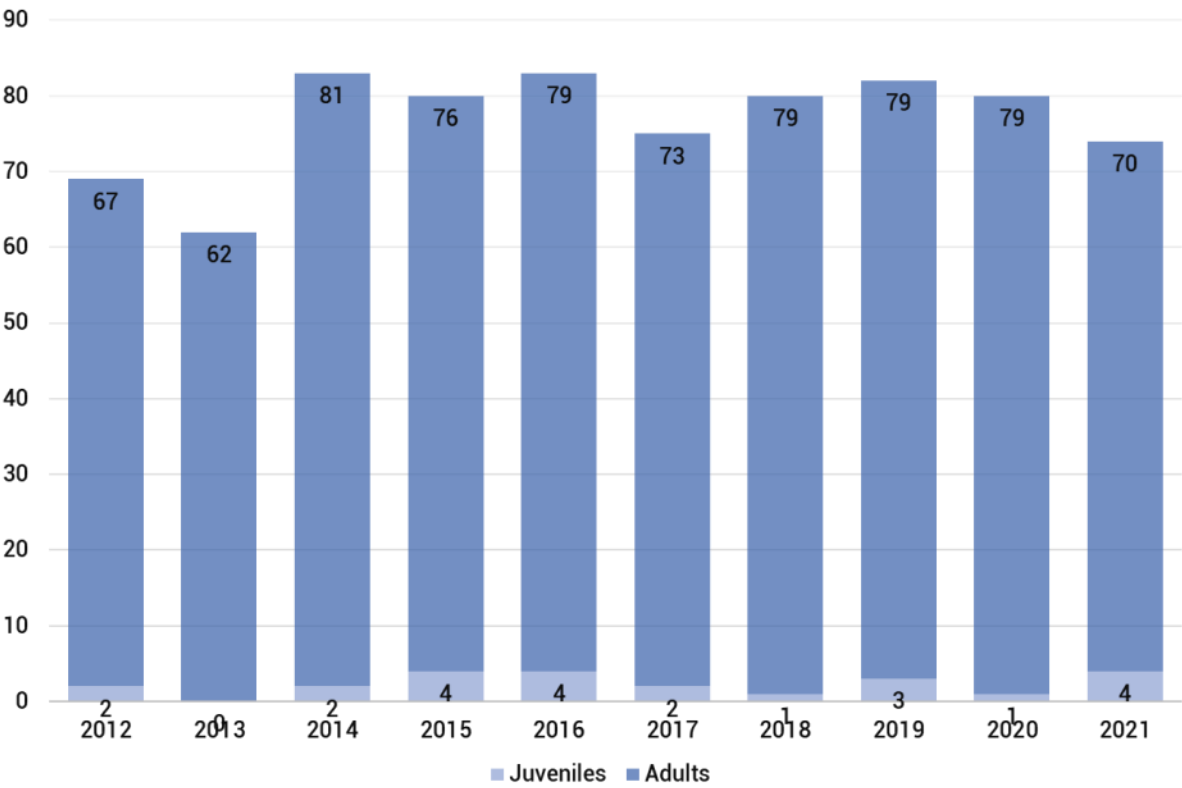
2021 Suicides by Age and Gender Distribution



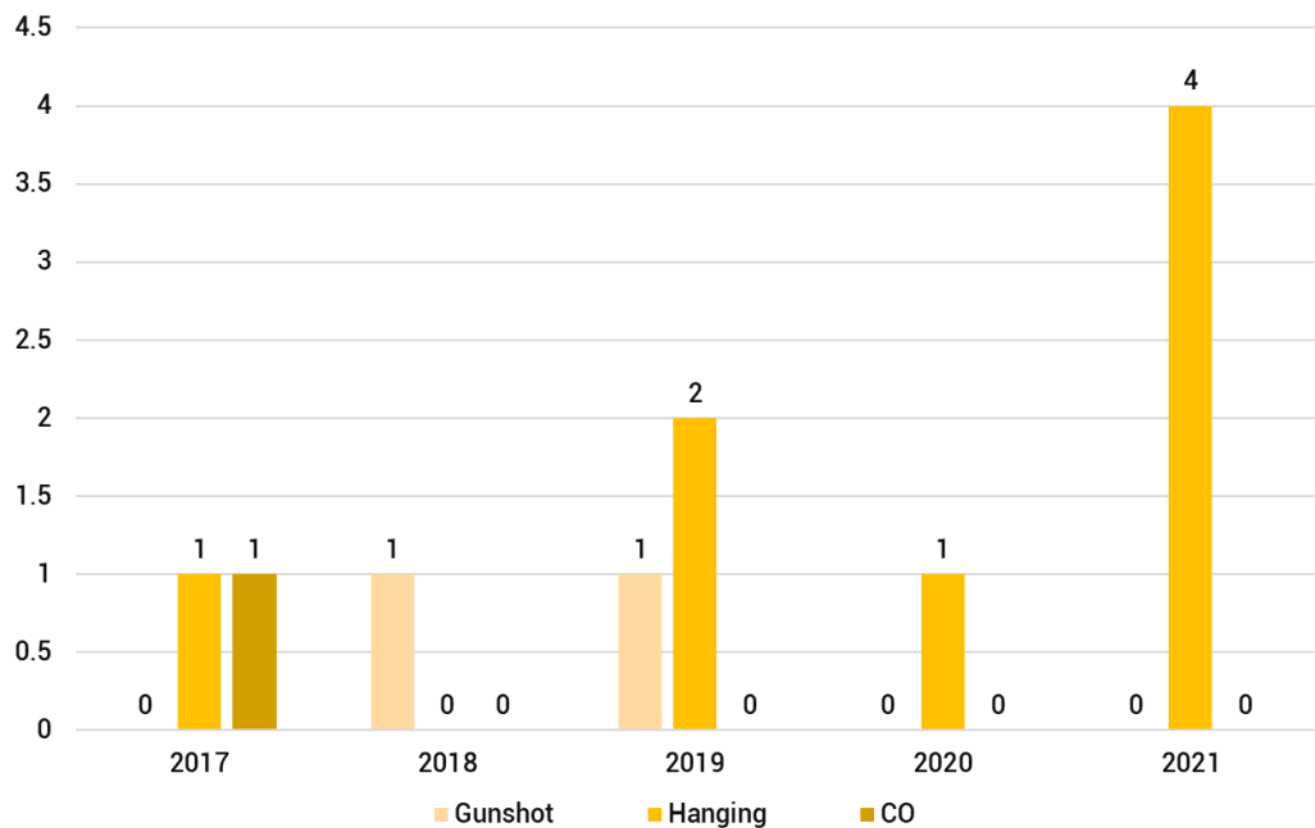
2021 Suicides Distribution by Mechanism



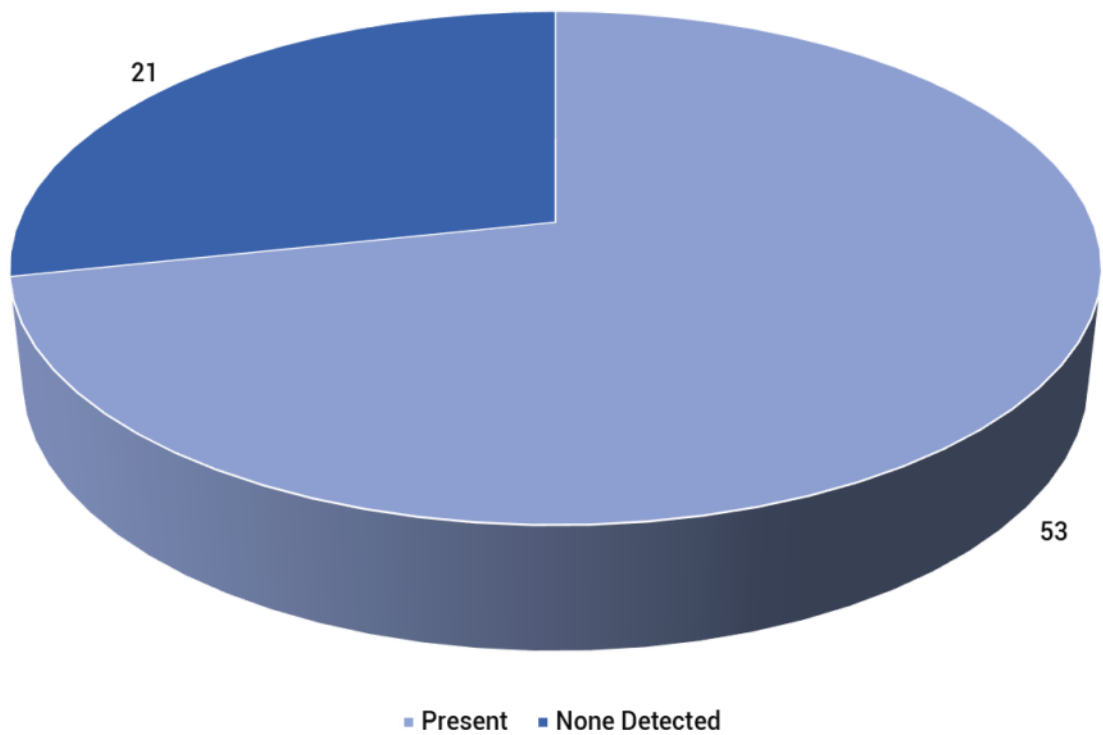
Juvenile (<18) vs. Adult Suicides, 10 Years: 2012 - 2021



Mechanism of Juvenile Suicides—5 Years: 2017 - 2021



Alcohol and/or Drug-Related Suicides 2021

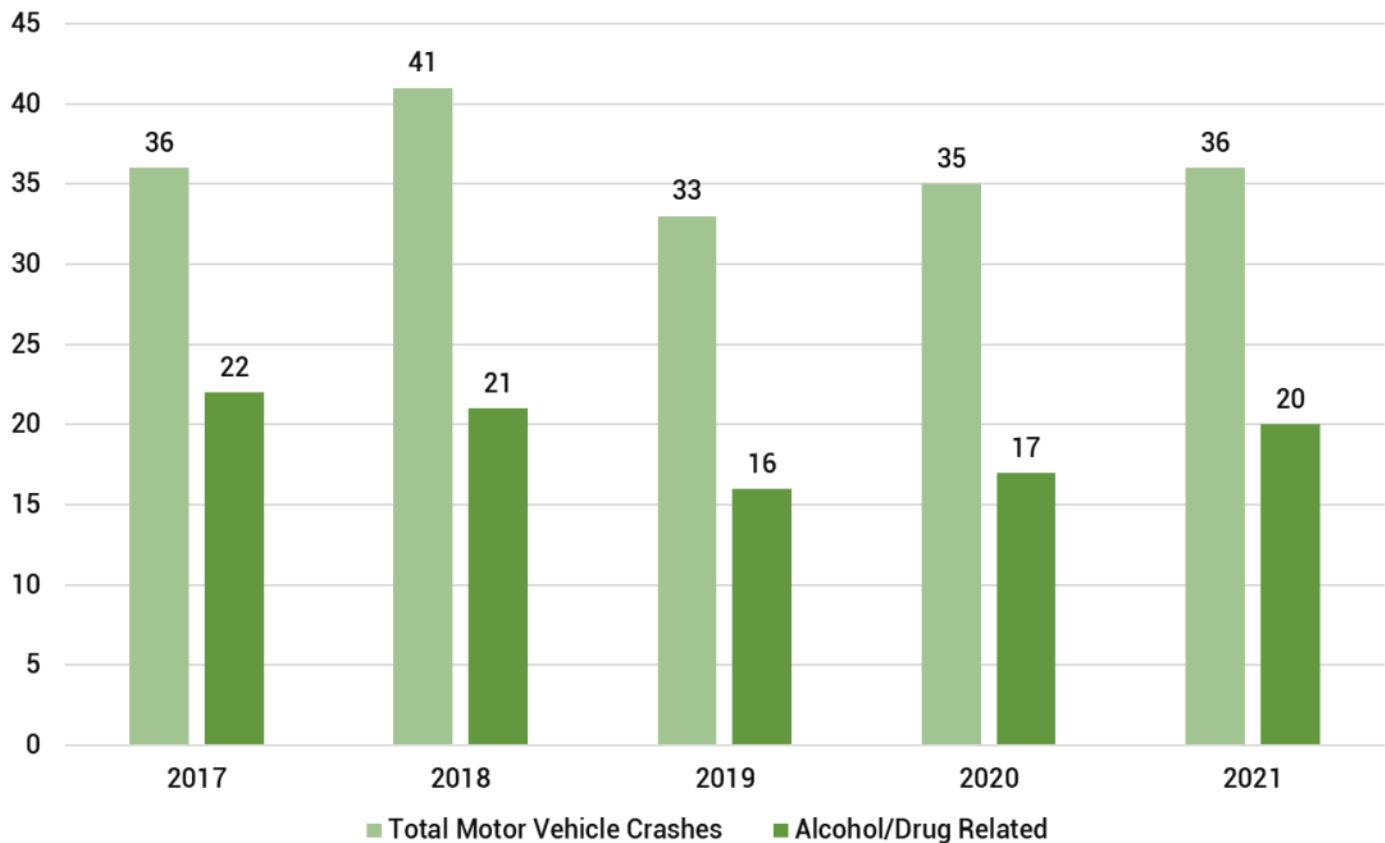


2021 Accident Statistics

Accidental deaths are deaths other than natural where there is no evidence of intent; i.e. an unintentional event or chain of events. This category includes most motor vehicle crashes (MVC), falls, drowning, accidental drug overdoses (OD), choking, etc. During 2021, 207 deaths were certified in Larimer County as accidents.

42 of these deaths were from motor vehicle (or traffic) crashes (MVCs). Our statistical information will deal first with the MVCs. The other 165 accidental deaths will be discussed on page 26.

Alcohol and/or Drug-Related Motor Vehicle Crashes



In 2021, there were 42 motor vehicle fatalities in 36 crashes.

Out of the 36 crashes, 20 (56%) decedents were drivers/pedestrians who were considered to be under the influence of alcohol and/or drugs.

Motor Vehicle Crash Fatalities (35)

Age:

Average Age	38.8
Juveniles (<18)	3
Adults	39
Youngest	0
Oldest	81

Decedent's Position in Vehicle:

Driver	16
Passenger	13
Unknown	0
Pedestrians hit by vehicle.....	4
Bicyclists	9

Safety Measures by Decedents:

Seatbelt used	10
Seatbelt NOT used.....	15
N/A: ATV, scooter, or motorcycle.....	7
N/A: Pedestrians/bicyclists.....	10
Unknown.....	0

Weather Related Adverse Road Conditions:

Snow, Ice, and/or Strong Wind:	3
--------------------------------------	---

Time of Day:

Unknown.....	3
Unknown AM.....	0
Unknown PM.....	0
00:01 - 06:00	2
06:01 - 12:00	6
12:01 - 18:00	9
18:01 - 00:00	16

Number of vehicles involved:

Unknown.....	1
One vehicle only.....	7
Two or more vehicles	10

2021 Accidents (Excluding Motor Vehicle Crashes)

In 2021, Larimer County had 165 accidental deaths that were not traffic-related. They are classified as follows:

Falls	65
Drug-Related	68
Carbon Monoxide	1
Drowning	12
Asphyxia (Mechanical, positional)	6
Asphyxia (Ligature)	1
Hypo/Hyperthermia	2
Fire/Thermal	3
Aircraft	1
Firearm	1
Blunt Force	2
Alcohol	2
Treatment Complication	1

Age:

Average Age	58
Adults	165
Juveniles (<18)	0

Alcohol and/or drugs found in system: 95/165 (58%)

2021 Homicide Information

Homicide is a death that results from injuries intentionally inflicted by another person (explicit or implicit) or inflicted on another by one's grossly reckless behavior. Vehicular homicides are NOT included in this category, as these deaths do not show intent to kill and are hence counted in the Motor Vehicle Crash statistics.

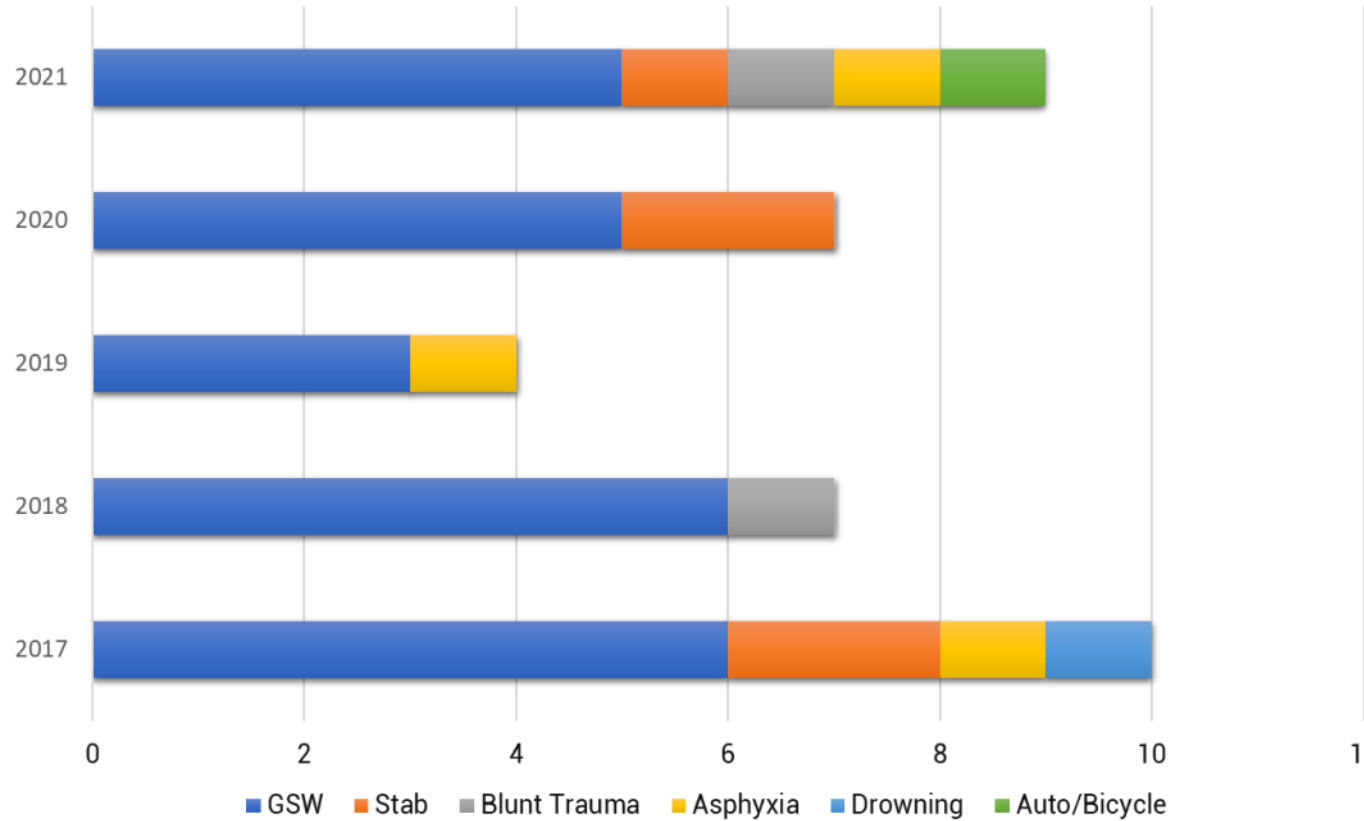
In 2021, there were 9 homicide victims in Larimer County.

AGE	RACE	GENDER
Average Age..... 39	White..... 7	Male..... 6
Adult 8	Hispanic 2	Female..... 3
Juvenile (<18) 1	Mixed/Other 0	

****Alcohol/Drug-Related ****

We do not report on alcohol or drugs in our homicide statistics, as we do not want any positive results to imply fault on the part of the victim. The perpetrator is presumed innocent until proven guilty and is HIPAA-protected.

Homicides – Last 5 Years



Gun Related Deaths in Larimer County

2021 Total County Deaths: 3199

Total Gun Deaths	48	(1.5% of all deaths)
Suicides	40	(40 adults)
Accidents	1	(1 adult)
Homicides	5	(5 adults)
Undetermined	2	(2 adults)

2020 Total County Deaths: 2909

Total Gun Deaths	44	(1.5% of all deaths)
Suicides	39	(39 adults)
Accidents	0	
Homicides	5	(4 adults)
Undetermined	0	

2019 Total County Deaths: 2632

Total Gun Deaths	39	(1.5% of all deaths)
Suicides	36	(36 adults, 1 juvenile)
Accidents	0	
Homicides	3	(3 adults)
Undetermined	0	

2018 Total County Deaths: 2549

Total Gun Deaths	48	(1.9% of all deaths)
Suicides	40	(39 adults, 1 juvenile)
Accidents	2	
Homicides	6	(4 adult, 2 juveniles)
Undetermined	0	

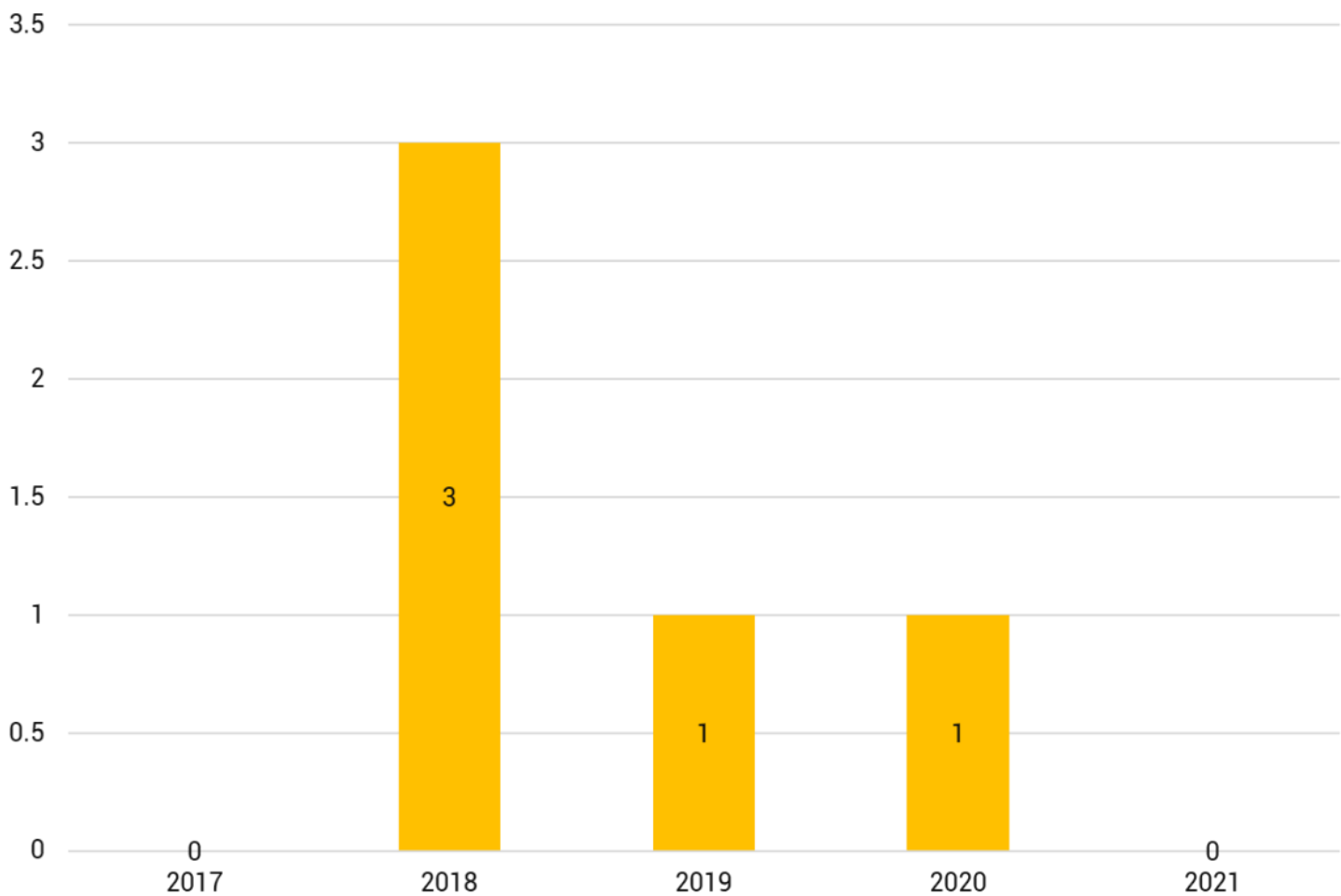
2017 Total County Deaths: 2554

Total Gun Deaths	40	(1.6% of all deaths)
Suicides	33	(33 adults)
Accidents	0	
Homicides	6	(6 adults)
Undetermined	1	(1 adult)

2016 Total County Deaths: 2507

Total Gun Deaths	60	(2.4% of all deaths)
Suicides	54	(52 adults, 2 juvenile)
Accidents	0	
Homicides	6	(5 adults, 1 juvenile)
Undetermined	0	

Juvenile (<18) Deaths From Gunshot Wounds 2017-2021



Guns in the Hands of Juveniles (Juvenile: <18)

Statistics below are to show deaths occurring at the hands of a juvenile with a gun during the last 10 years. They include suicides, accidental shootings resulting in death, and homicides **perpetrated** by a juvenile. They DO NOT include juveniles who are **victims** of homicide.

2021

Suicides: 0
Accidents: 0
Homicides by Juveniles: 0

2020

Suicides: 0
Accidents: 0
Homicides by Juveniles: 0

2019

Suicides: 1
Accidents: 0
Homicides by Juveniles: 0

2018

Suicides: 1
Accidents: 0
Homicides by Juveniles: 0

2017

Suicides: 0
Accidents: 0
Homicides by Juveniles: 0

2016

Suicides: 2
Accidents: 0
Homicides by Juveniles: 0

2015

Suicides: 1
Accidents: 0
Homicides by Juveniles: 0

2014

Suicides: 0
Accidents: 0
Homicides by Juveniles: 0

2013

Suicides: 0
Accidents: 0
Homicides by Juveniles: 0

2012

Suicides: 0
Accidents: 0
Homicides by Juveniles: 0

2011

Suicides: 1
Accidents: 0
Homicides by Juveniles: 0

Drugs of Abuse in Overdose Deaths 2021 (Total: 80)

Accidents (67)	Gender	Age	Drugs of Abuse
1	Female	27	Amphetamine, Methamphetamine
2	Male	37	Methamphetamine, Amphetamine
3	Male	50	Amphetamine, Methamphetamine, Codeine -Free, Morphine-Free, Morphine-Free, 6-Mam - Free
4	Male	19	Amphetamine, Methamphetamine, Fentanyl, Norfentanyl
5	Male	31	4-Anpp, Caffeine, Clonazepam, 7-Amino Clonazepam, Sertraline, Desmethylsertraline, 11-Hydroxy Delta-9 THC, Delta-9 Carboxy THC, Delta-9 THC, Mirtazapine, Fentanyl, Norfentanyl, Mitragynine
6	Male	34	1,1 Difluoroethane
7	Male	46	Amphetamine, Methamphetamine, Delta-9 Carboxy THC, Delta-9 THC, Fentanyl, Norfentanyl
8	Male	30	Bromazolam, Ethanol, Blood Alcohol Concentration (Bac), Caffeine, Naloxone, Diazepam, Nordiazepam, Olanzapine, Gabapentin, Delta-9 THC, Buprenorphine-Free, Norbuprenorphine-Free
9	Male	57	Ethanol, Amphetamine, Methamphetamine, Delta-9 Carboxy THC, Delta-9 THC, Fentanyl, Norfentanyl
10	Male	29	Fentanyl, Norfentanyl, Ethanol, Blood Alcohol Concentration (Bac)
11	Male	38	Bromazolam, 4-Anpp, Caffeine, Cotinine, Sertraline, Desmethylsertraline, Fentanyl, Norfentanyl, Mitragynine
12	Male	53	Amphetamine, Methamphetamine, Nordiazepam, Fentanyl, Norfentanyl
13	Male	49	Amlodipine, Cotinine, Naloxone, Sertraline, Desmethylsertraline, Gabapentin, Trazodone, Buprenorphine-Free, Norbuprenorphine-Free, Diphenhydramine, Cyclobenzaprine, Pseudoephedrine, Norpseudoephedrine
14	Male	40	Ethanol, 4-Anpp, Continine, 7-Amino Clonazepam, Oxycodone-Free, Oxymorphone-Free, 11-Hydroxy Delta-9 THC, Delta-9 Carboxy THC, Delta-9 THC, Cyclobenzaprine, Fentanyl, Norfentanyl, Mitragynine
15	Male	37	Methamphetamine, Cocaine
16	Male	24	Buprenorphine-Free, Norbuprenorphine-Free, Fentanyl, Norfentanyl
17	Male	42	4-Anpp, Naloxone, Diazepam, Nordiazepam, 7-Amino Clonazepam, Alprazolam, Morphine-Free, Amphetamine, Methamphetamine, Fentanyl, Norfentanyl
18	Male	59	Ethanol, Oxycodone-Free, Oxymorphone-Free
19	Male	33	Ethanol, Amphetamine, Delta-9 Carboxy THC, Delta-9 THC, Fentanyl, Norfentanyl, Cannabinoids, Amphetamine, Fentanyl Metabolite
20	Female	52	Ethanol
21	Male	26	Methamphetamine, Cocaine

Drugs of Abuse in Overdose Deaths 2021 (Total: 80)

Accidents (67)	Gender	Age	Drugs of Abuse
22	Male	42	4-Anpp, Amlodipine, Cotinine, 7-Amino Clonazepam, Bupropion, Hydroxybupropion, Fentanyl, Norfentanyl
23	Female	41	, Naloxone, Alprazolam, Bupropion, Hydroxybupropion, Lamotrigine, Zolpidem, Nortriptyline, Promethazine, Fentanyl, Norfentanyl
24	Male	61	Amphetamine, Methamphetamine, Codeine -Free, Morphine-Free, 6-Monoacetylmorphine - Free
25	Male	61	Amphetamine, Methamphetamine, Delta-9 Carboxy THC
26	Male	51	Ethanol, Cocaine, Benzoylcegonine, Delta-9 THC
27	Male	52	Cotinine, Naloxone, Amphetamine, Methamphetamine
28	Female	49	Ethanol, Diazepam, Nordiazepam, Oxycodone-Free, Norbuprenorphine-Free
29	Male	18	Oxycodone-Free, 11-Hydroxy Delta-9 THC, Delta-9 Carboxy THC, Delta-9 THC, Fentanyl
30	Female	39	Alprazolam, Oxycodone-Free, Oxymorphone-Free, 11-Hydroxy Delta-9 THC, Delta-9 Carboxy THC, Delta-9 THC, Fentanyl, Norfentanyl
31	Female	39	Oxycodone-Free, Oxymorphone-Free, Delta-9 Carboxy THC, Delta-9 THC, Fentanyl, Norfentanyl
32	Male	32	Ethanol, Codeine -Free, Morphine-Free, 6-Monoacetylmorphine - Free, Opiates
33	Male	27	Oxycodone-Free, Fentanyl, Opiates, Oxycodone / Oxymorphone, Fentanyl Metabolite
34	Male	31	Amphetamine, Methamphetamine, Methadone, Eddp, Morphine-Free, Buprenorphine-Free, Norbuprenorphine-Free, Delta-9 Carboxy THC, Delta-9 THC, Fentanyl, Norfentanyl, Morphine-Free
35	Male	34	Amphetamine, Methamphetamine, Delta-9 Carboxy THC, Fentanyl, Norfentanyl, Cannabinoids, Amphetamine, Fentanyl Metabolite
36	Male	50	Caffeine, Butalbital, Bupropion, Hydroxybupropion, Citalopram / Escitalopram, Fentanyl, Norfentanyl
37	Female	25	Fentanyl, Norfentanyl, Fentanyl Metabolite
38	Female	62	Amphetamine, Methamphetamine, Methadone, Eddp
39	Male	36	THC, Amphetamine, Benzodiazepines
40	Male	39	Amphetamine, Methamphetamine, Diazepam, Nordiazepam, Codeine - Free, Morphine-Free, 6-Monoacetylmorphine - Free, Fentanyl
41	Male	69	Oxycodone-Free, Oxymorphone-Free, Fentanyl, Norfentanyl
42	Male	41	Ethanol, Diazepam, Nordiazepam, Delta-9 Carboxy THC, Fentanyl

Drugs of Abuse in Overdose Deaths 2021 (Total: 80)

Accidents (67)	Gender	Age	Drugs of Abuse
43	Male	44	Amphetamine, Methamphetamine, Fentanyl, Norfentanyl
44	Female	42	Methadone, Eddp, Delta-9 Carboxy THC, Delta-9 THC
45	Male	26	Amphetamine, Methamphetamine, Fentanyl, Norfentanyl, Amphetamine, Fentanyl Metabolite
46	Male	71	Amphetamine, Methamphetamine, Delta-9 THC
47	Female	36	Morphine-Free, Fentanyl, Norfentanyl, Opiates, Benzodiazepines, Fentanyl Metabolite
48	Male	38	Amphetamine, Methamphetamine, Codeine -Free, Morphine-Free, Morphine -Free, 6-Monoacetylmorphine - Free
49	Male	35	Benzoyllecgonine, Cocaine, Codeine -Free, Morphine-Free, 11-Hydroxy Delta -9 THC, Delta-9 Carboxy THC, Delta-9 THC, Fentanyl, Opiates, Cocaine And Metabolite, Benzodiazepines, Cannabinoids, Fentanyl Metabolite, 6-Monoacetylmorphine - Free
50	Female	39	Ethanol, Amphetamine, Methamphetamine, Fentanyl
51	Male	21	Mitragynine, Benzoyllecgonine, Fentanyl, Norfentanyl
52	Male	31	11-Hydroxy Delta-9 THC, Delta-9 Carboxy THC, Delta-9 THC, Fentanyl, Opiates, Cannabinoids, Fentanyl Metabolite
53	Female	32	4-Anpp, Cotinine, Venlafaxine, O-Desmethylvenlafaxine, Gabapentin, Fentanyl, Norfentanyl
54	Female	57	Volatiles, 1,1-Difluoroethane, Delta-9 Carboxy THC, Delta-9 THC
55	Male	49	Amphetamine, Methamphetamine, Lorazepam, Delta-9 Carboxy THC
56	Male	55	Ethanol, Diazepam, Nordiazepam, Benzoyllecgonine, Codeine - Free, Morphine - Free, 6-Monoacetylmorphine - Free, Oxycodone - Free, Opiates, Cocaine / Metabolites, Benzodiazepines, Cannabinoids, Oxycodone / Oxymorphone
57	Male	31	Ethanol, Benzoyllecgonine, Cocaine, Cocaethylene, Fentanyl, Norfentanyl
58	Female	53	Amphetamine, Methamphetamine, Fentanyl, Norfentanyl
59	Male	31	Fentanyl, Norfentanyl
60	Male	33	Amphetamine, Methamphetamine, Diazepam, Nordiazepam, Oxazepam, Temazepam, Fentanyl, Norfentanyl
61	Male	53	Benzoyllecgonine, Cocaine, Delta-9 Carboxy THC, Delta-9 THC
62	Male	22	Metoprolol, O-Desmethyltramadol, 11-Hydroxy Delta-9 THC, Delta-9 Carboxy THC, Nicotine, Delta-9 Carboxy THC, O-Desmethyltramadol, Diphenhydramine

Drugs of Abuse in Overdose Deaths 2021 (Total: 80)

Accidents (67)	Gender	Age	Drugs of Abuse
63	Male	56	Alprazolam, Methadone, Eddp, Oxycodone-Free
64	Male	48	Benzoyllecgonine, Cocaine, Codeine -Free, Morphine-Free, Fentanyl, Norfentanyl
65	Male	32	Ethanol, Delta-9 Carboxy THC, Delta-9 THC, Fentanyl, Norfentanyl,
66	Female	62	Fentanyl, Norfentanyl
67	Male	43	Amphetamine, Methamphetamine, Fentanyl, Norfentanyl
Of the 67 overdose deaths declared Accidents 38 contained Fentanyl in the toxicology results.			
Suicide (11)	Gender	Age	Drugs of Abuse
1	Male	57	Metoprolol, Tramadol, O-Desmethyltramadol, Nicotine, Cotinine
2	Male	46	Ethanol, Delta-9 THC, Diphenhydramine
3	Female	33	Ethanol, Cotinine, Naloxone, Citalopram / Escitalopram
4	Female	49	Lithium, Acetaminophen, Hydromorphone - Free, Doxepin, Norfluoxetine, Fluoxetine, 6-Beta-Naltrexol - Free
5	Male	57	Diphenhydramine
6	Male	51	Diphenhydramine, Ethanol, Norbuprenorphine-Free, Delta-9 THC
7	Male	58	Cotinine, Amphetamine, Bupropion, Hydroxybupropion, Sertraline, Desmethylsertraline, Doxylamine, Mcpp, Trazodone
8	Female	58	Ethanol, Bupropion, Hydroxybupropion, Methylphenidate, Ritalinic Acid, Citalopram / Escitalopram, Amphetamine
9	Female	18	Diphenhydramine
10	Male	79	Oxycodone, Oxymorphone-Free
11	Female	64	Amphetamine, Methamphetamine, Oxycodone / Oxymorphone, Oxymorphone-Free
Undetermined (2)	Gender	Age	Drugs of Abuse
1	Female	53	Fentanyl, Norfentanyl, Fentanyl Metabolite
2	Female	55	Acetaminophen, Diazepam, Lorazepam, Dihydrocodeine / Hydrocodol - Free, Hydrocodone - Free, Hydromorphone - Free, Oxycodone-Free, Oxymorphone-Free

Child Deaths by Age, Manner, and Mode

Last 5 years - < 18 years of age

***2021 will begin including non-coroner deaths which will make the numbers appear higher.**

2021 (42 Total)*	Natural	Accident	Suicide	Homicide	SUIDS & Other Undetermined
Fetal demise up to < 1 mo	31	1			
1 mo < 1 yr	1				
1 yr < 4 yrs		1		1	
4 yrs < 9 yrs		1			
9 yrs < 14 yrs	2		1		
14 yrs < 18 yrs			3		
TOTALS	34	3	4	1	0
2020 (11 Total)	Natural	Accident	Suicide	Homicide	SUIDS & Other Undetermined
Fetal demise up to < 1 mo	6				1 – Unknown
1 mo < 1 yr	1	1			1 – Unknown
1 yr < 4 yrs				1	
4 yrs < 9 yrs					
9 yrs < 14 yrs					
14 yrs < 18 yrs					
TOTALS	7	1	0	1	2
2019 (16 Total)	Natural	Accident	Suicide	Homicide	SUIDS & Other Undetermined
Fetal demise up to < 1 mo	1				1 – Unknown
1 mo < 1 yr	3	3			1 – SUIDS vs Hypoxic Encephalopathy
1 yr < 4 yrs		1			
4 yrs < 9 yrs	1	1			
9 yrs < 14 yrs			2		1 – Possible Accident
14 yrs < 18 yrs			1		
TOTALS	5	5	3	0	3

Child Deaths by Age, Manner, and Mode

Last 5 years - < 18 years of age

2018 (18 Total)	Natural	Accident	Suicide	Homicide	SUIDS & Other Undetermined
Fetal demise up to < 1 mo	5				
1 mo < 1 yr		1 – Co-Sleep/ Overlay			1 - SUID
1 yr < 4 yrs					
4 yrs < 9 yrs		1 – MVC			
9 yrs < 14 yrs	1	1 – Bike vs Object 1 – MV vs Ped	1 – GSW		
14 yrs < 18 yrs	1	1 – Drowning		2 – GSW	
TOTALS	7	7	1	2	1
2017 (19 Total)	Natural	Accident	Suicide	Homicide	SUIDS & Other Undetermined
Fetal demise up to < 1 mo	2				
1 mo < 1 yr		1 – Co-Sleep/ Overlay		1 – Smothering	1 – SUID
1 yr < 4 yrs	2	1 – Drowning			1 – SUID vs Vaccine Reaction
4 yrs < 9 yrs	1	1 – Drowning			
9 yrs < 14 yrs	1				
14 yrs < 18 yrs	1	1 – OD 2 – MVC	1 – Hanging 1 – CO		
TOTALS	5	5	3	1	3

Unidentified Remains

The Larimer County Medical Examiner's Office currently has four (4) deceased individuals or remains who are unidentified. These cases are described below, oldest to most recent.

1. Unidentified Hispanic Male: Date of Death: 09/16/94

Approximate Age: 25-35

Height: 5'10"

Weight: 140 lbs.

Hair: Black, wavy, medium length

Eye Color: Brown

Scars/ Tattoos: Well-healed, old traumatic scars on right lower back and right back hip.

Clothing: Blue nylon windbreaker with logo "ATA Services, Mile High Stadium"; gray/ white plaid shirt; red long-sleeved sweatshirt; khaki trousers; black/ white canvas and vinyl athletic shoes. A religious pamphlet was found in a pocket from the Jeremiah Baptist Church, Denver.

Dental: Two silver caps on upper front incisors

This Hispanic male was apparently living a transient lifestyle. He was found deceased in the boxcar of a train in a railroad yard in north Ft. Collins. He had sustained massive blunt force injuries to the head, consistent with being caught in the slamming door of the boxcar of an abruptly stopping train. The manner of death appears to be accidental. The train in which he was found arrived in Denver from New Mexico on 09/15/94 and was forwarded on to Ft. Collins at 02:00, 09/16/94.

2. Unidentified Caucasian Male: Date of Death: Approximately 07/06/97

Approximate Age: 20-30

Height: 5'11"

Weight: 150 – 170 lbs.

Hair: Sandy Brown, long, wavy; receding hairline; chin beard or goatee

Eye Color: Unknown

Teeth: Beautiful, straight, white, no fillings; All 4 wisdom teeth present; slight gap between top front incisors.

Scars/ Tattoos: Small, circular tattoo on left thumb with the letters: P.I.L.; both ears pierced one time; well manicured fingernails.

Clothing: Black tee shirt with bright pink motorcross logo "Sprucewood Express"; long-sleeved striped shirt; Rustler brand blue jeans; black leather work boots.



This man was found deceased in north Fort Collins in the sleeper cab of an abandoned semi tractor-trailer. He was probably living a recently transient lifestyle. There is no evidence of trauma or foul play. There is no natural disease process apparent at autopsy. The manner of death is undetermined.

3. Unidentified African American Female: Date of Death: 07/11/11



Approximate Age: Approximately 60 (55 – 70)

Height: 5'6"

Weight: 211 lbs.

Hair: Gray/ black with more white

around forehead/ face; curly

Eye Color: Brown

Scars/ Tattoos: Round scar beneath chin; scar on lower abdomen (possible past C-section)

Clothing: Black paisley patterned blouse; black pants

Dental: Natural w/ partial upper denture

Jewelry: White metal chain necklace; white metal earrings; white metal wristwatch

This middle-aged African American female checked in to a local motel on 06/27/11 and arrived there by taxi. She paid for a room in cash through 07/11/11. It was later found that she had stayed at other local motels in the area, always taking a taxi, paying in cash, and giving false and different names. She told the Motel 9 that her name was Sandra Nelson, of 5203 Bosa Ave., Park City, UT. This was later found to be a non-existent address and false name. She also stated that she was originally from Los Angeles and was looking for a house in this area. On 07/11/11, she did not show up for breakfast as

had been her custom. Since it was her last paid day, staff assumed she had checked out. They entered her room with a master key and found her deceased on the bed with pills at her feet and a bright blue, granular purging coming from her nose and mouth. There was no suicide note but autopsy results showed a massive overdose of multiple medications. All attempts to identify the decedent have failed.

4. Unidentified Native American Remains: Date of Report: 10/10/18

The Department of Natural Resources at Colorado State University (CSU) reached out to the Coroner's Office a possible gravesite with visible bones that were found in the Red Mountain Open Space, in an area recently purchased by Larimer County. The bones were known and reported to the county by the previous landowner who believed them to be Native American. CSU Archaeologists then worked in tandem with the state, as well as the Larimer County Coroner's Office to document and determine the forensic or historic nature of the site. There were no visible historic artifacts, clothing or tissues around the bones. All offices involved agreed the site was not of recent forensic value and believed the site to be Native American. Arrangements were made with local tribal officials and it was decided to leave the bones in place as they are not near any public recreational areas. The site was documented with our Office, Larimer County Parks, CSU and the CO State Archaeologist records for future reference.

If you have any information concerning any of the above individuals, please contact the Larimer County Medical Examiner's Office at 970-498-6161. You can remain anonymous.

You can also e-mail us at: larimercoroner@larimer.org

Public Administrator Cases

No Next-of-Kin Found at Time of Release

We are publishing this list in an effort to help families find their loved ones, if possible.
 If anyone has any information regarding next-of-kin on any of the decedents listed,
 please contact our Office at 970-498-6161 or the appropriate Funeral Home.
 You may also email: larimercoroner@larimer.org. You may remain anonymous.

NAME	Date of Death	AGE	MANNER	LCCO#	Funeral Home
<u>1997</u>					
Un-ID'd White male	07/06/1997	N/A	Undetermined	97C-337	Allnutt-FTC (Reager's)
<u>2004</u>					
SMITH, James	07/01/2004	41	Accident (MVC)	04C-368	Bohlender
<u>2006</u>					
MCCLENNY, "Jack"	01/07/2006	80	Natural	06C-021	Allnutt- FTC
<u>2008</u>					
TOWNES, Sterling	10/03/2008	45	Natural	08C-676	Kibbey's
ELLSWORTH, Hawk	11/20/2008	58	Accident (Fall)	08C-814	Goes (sister?)
<u>2009</u>					
YODER, Karl	09/27/2009	58	Accident (Burn)	09C-678	Viegut
DORSEY, Robert	12/14/2009	65	Natural	09C-879	Vessey
<u>2011</u>					
Un-ID'd Black female	07/11/2011	Approx 60's	Suicide (OD)	11C-558	Bohlender
DAVIS, Herbert	09/12/2011	65	Natural	11C-748	Viegut
<u>2012</u>					
ROBISON, Randy K. (aka MILLER)	01/29/2012	50	Suicide (Cutting)	12C-097	Allnutt- FTC
MULLANEY, John F.	03/08/2012	56	Accident (Fall)	12C-214	Bohlender
FROST, Jack	09/26/2012	48	Suicide (Train)	12C-769	Allnutt- FTC
JACKSON, Duane	09/20/2012	67	Natural	12C-786	Allnutt- FTC
EASTBURN, Carl B.	09/27/2012	74	Suicide (GSW)	12C- 792	Kibbey's
<u>2013</u>					
TROUT, Gary	11/22/2013	66	Natural	13C-1053	Allnutt-Lvld
<u>2014</u>					
PALMER, Terry (aka: Terry VCLICK)	05/23/2014	64	Natural	14C-452	Bohlender

Public Administrator Cases

No Next-of-Kin Found at Time of Release

NAME	Date of Death	AGE	MANNER	LCCO#	Funeral Home
------	---------------	-----	--------	-------	--------------

2015

GIDEON, Michael	08/23/2015	64	Natural	15C-849	Goes
-----------------	------------	----	---------	---------	------

2016

LONGHIBLER, Spencer	06/28/2016	63	Accident	16C-564	Allnutt-FTC
CONDON, Brian	08/20/2016	55	Suicide	16C-780	Allnutt-Lvld
KAPLAN, Joel	09/13/2016	59	Natural	16C-846	Viegut

2017

MUTTER, Kathy A.	02/13/2017	51	Natural	17C-166	Vessey
GARNER, Joel	10/02/2017	54	Accident	17C-914	Bohlender

2018

GAWRLYCZIK, Richard	02/24/2018	68	Natural	18CC0216	Bohlender
MARTINEZ, Ronald C.	03/01/2018	66	Natural	18CC0270	Bohlender
BLACKWELL, Phillip R.	08/25/2018	68	Suicide	18CC0820	Allnutt-FTC

2019

WEST, Kelly James	12/31/2018	53	Natural	19CC0015	Allnutt-FTC
DIAMOND, Thomas R.	01/20/2019	80	Natural	19CC0087	Allnutt-FTC
BECKEL, Melvin	06/17/2019	53	Natural	19CC0616	Viegut
HOOVER, Michael J.	08/12/2019	65	Natural	19CC0842	Allnutt-Lvld
SOMMERS, Harold L.	04/12/2019	60	Natural	19CC0409	Goes

2020

MAZIK, Lee	12/23/2019	58	Natural	20CC0011	Allnutt-FTC
BAIRD, Dwight	01/21/2020	58	Natural	20CC0087	Northern CO Crematory
SAMORA, Anthony	04/09/2020	60	Natural	20CC0400	Goes
SPARKS, James	04/25/2020	73	Natural	20CC0541	Allnutt-EP

2021

DECKER, Donald E.	01/11/2021	63	Accident	21CC0050	Kibbey
PRIOR, Nancy	07/19/2021	75	Natural	21CC0982	Vessey

EXHUMATIONS

NAME	Date of Death	AGE	MANNER	LCCO#	Date Exhumed
------	---------------	-----	--------	-------	--------------

HETRICK, Peggy L.	02/11/1987	37	Homicide	87C-049	05/14/1998
DECKER, Donald J.	07/06/2008	22	Undetermined	08C-459	03/15/2011

Organ and Tissue Donation

There are six (6) hospitals within the borders of Larimer County: UCHealth Poudre Valley Hospital in Ft. Collins, UCHealth at Medical Center of the Rockies in Loveland, Banner Health Center - Ft. Collins Campus, Banner Health at McKee Medical Center in Loveland, Estes Park Medical Center in Estes Park, and Northern Colorado Rehabilitation Hospital in northern Johnstown. Nearly all organ and tissue donation referrals take place in the hospital setting. It is the policy of the Larimer County Medical Examiner's Office to facilitate organ and tissue donation in as many cases as possible without compromising the integrity of the investigation.

When referrals are made to harvesting banks, this does not mean that donation automatically takes place. Donations may not occur due to a variety of reasons: Families may not wish to donate; Organ and Tissue Banks may rule out the donation due to the age of the donor, extended postmortem intervals, disease process, or substance use; and on rare occasions our Office, the District Attorney, or law enforcement may not wish to allow donation to occur, or may place certain restrictions on a donation, for investigative or legal reasons. This is usually in cases of homicide or suspected homicide, and infant deaths where organ and/or tissue retrieval could interfere with autopsy findings and compromise a criminal investigation.

Since the majority of hospital deaths do not fall under the Medical Examiner's jurisdiction, our Office is not involved with all donation requests. Therefore, the most accurate and up-to-date donation statistics are available on the Donor Alliance and Rocky Mountain Lions Eye Bank websites: www.donoralliance.org; <https://corneas.org/>.

Budget

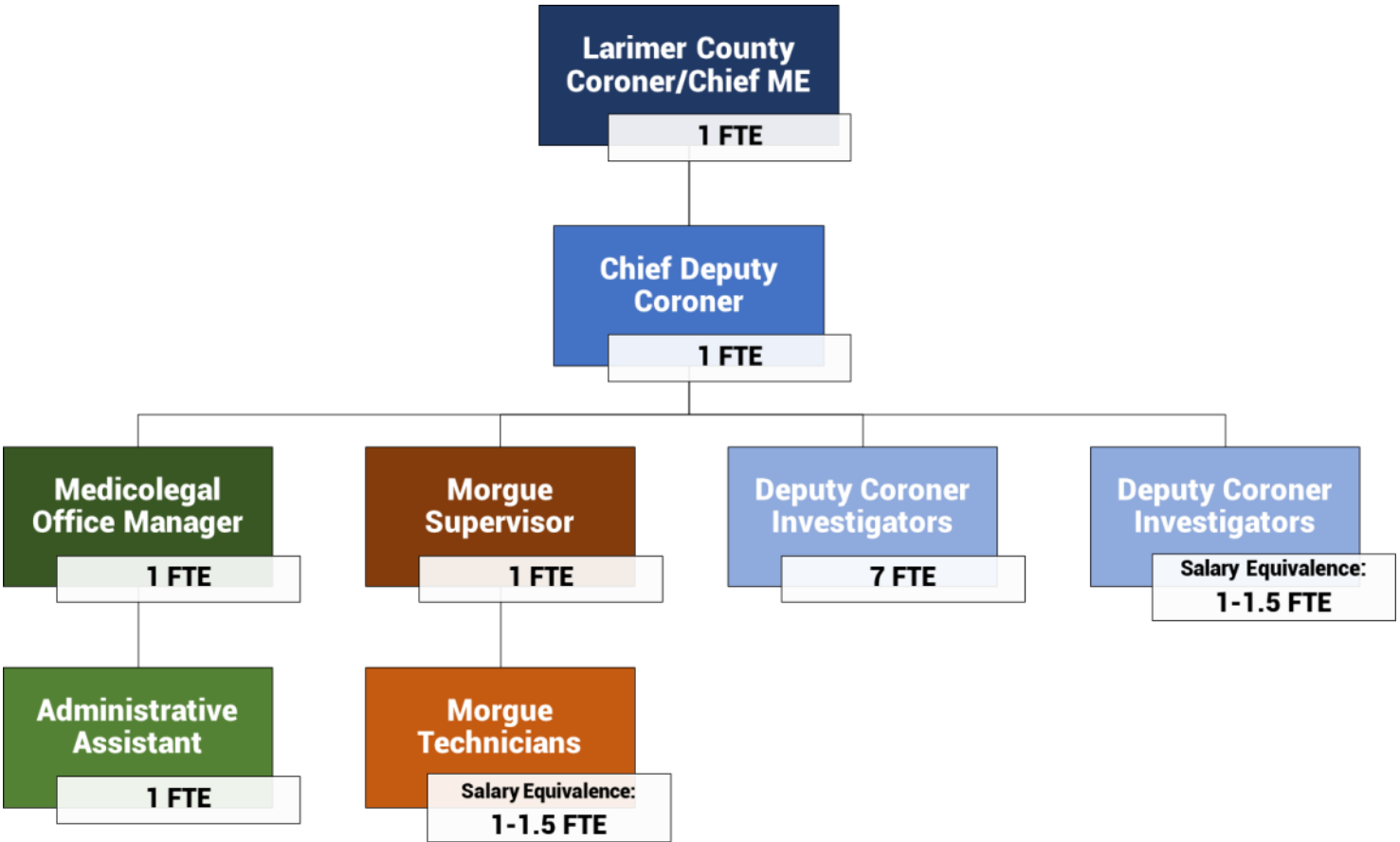
The Larimer County Coroner/Medical Examiner's Office duties are mandated by Colorado Statute and the office is funded through the Larimer County Commissioners by the citizens of Larimer County. Staff salaries are set by the County and salaries follow the standard merit and yearly cost-of-living raises that are the same across all County departments. Since the Medicolegal Investigators are considered law enforcement, the salaries coincide with other law enforcement salaries.

As the population of Larimer County increases, so must our budget. At least two Investigators must be "on call" at all times and we occasionally need to call out a third and a fourth. Due to television and other media, the public has come to expect a thorough, professional, timely investigation and autopsy when a death occurs. We strive to provide the best investigation and public service possible.

All County budgets are Public Record and Larimer County's be accessed through the County website, [**www.larimer.org/budget**](http://www.larimer.org/budget).



2021 Larimer County Coroner's Office Organizational Chart



Total FTE's = 12 plus Temporary Investigators and Morgue Technicians

