

2021 VALUE CHANGE - SOUTHERN LARIMER COUNTY

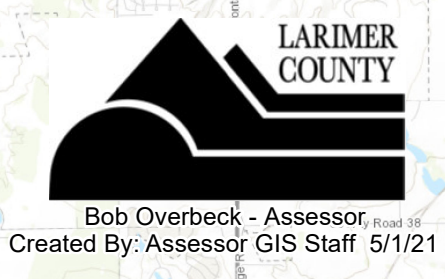
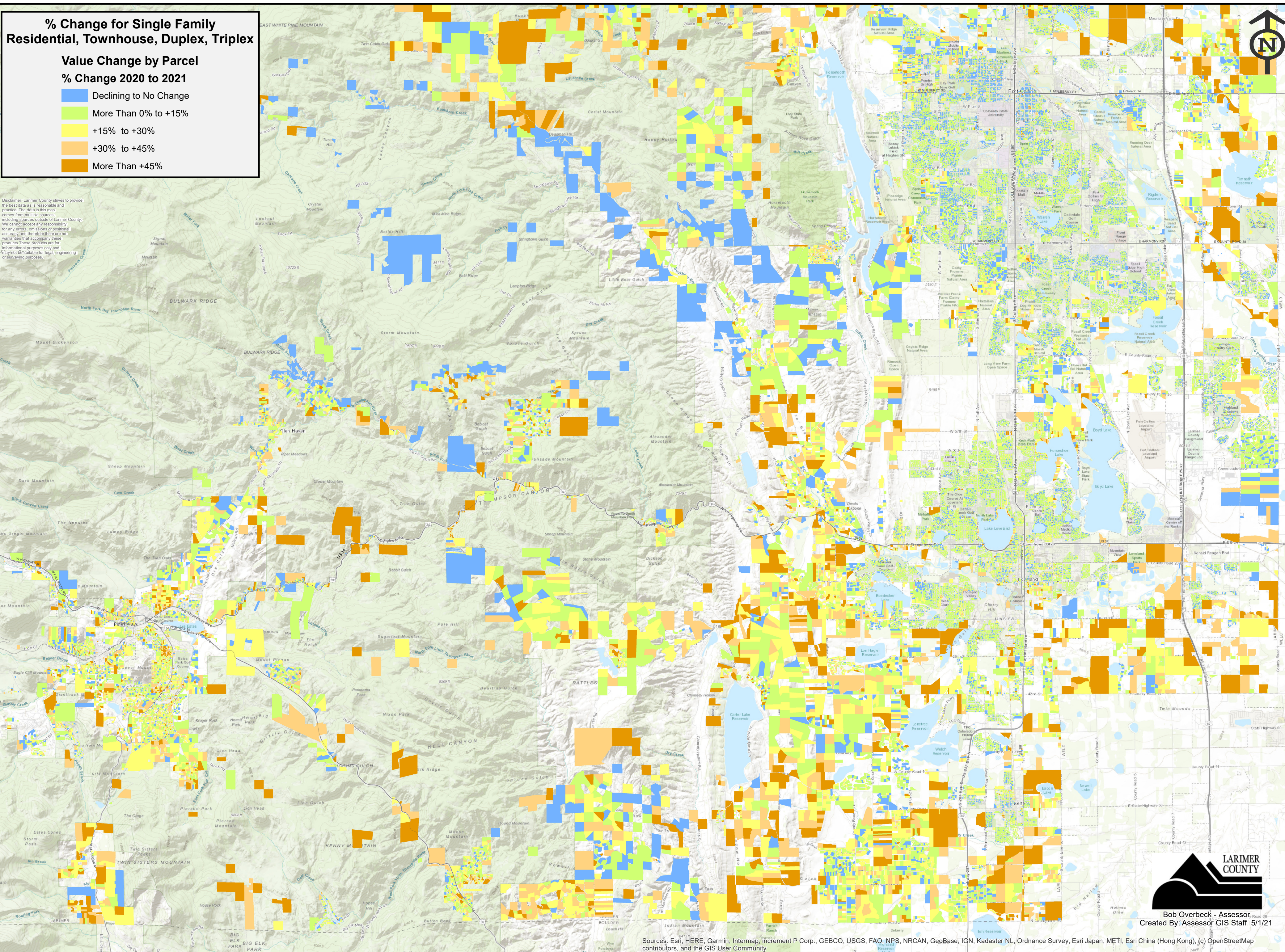
% Change for Single Family Residential, Townhouse, Duplex, Triplex

Value Change by Parcel

% Change 2020 to 2021

- Declining to No Change
- More Than 0% to +15%
- +15% to +30%
- +30% to +45%
- More Than +45%

Disclaimer: Larimer County strives to provide the best data as is reasonable and practical. The data in the map comes from multiple sources, including sources outside of Larimer County. We cannot accept any responsibility for any errors, omissions or positional accuracy and therefore there are no warranties that accompany these products. These products are for informational purposes only and shall not be suitable for legal, engineering or surveying purposes.



Bob Overbeck - Assessor
Created By: Assessor GIS Staff 5/1/21

Sources: Esri, HERE, Garmin, Intermap, increment P Corp., GEBCO, USGS, FAO, NPS, NRCAN, GeoBase, IGN, Kadaster NL, Ordnance Survey, Esri Japan, METI, Esri China (Hong Kong), (c) OpenStreetMap contributors, and the GIS User Community