

LARIMER COUNTY

2024

BUDGET

[BRIEF]

Larimer County's 2024 proposed net operating budget is \$400 million. The total proposed budget, with non-operational governmental accounts, capital projects and disaster recovery costs is \$610 million.

LARIMER COUNTY BOARD OF COUNTY COMMISSIONERS



(From left) **Jody Shadduck-McNally**, District 3 ;
John Kefalas, District 1; **Kristin Stephens**, District 2

COMMISSIONERS MESSAGE

The Larimer County Board of Commissioners and our staff have worked hard to craft a budget that responds to increasing demand for services, legislative uncertainty, disaster recovery, takes account of uncertain economic conditions, and invests in capital projects that will enhance social equity in the community and offer better essential services to our residents, even more effectively.

LARIMER COUNTY ELECTED OFFICIALS



Bob Overbeck
Assessor



Tina Harris
Clerk &
Recorder



Stephen Hanks
Coroner



Gordon McLaughlin
District Attorney



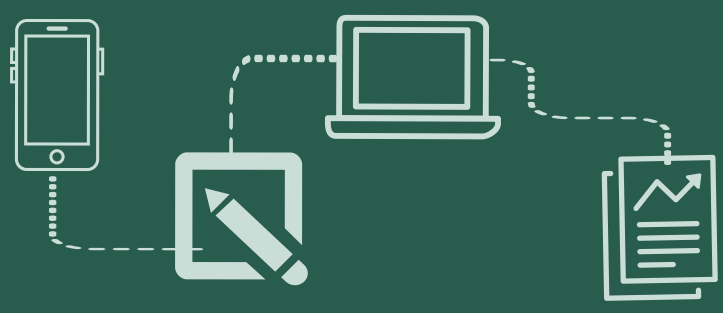
John Feyen
Sheriff



Tom Donnelly
Surveyor

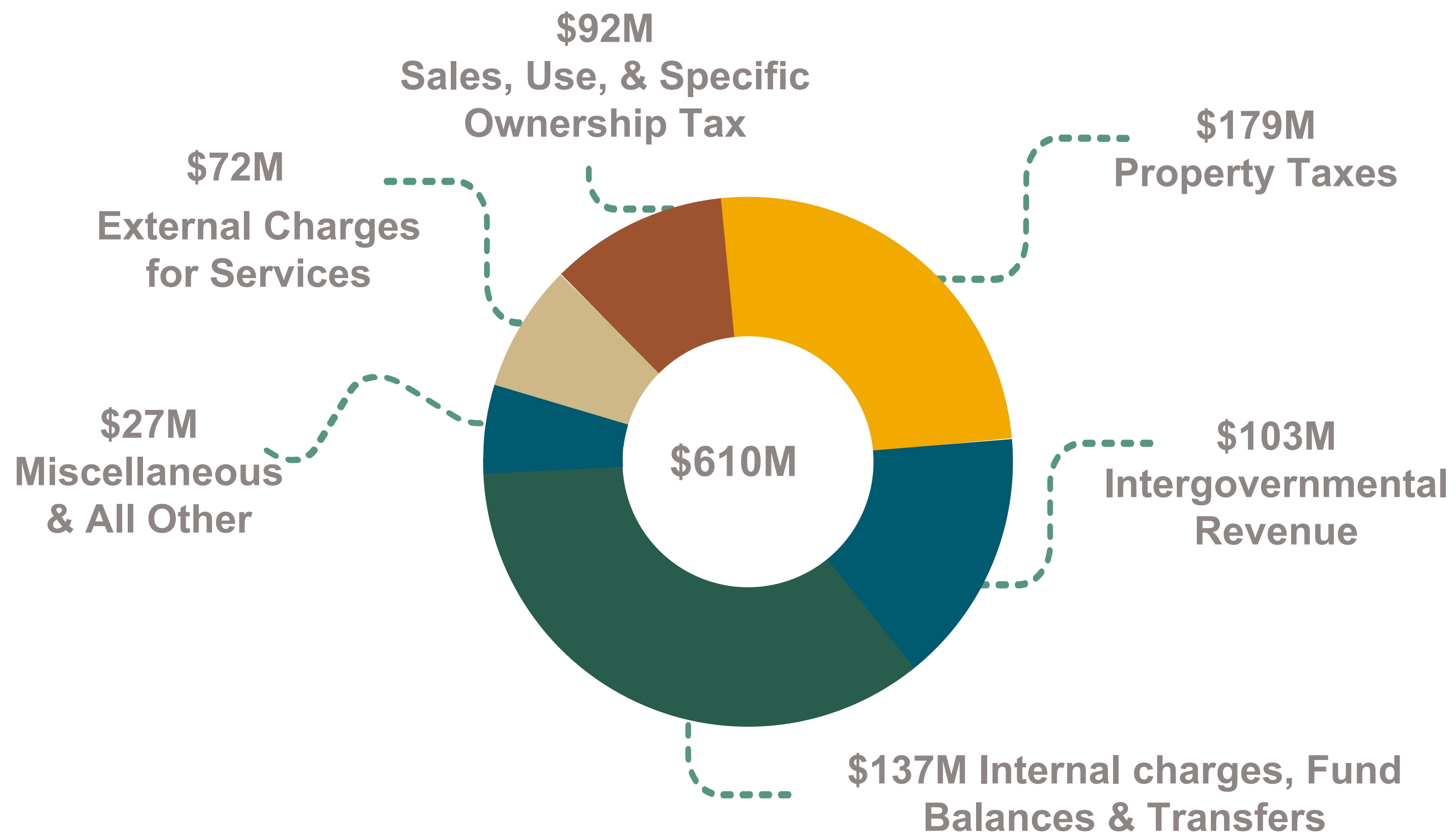


Irene Josey
Treasurer

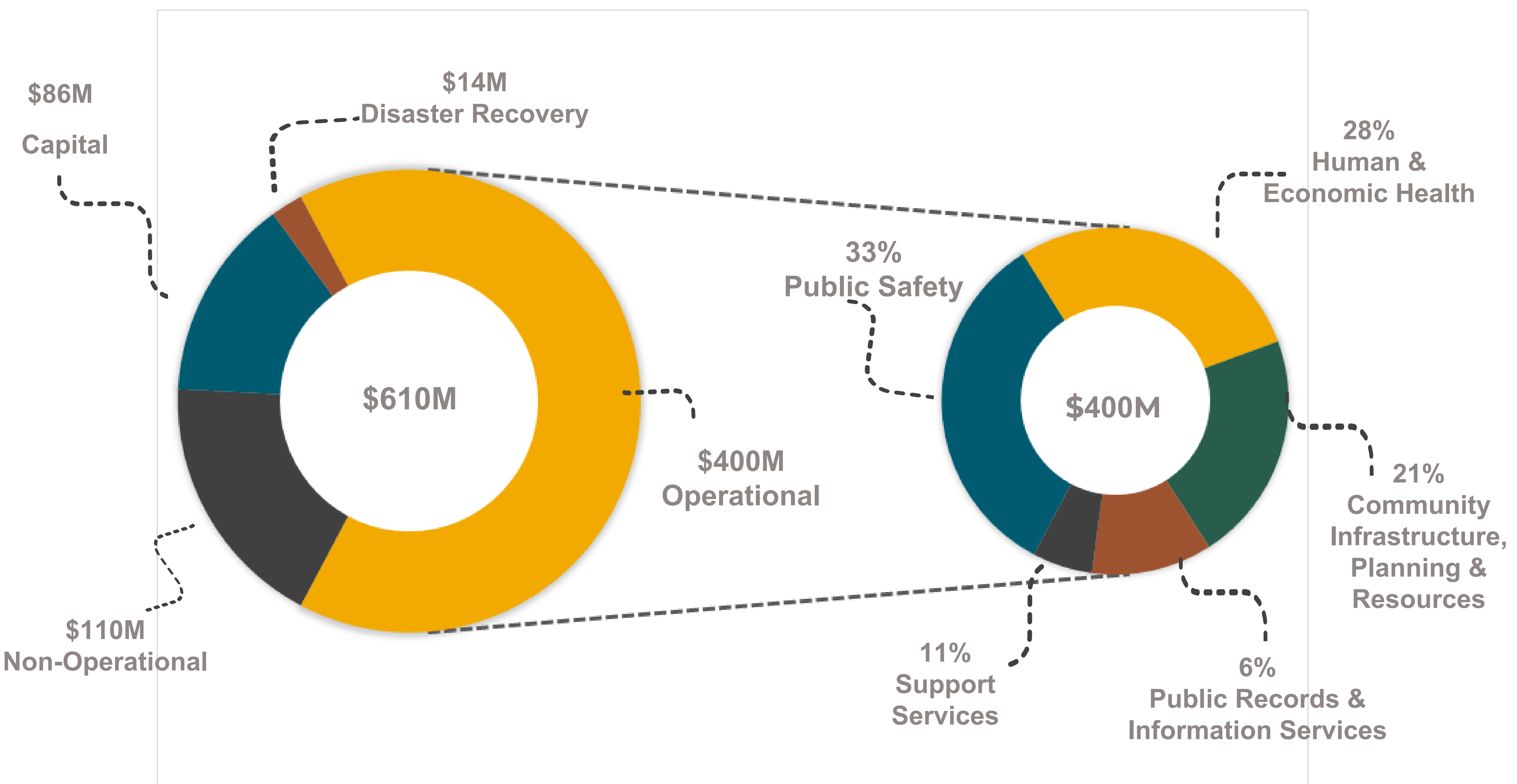


LARIMER COUNTY 2024 BUDGET BRIEF

2024 PROPOSED SOURCES OF FUNDS



2024 PROPOSED USES OF FUNDS





2024 Tax Levy Summary

Mill levies are set by each taxing authority. The tax actually paid depends on the location and value of the property. The following example is for a typical single-family home in Fort Collins, and assumes Prop HH passes.

Start with your home's appraised value :

Example = \$550,000



Next, determine your property's assessed value

[appraised value] - \$50,000
x 6.70%
\$550,000 - \$50,000 x 6.70%



= \$33,500

Multiply the assessed value by the mill levy and divide by 1,000 to calculate the annual property tax :

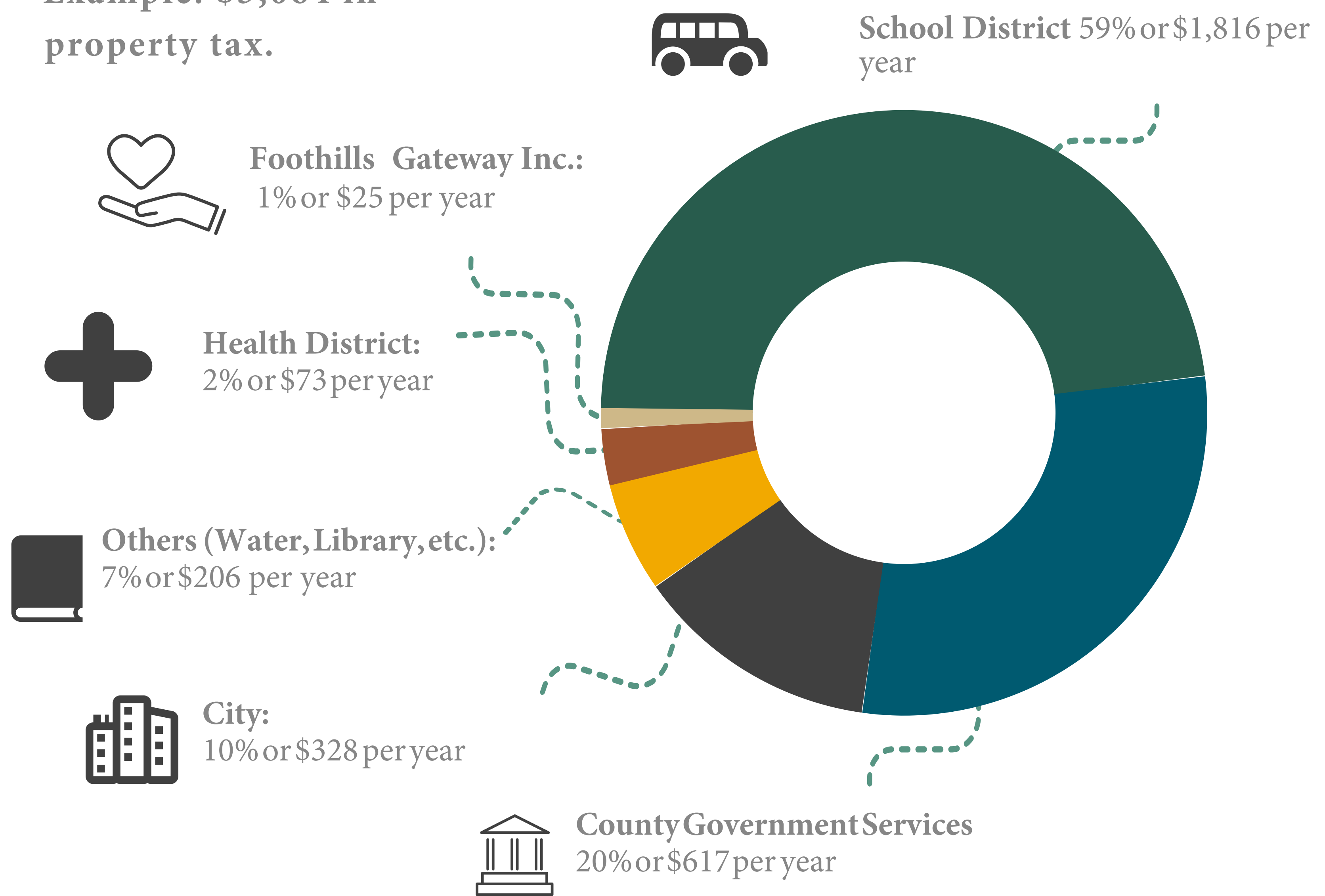
\$33,500 x 91.468 /
1,000 = \$3,064



Larimer County's share is 20%
or \$617 per year

WHERE DOES YOUR PROPERTY TAX MONEY GO?

Example: \$3,064 in property tax.



MILL LEVY OF TAXING AUTHORITY

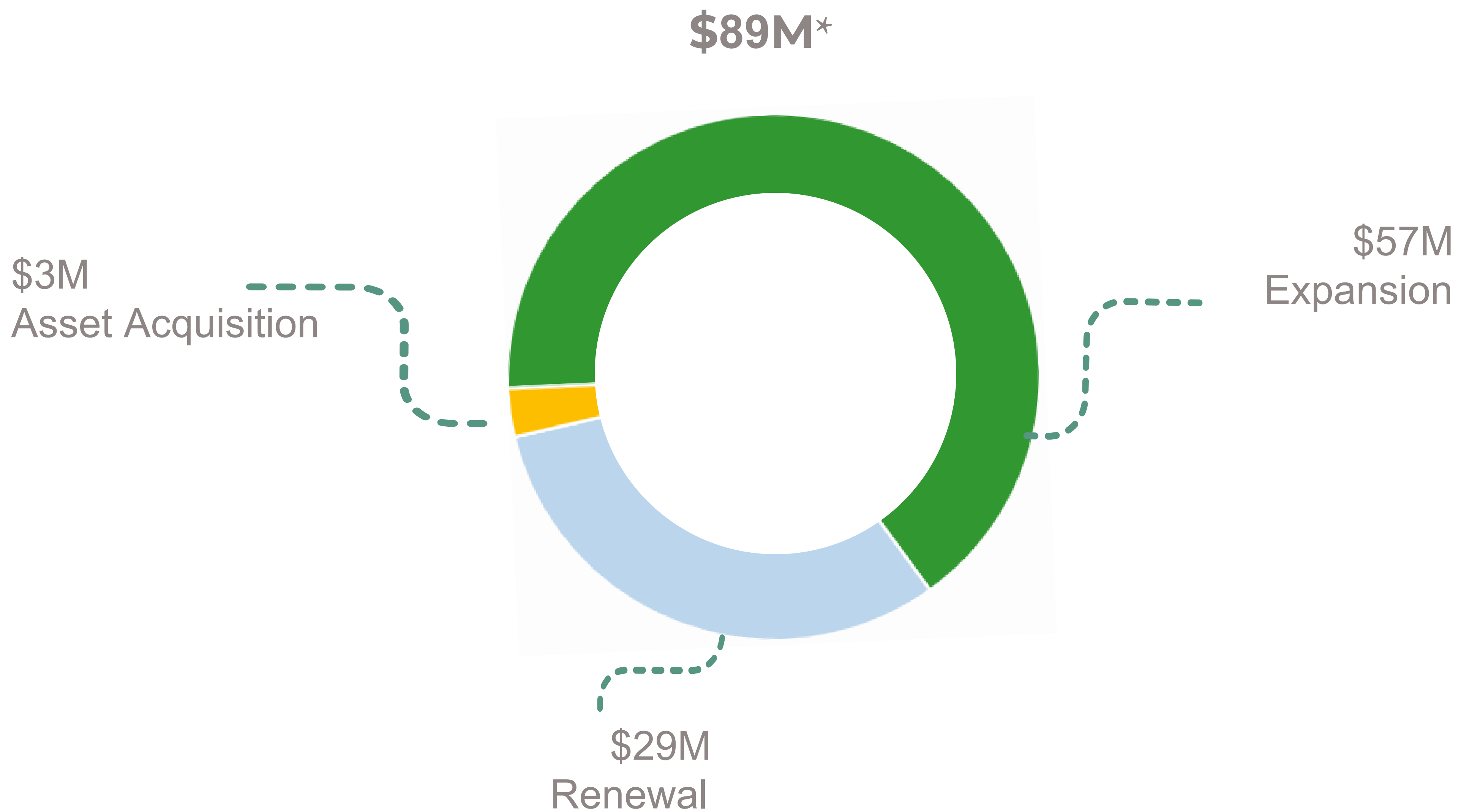
Taxing Authority	Mill Levy
School District	54.207
County Government Services	+18.351
County Abatements Levy	+ 0.054
Foothills Gateway Inc.	+ 0.750
County Government Total	19.155
City Government Services	9.797
Other Services (Water, Library, etc.)	6.142
Health/District Services	2.167
Total Mill Levy	91.468



LARIMER COUNTY 2024 BUDGET BRIEF

Capital Improvement Plan Highlights

2024 Capital Projects by Type



*Operational expenses that are part of capital projects account for the difference between the \$89M on this page and the \$86M on the first page.

FUNDED BY PROPERTY TAXES

EXPANSION	RENEWAL
New Fleet Campus - \$12M	Facilities Component Replacement - \$3M
Widen Owl Canyon Road - \$10M	Elections Remodel - \$1M
Improvements on Taft Hill - \$9M	Network Replacement - \$2M

FUNDED BY OTHER SOURCES

EXPANSION	RENEWAL	AQUISITIONS
New North Landfill - \$12M	The Ranch Master Plan - \$3M	Open Space Acquisitions - \$3M
New Central Transfer Station - \$8M	Fleet Replacement - \$7M	