

LARIMER COUNTY

2025

BUDGET

[BRIEF]

Larimer County's 2025 net operating budget is \$430 million. The total adopted budget, with non-operational governmental accounts, capital projects and disaster recovery costs is \$700 million.

LARIMER COUNTY BOARD OF COUNTY COMMISSIONERS



(From left) **Jody Shadduck-McNally**, District 3 ;
John Kefalas, District 1; **Kristin Stephens**, District 2

COMMISSIONERS MESSAGE

The Larimer County Board of Commissioners and our staff have worked hard to craft a budget that responds to increasing demand for services, legislative uncertainty, disaster recovery, takes account of uncertain economic conditions, and invests in capital projects that will enhance social equity in the community and offer better essential services to our residents, even more effectively.

LARIMER COUNTY ELECTED OFFICIALS



Bob Overbeck
Assessor



Tina Harris
Clerk &
Recorder



Stephen Hanks
Coroner



Gordon McLaughlin
District Attorney



John Feyen
Sheriff



Tom Donnelly
Surveyor

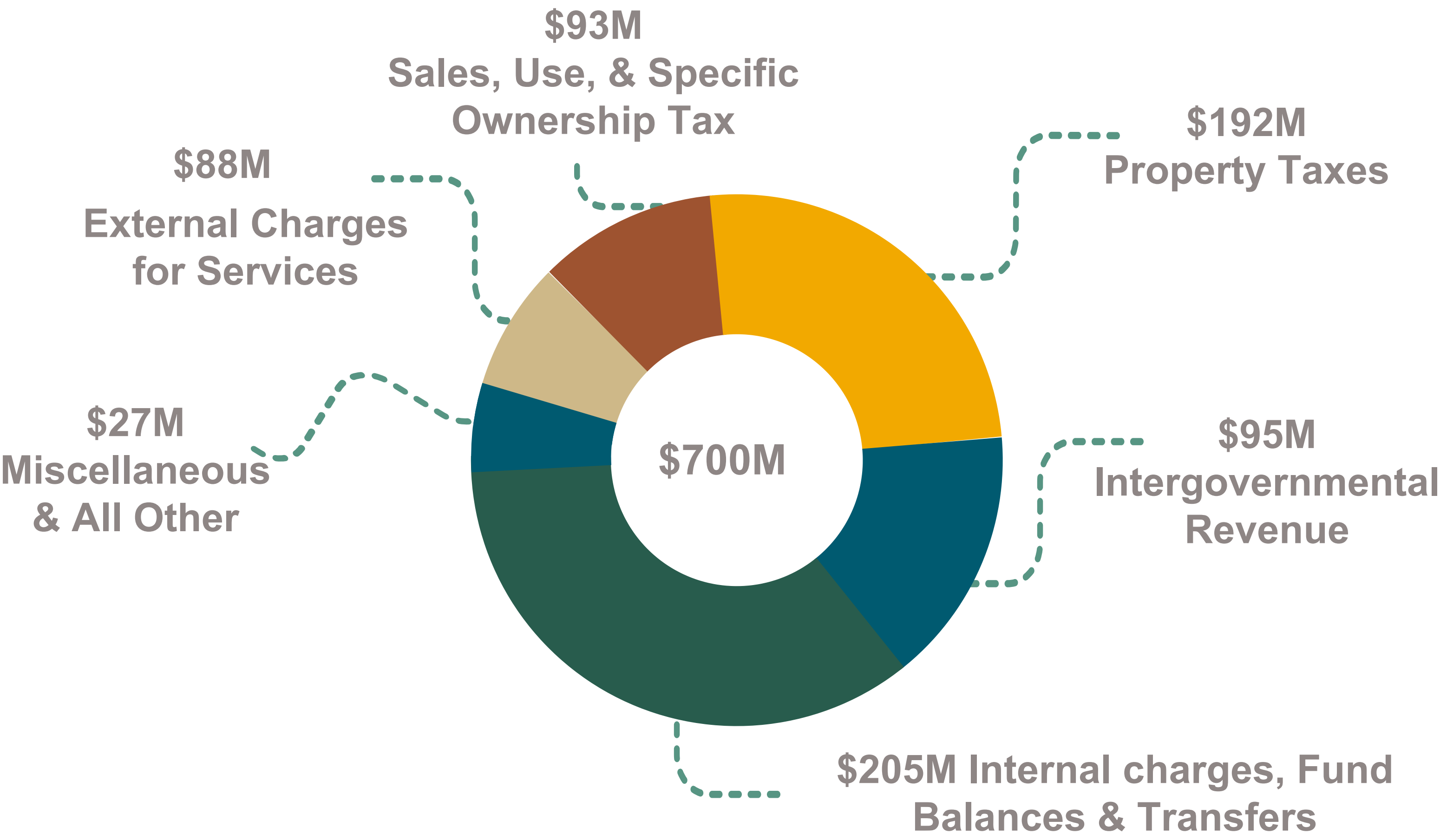


Irene Josey
Treasurer

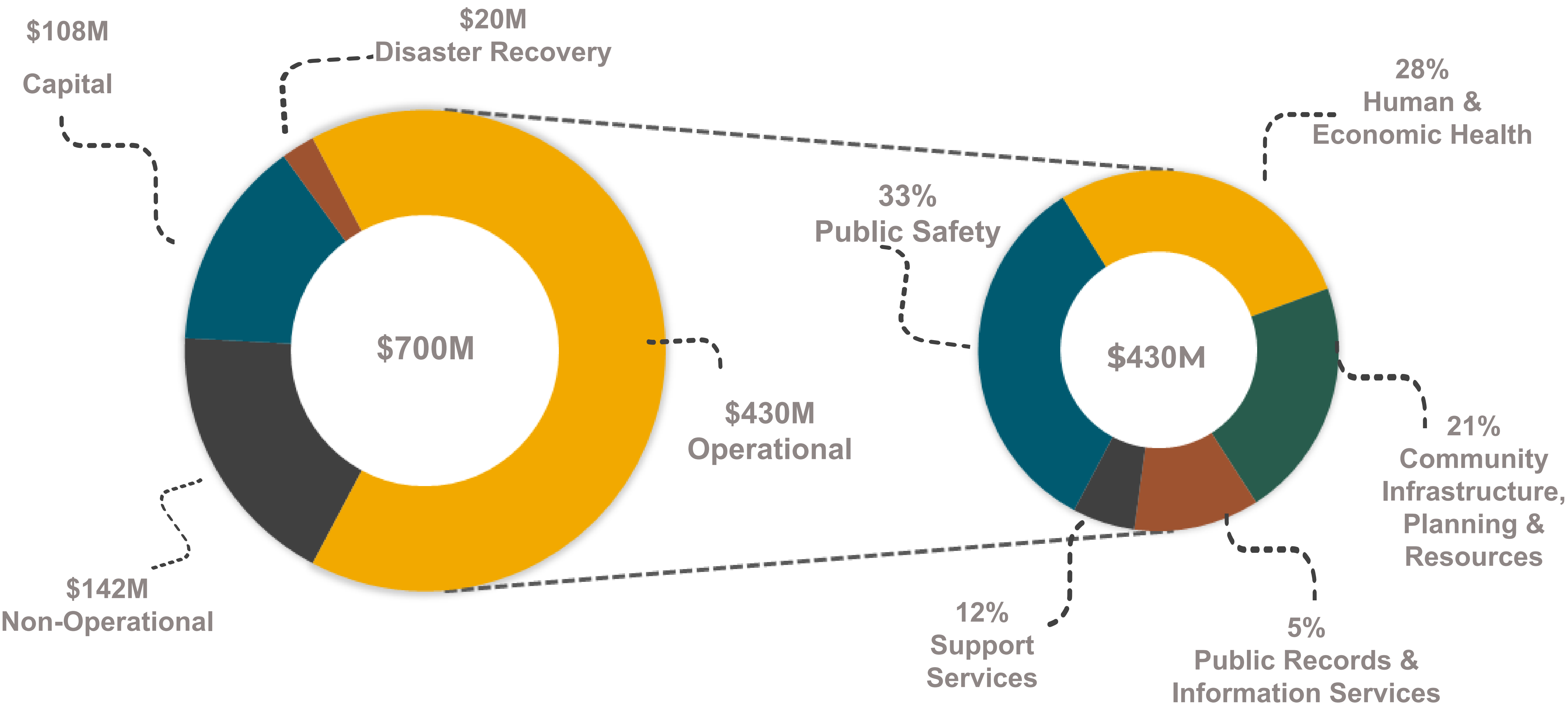


LARIMER COUNTY 2025 BUDGET BRIEF

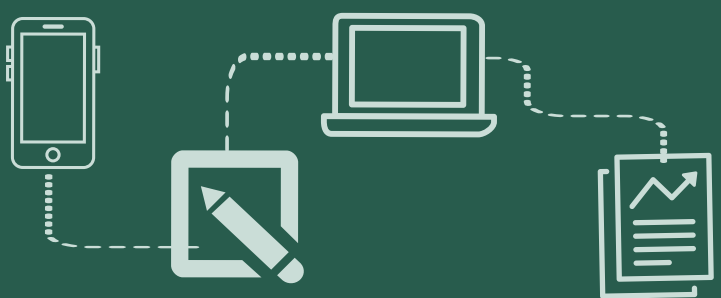
2025 SOURCES OF FUNDS*



2025 USES OF FUNDS*



*Additional information about sources and uses of funding may be found at larimer.gov/performance-budget-and-strategy/budgetsite/explorer



2025 Tax Levy Summary

Mill levies are set by each taxing authority. The tax actually paid depends on the location and value of the property. The following example is for a typical single-family home in Fort Collins.

Start with your home's
appraised value :

Example = \$600,000



Next, determine your
property's assessed value

[appraised value] - \$55,000
x 6.70%

\$600,000 - \$55,000 x 6.70%



= \$36,515

Multiply the assessed value
by the mill levy and divide
by 1,000 to calculate the
annual property tax :

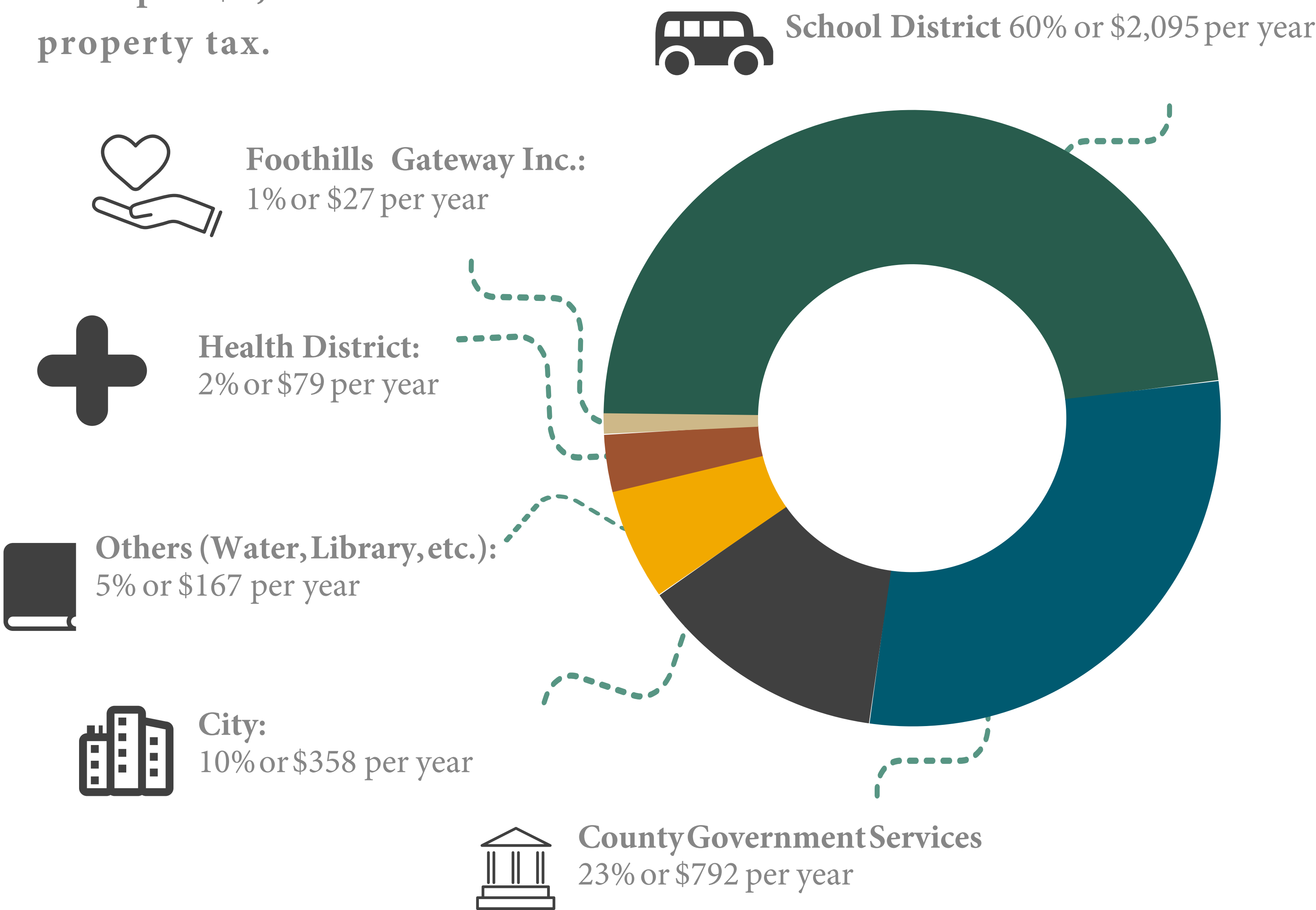
\$36,515 x 96.355 /
1,000 = \$3,518



Larimer County's share
is 23% or \$809 per year

WHERE DOES YOUR PROPERTY TAX MONEY GO?

Example: \$3,518 in
property tax.



MILL LEVY OF TAXING AUTHORITY

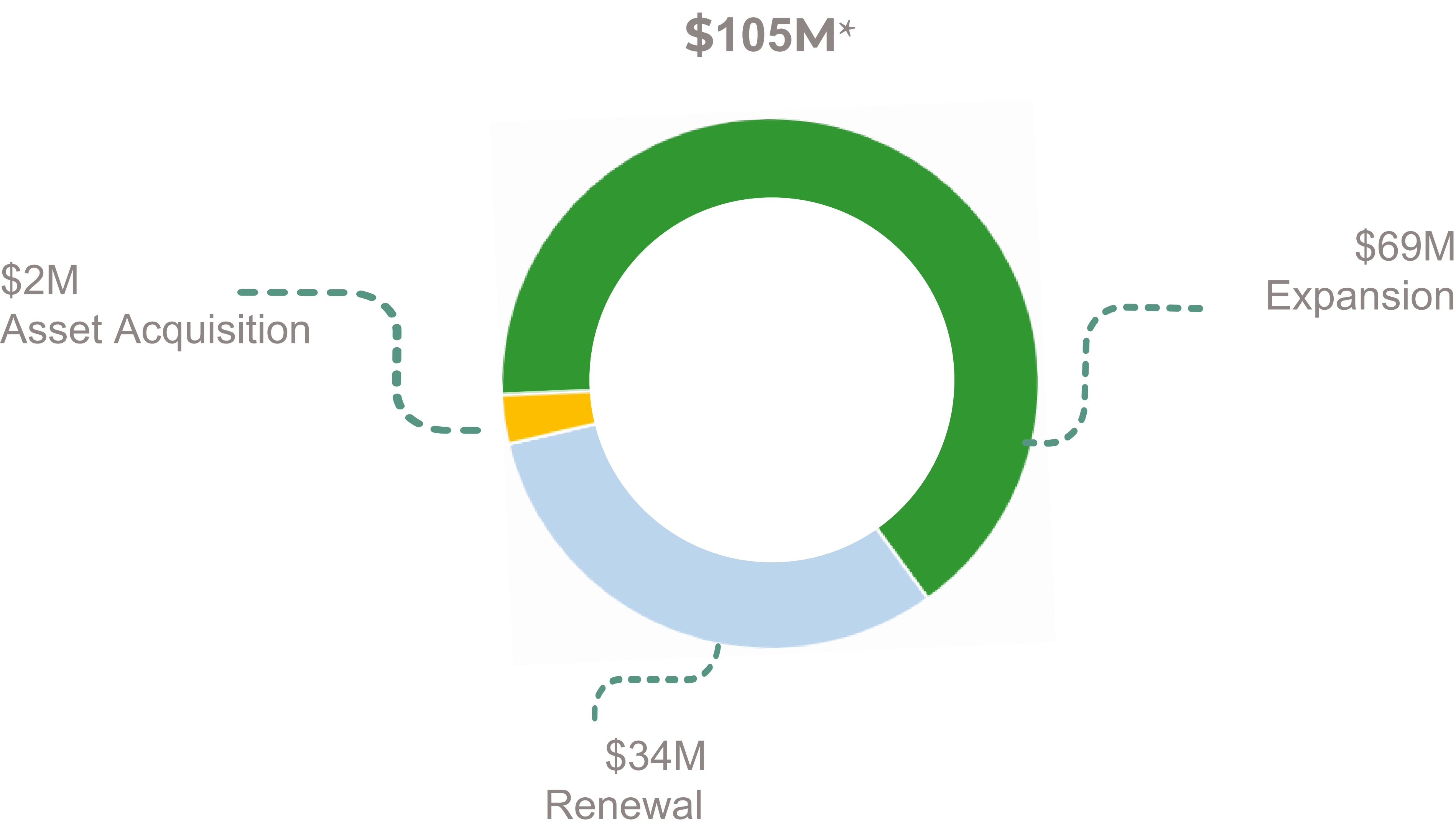
Taxing Authority	Mill Levy
School District	57.370
County Government Services	21.571
County Abatements Levy	+0.140
Foothills Gateway Inc.	+0.750
County Government Total	22.461
City Government Services	9.797
Other Services (Water, Library, etc.)	4.560
Health/District Services	2.167
Total Mill Levy	96.355



LARIMER COUNTY 2025 BUDGET BRIEF

Capital Improvement Plan Highlights

2025 Capital Projects by Type



*Operational expenses that are part of capital projects account for the difference between the \$105M on this page and the \$108M on the first page.

FUNDED BY PROPERTY TAXES

EXPANSION	RENEWAL
Emergency Services Building - \$20M	Information Technology Infrastructure - \$2M
Road and Bridge Improvements - \$1M	Technical Communications Replacement - \$576K
	Network Replacement - \$450K

FUNDED BY OTHER SOURCES

EXPANSION	RENEWAL	AQUISITIONS
New North Landfill - \$14M	The Ranch Master Plan - \$4M	Open Space Acquisitions - \$4M
New Central Transfer Station - \$21M	Fleet Replacement - \$177M	