

A GUIDE TO LIGHT BULB DISPOSAL

Compact Fluorescent (CFL), LED, Incandescent, and Sodium Vapor

COMPACT FLUORESCENT (CFL)

CFLs create light by heating up mercury vapor inside. Handle these bulbs with care! Mercury vapor is released when they break.

Dispose of them properly at a hazardous waste facility.



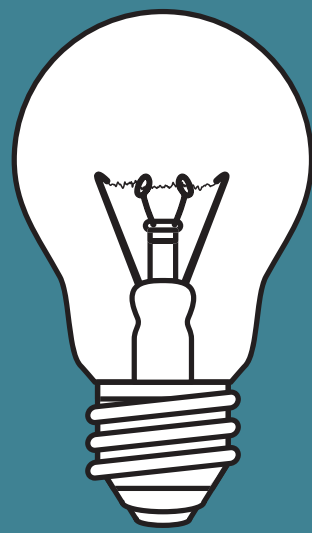
LIGHT EMITTING DIODE (LED)

LEDs use an electric chip to let off light. They are very energy efficient. *It is safe to put them in the trash.*

INCANDESCENT

Incandescent bulbs let off light when an electric current passes through a filament inside. The filament heats up and glows.

It is safe to put them in the trash.



SODIUM-VAPOR

Sodium-vapor bulbs work similarly to CFLs. They are often used for outdoor lighting or as grow lamps.

Dispose of them properly at a hazardous waste facility.

TL;DR:

*CFL, Sodium Vapor: Hazardous waste
LED, Incandescent: Regular Trash*

