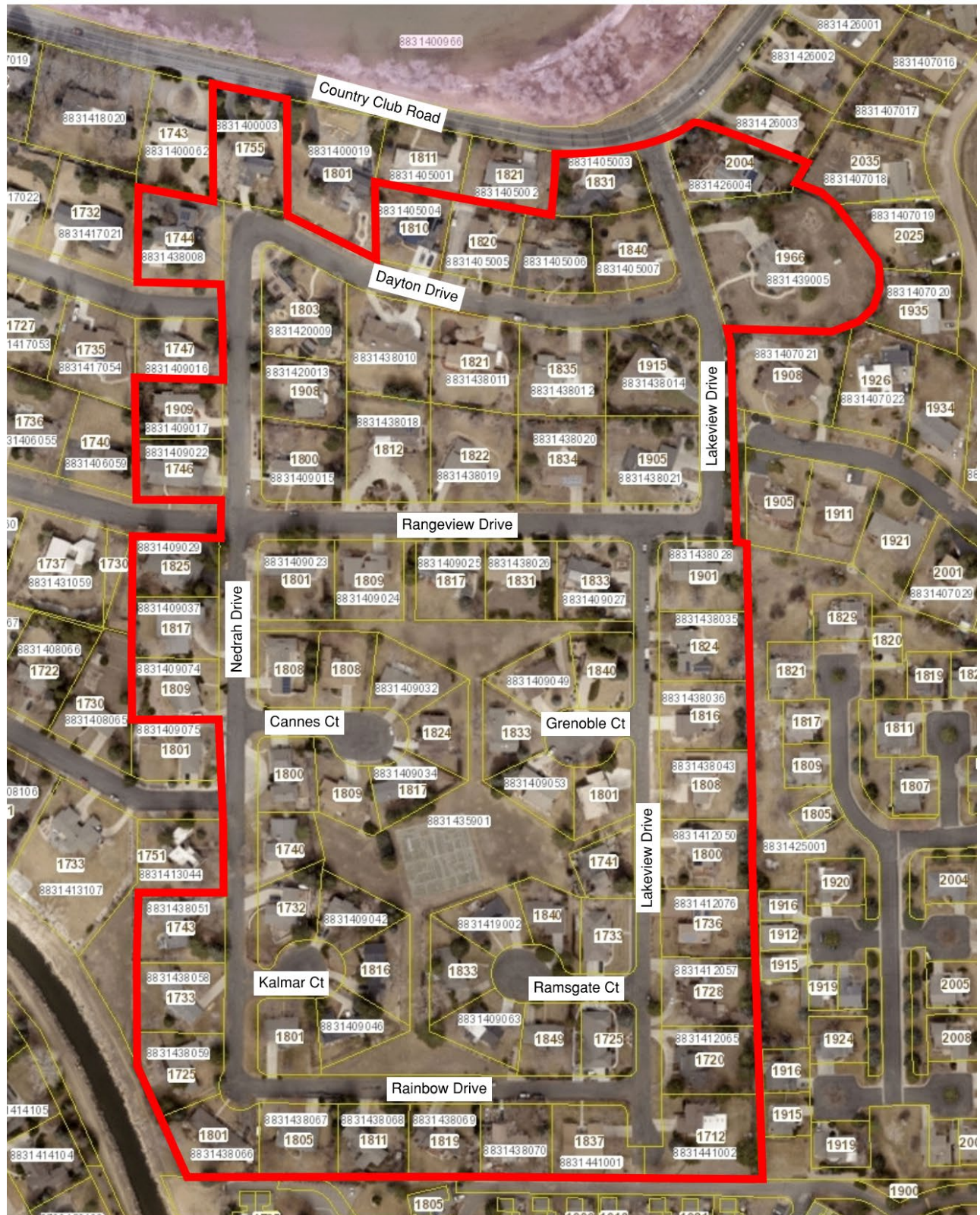


Nedrah Acres Proposed Public Improvement District Map & Information



Collecting \$142,000 in the first year (mill levy = 34.734) increasing annually based on property valuation

Average Cost for each property in the first year = \$1,919 (will vary based on Assessed Value: low \$1,187 high \$2,732)

PID collection can be lowered after overlay projects for future ongoing maintenance