

CLIMATE SMART FUTURE *Ready*

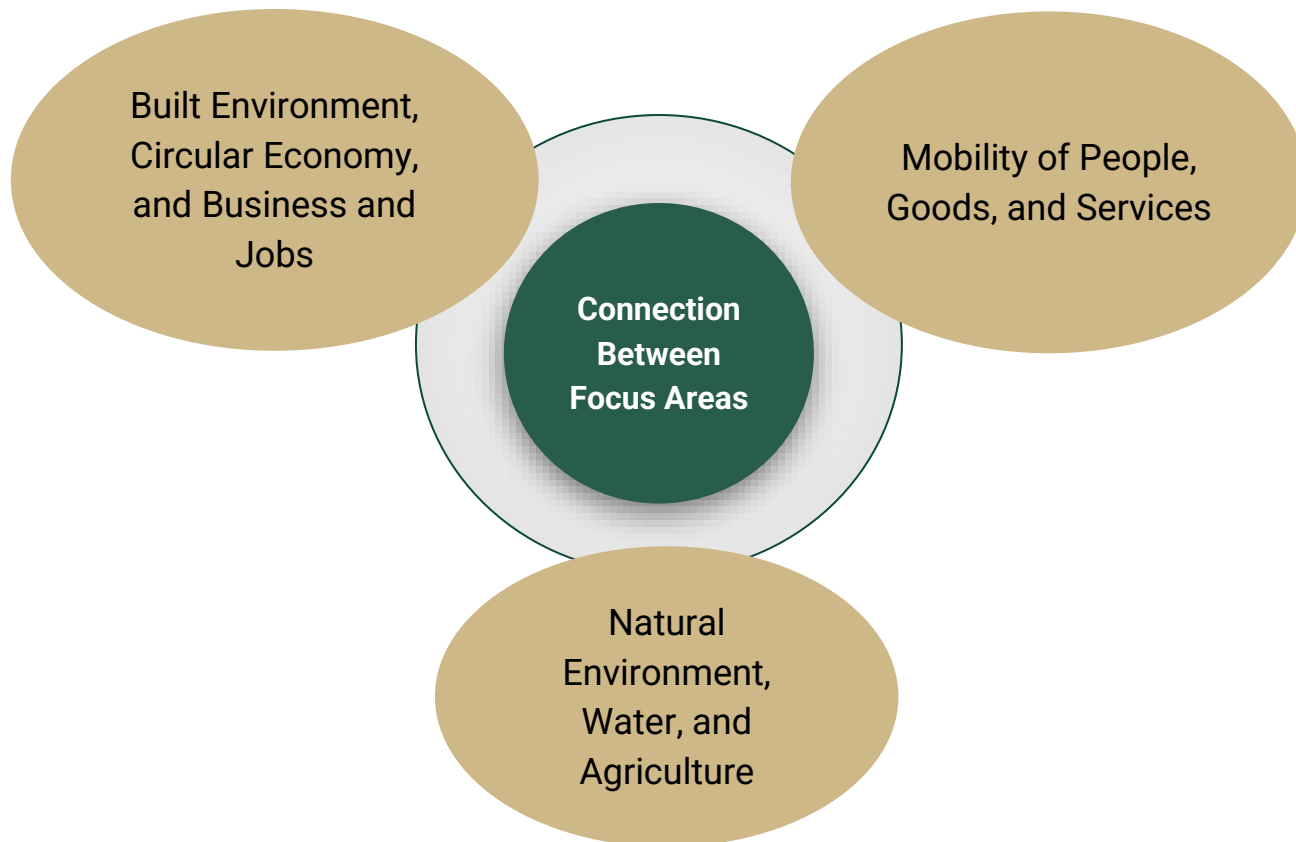


www.larimer.gov/csfr

Heidi Pruess
Manager, Office of Sustainability and Climate
pruesshb@co.larimer.co.us
970-498-7138

FOCUS AREAS

CLIMATE **SMART**
FUTURE *Ready*



THE APPROACH



What is the County's Approach and Role?

- Zoom out and look beyond local government boundaries to what is happening in our County and region
- Consider sustainable (environmental, economic, and social) needs and impacts
- Discover gaps and overlaps
- Nurture and enhance partnerships
- Align priorities as much as possible

Partners Making It Happen!!



CLIMATE SMART KNOWLEDGE BREAK SERIES

Bring your own lunch. Light refreshments provided. Free!

04/09

Water Wisdom: A Quick
Dive into the Larimer
County Water Plan

Details

12PM, Innosphere Ventures
320 E Vine Dr #101, Fort Collins



WATER WISDOM:

A QUICK DIVE INTO THE LARIMER COUNTY WATER PLAN



CLIMATE **SMART**
FUTURE *Ready*

Danielle Reimanis

Planner, Water Master Plan Coordinator

WHAT IS A WATERSHED?

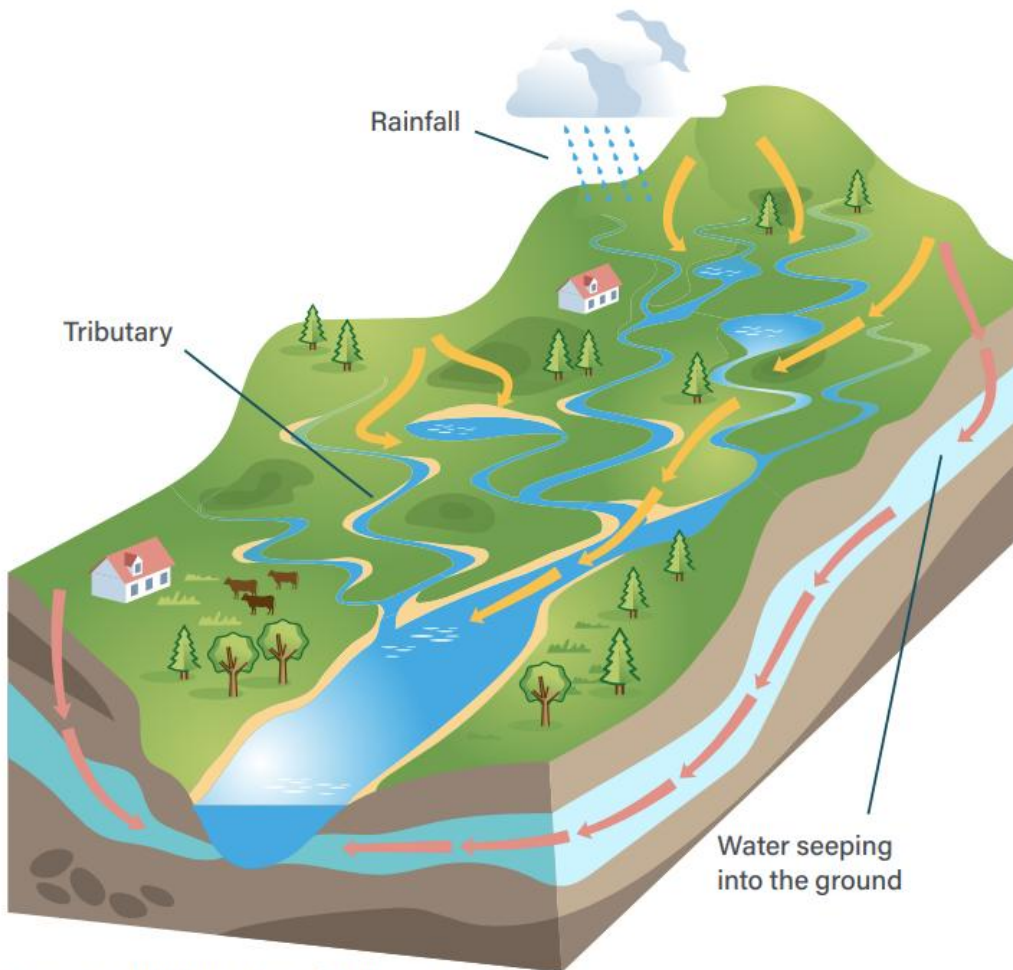


Figure 1.1 An Illustration of a Watershed.



DEFINING A WATERSHED

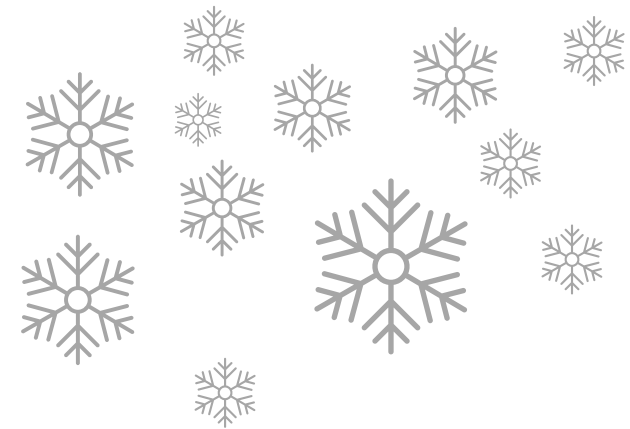
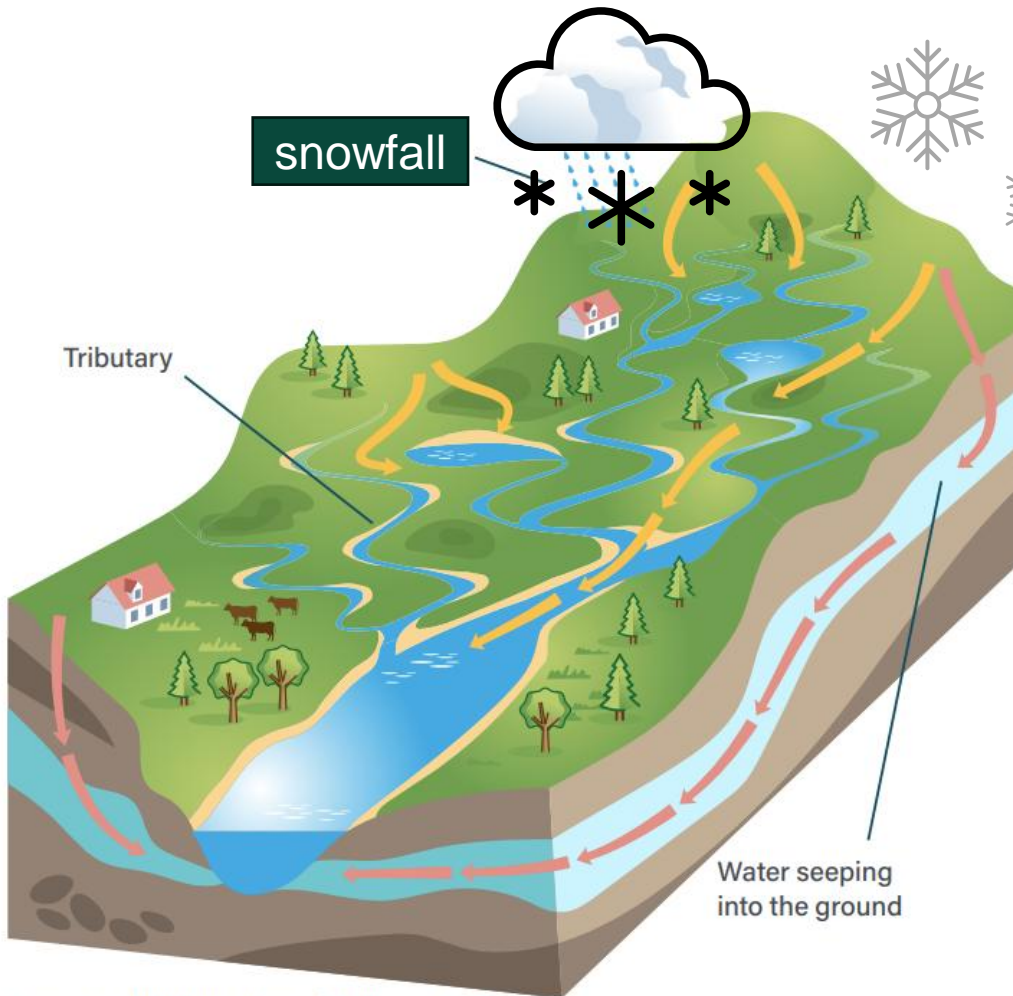
- An area of land where all the water that falls as rain or snow drains into a common waterway.
- It acts like a natural basin, collecting and channeling water to a central point.
- Watersheds are scalable. They can be as small as ones shown in Figure 1 or they can cover larger areas such as the Cache La Poudre.



WHY DO WATERSHEDS MATTER?

- Many factors can impact watersheds, such as pollutants, natural disasters like forest fires and flooding events, the type of nearby land use, and recreation.
- Protecting the health and function of a watershed is important to have safe, reliable, and sustainable water supplies and recreational opportunities for Larimer County residents.

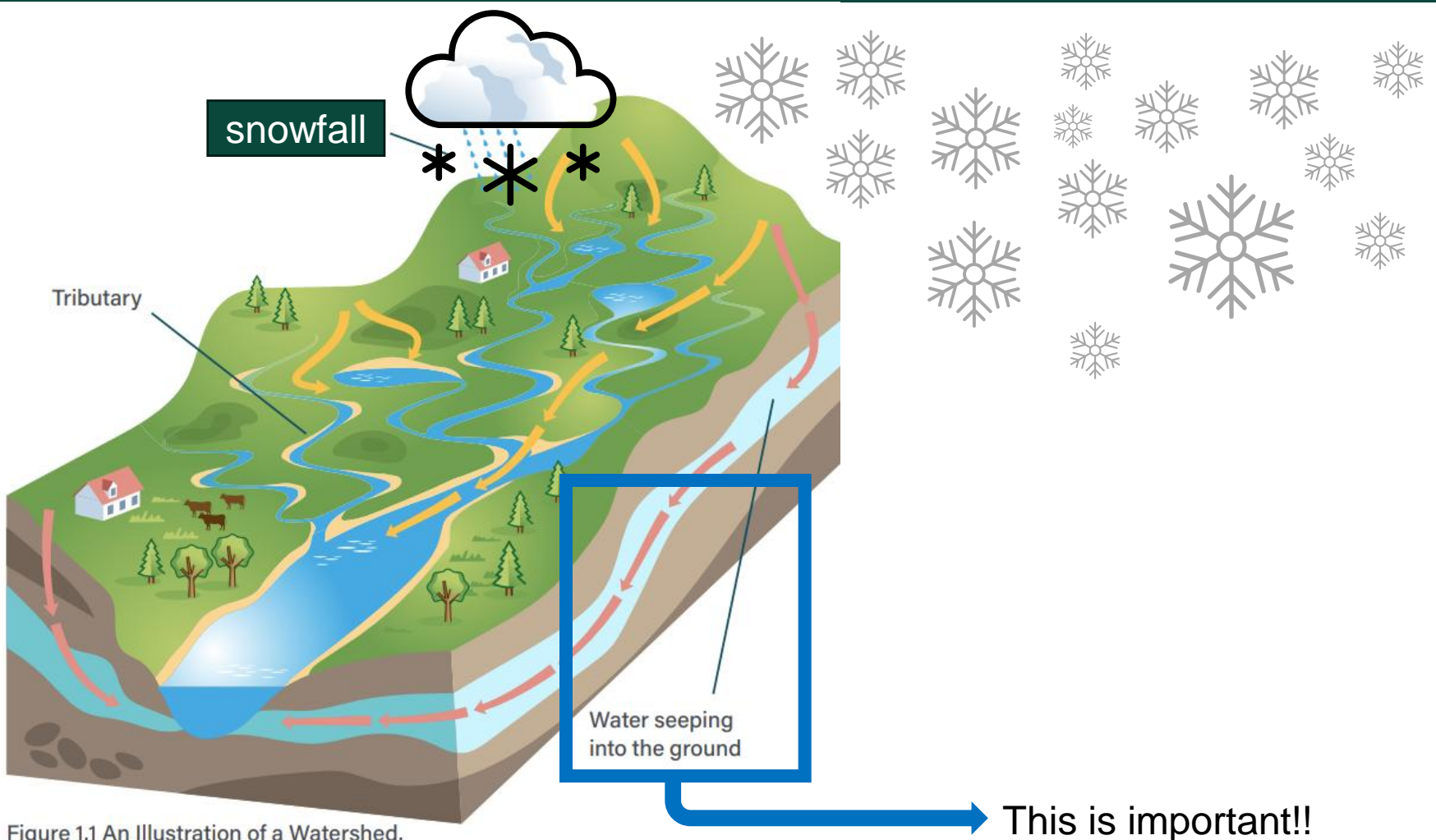
WHAT IS A WATERSHED?



Snowmelt runoff provides as much as 80% of Colorado's annual surface water supply.

Figure 1.1 An Illustration of a Watershed.

WHAT IS A WATERSHED?



WATERSHEDS ARE SCALABLE

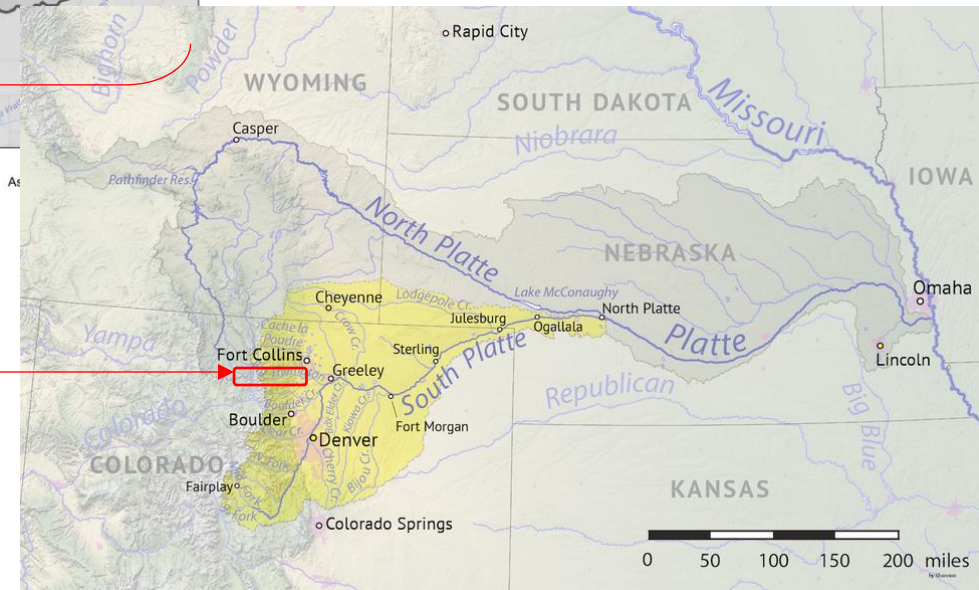
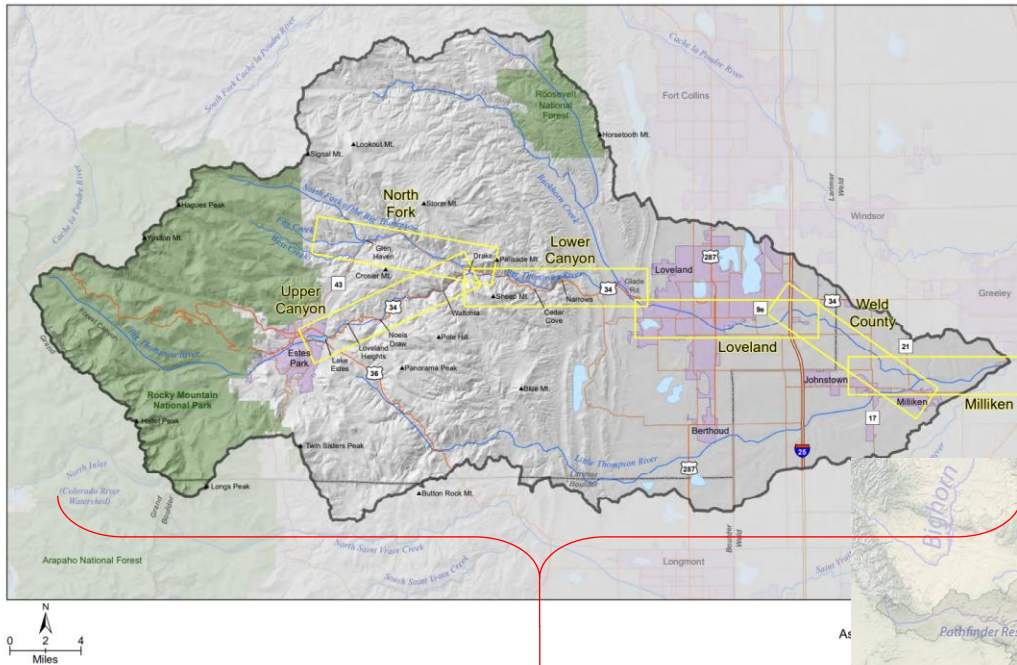


Image Sources:

- https://bigthompson.co/wp-content/uploads/2019/03/BTWC_Master_Plan.pdf
- https://commons.wikimedia.org/wiki/File:South_Platte_basin_map.png

TRANSMOUNTAIN DIVERSIONS

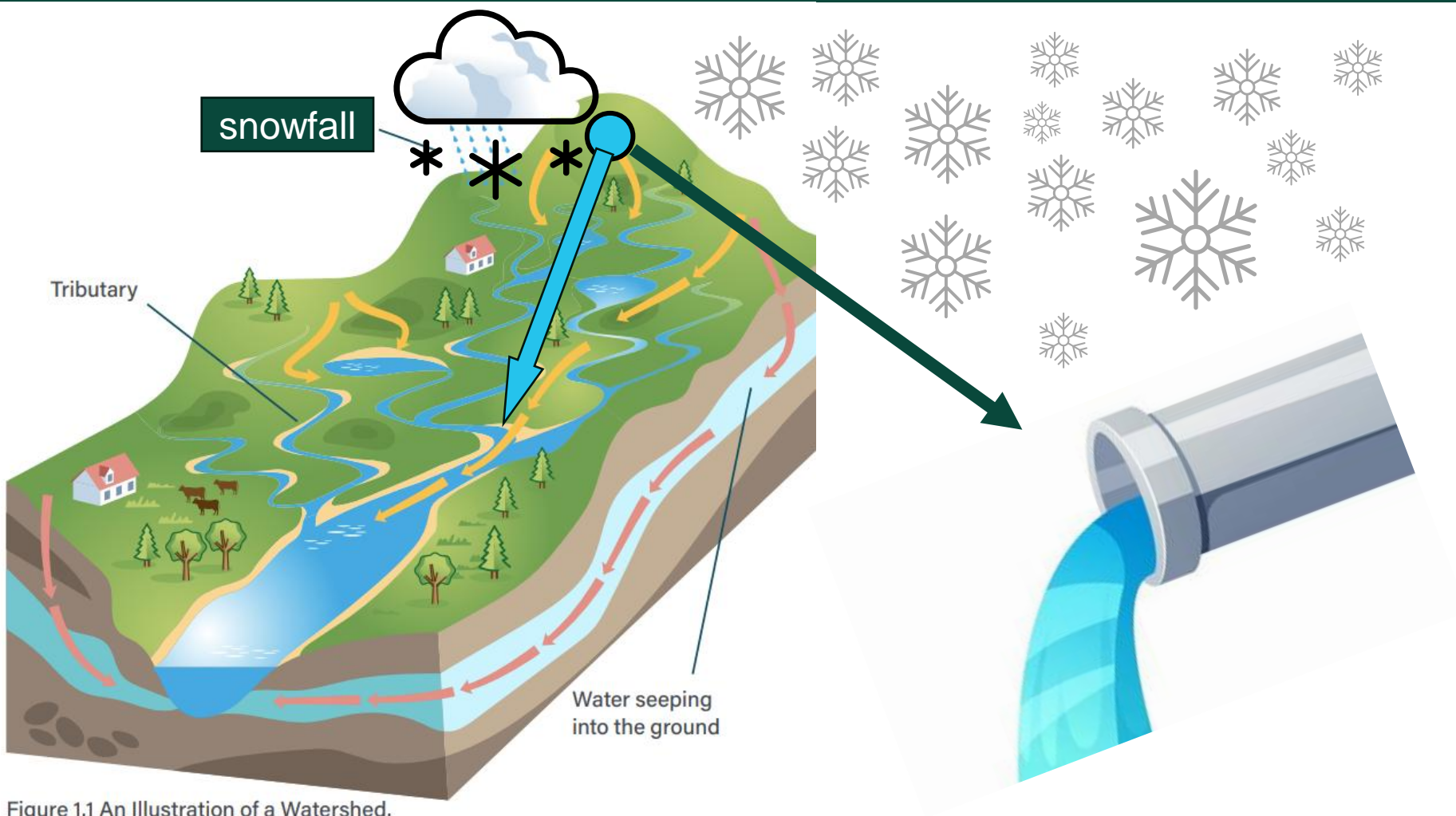
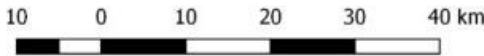
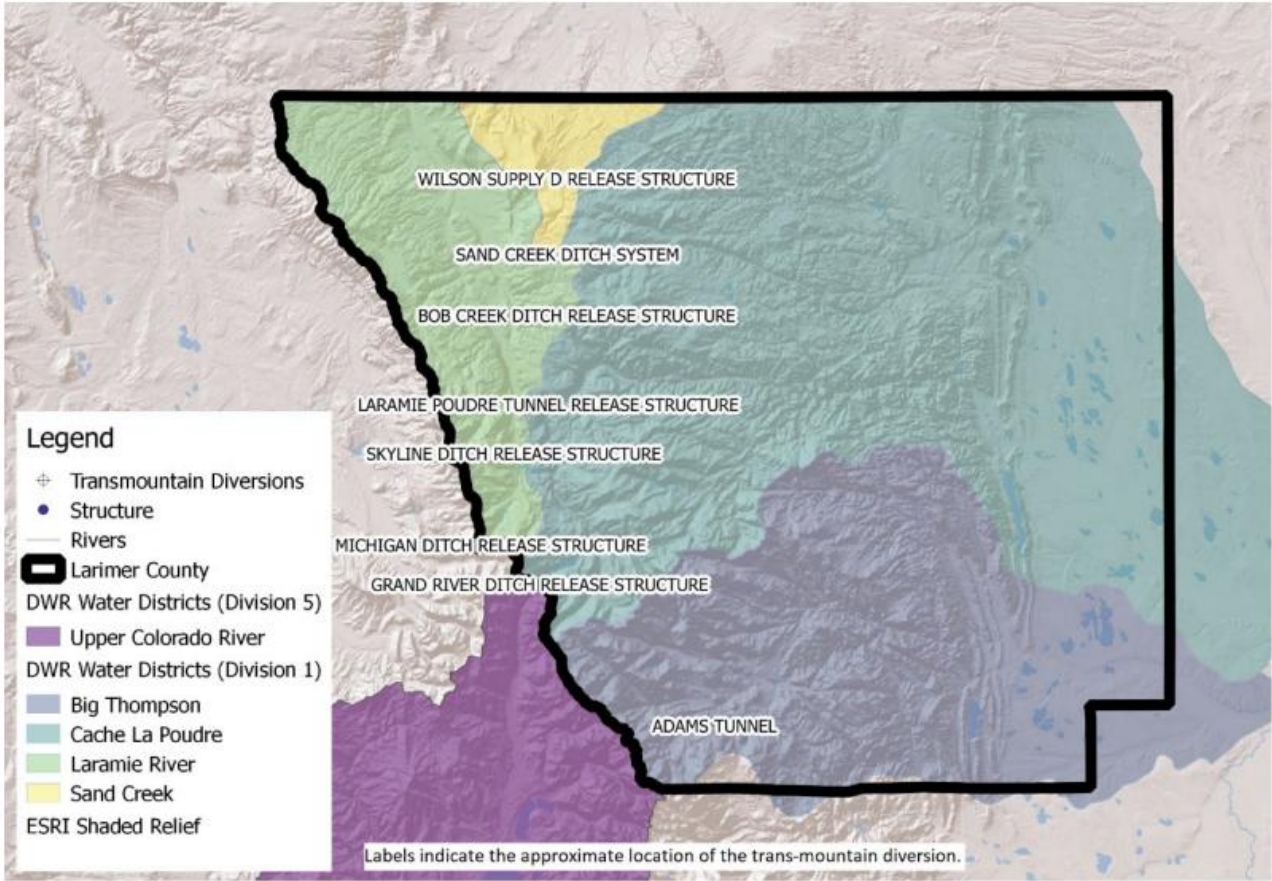


Figure 1.1 An Illustration of a Watershed.

TRANSMOUNTAIN DIVERSIONS



COLORADO BIG THOMPSON PROJECT



Image Source:

- <https://www.northernwater.org/getmedia/3c15e504-54bf-4b2a-abd9-48e881e808d0/CBT-Project-Map.pdf>

WHY ARE WE DOING THIS?

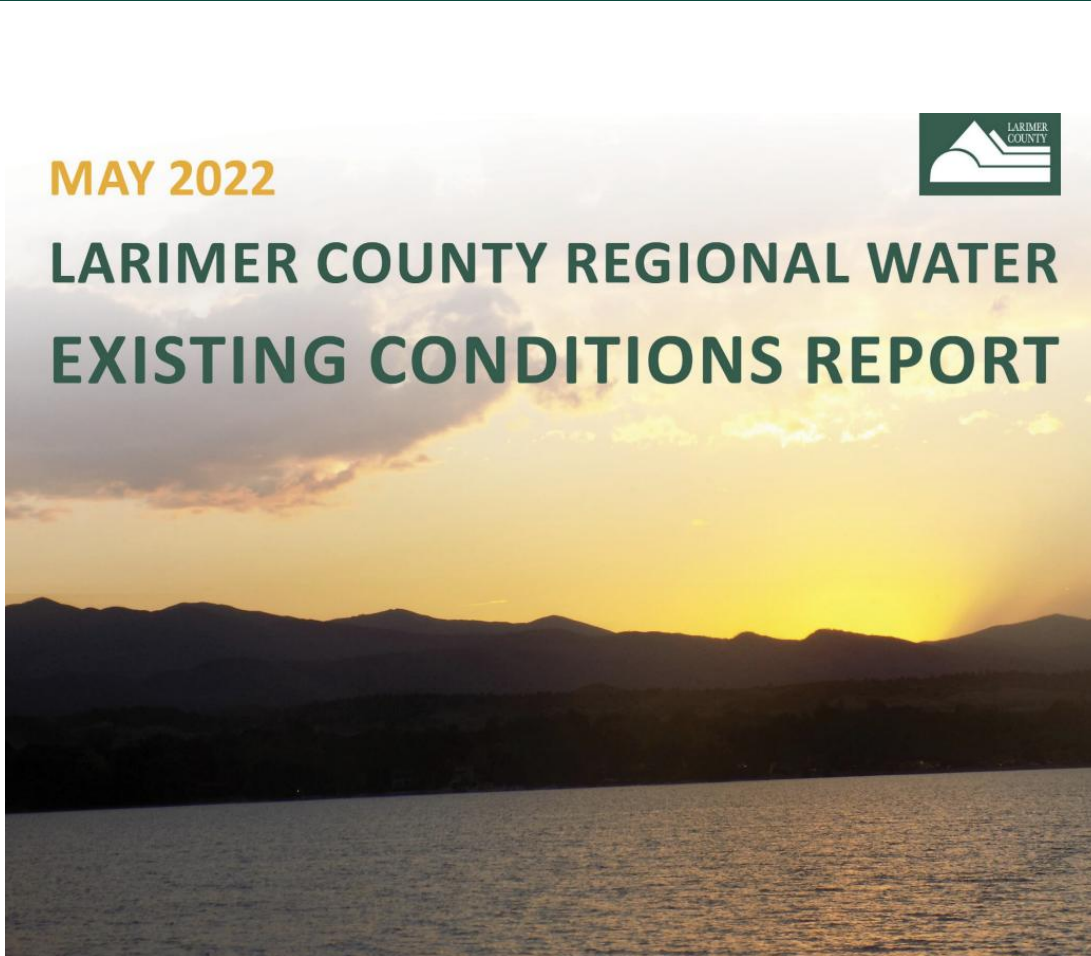
1. Larimer County is NOT a water provider
 - We do not sell, deliver, treat, or manage water
2. As stewards of both the environment and our community, it is our responsibility to address critical topics, like water.

BASELINE REPORT (PHASE 1)

MAY 2022



LARIMER COUNTY REGIONAL WATER EXISTING CONDITIONS REPORT



larimer.gov/planning/water

- **Water Supplies**
 - 57% local sources
 - 43% CO River
- **Agriculture**
 - 47% decline in irrigated lands
- **Water Providers**
 - 124 centralized public water systems (9 that publish water demand and forecast into the future)
 - 385,600 people served by centralized water system
 - 25-90% projected growth in water demands at buildout
 - 10,589 homes reliant on groundwater wells

WATER MASTER PLAN (PHASE 2)

The Water Master Plan outlines the County's role in:

- Supporting **water conservation**
- Protecting **watershed health**
- **Collaborating** with water providers and stakeholders to address **water supply challenges**
- **Mitigating hazards**
- Ensuring long-term **water security** for the community and region

- Adopted Nov. 2024 by Planning Commission
- Approved Dec. 2024 by the County Commissioners
- The plan acts as the water supply element for the **Comprehensive Plan** (Colorado Revised Statutes Title 30, § 30-28-106)

Many thanks to:



FEMA

SWCA
ENVIRONMENTAL CONSULTANTS

Sept – Oct 2023

1 | Committee Formation

2 | Identify Challenges

Nov 2023

3 | Vision and Goals Public Workshop

Dec 2023 – Mar 2024

4 | Data Review, Inventory, and Gap Analysis

Apr – May 2024

5 | Watershed Analysis

June - Sept 2024

6 | Develop Actions

Nov 2024

7 | Develop Water Master Plan

Adoption and Approval

Includes Stakeholder Engagement

LARIMER COUNTY
COMMITTED TO EXCELLENCE

IDENTIFYING CHALLENGES

WATER SUPPLY & DEMAND PLANNING

Planning for how much water we have and how much we will need in the future.

WATERSHED HEALTH

Protecting important habitats and keeping the water clean and safe from pollution.

WATER RIGHTS

Understanding the rules around water use better and protecting Larimer County's agricultural heritage.



KEY CHALLENGES OF PROTECTING OUR WATER SUPPLY



WATER INFRASTRUCTURE

Taking good care of water systems and supporting thoughtful storage.

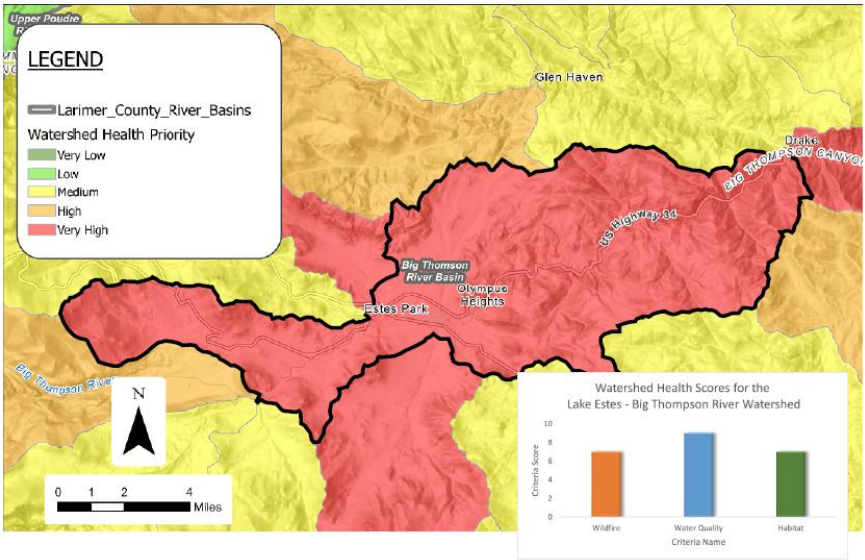
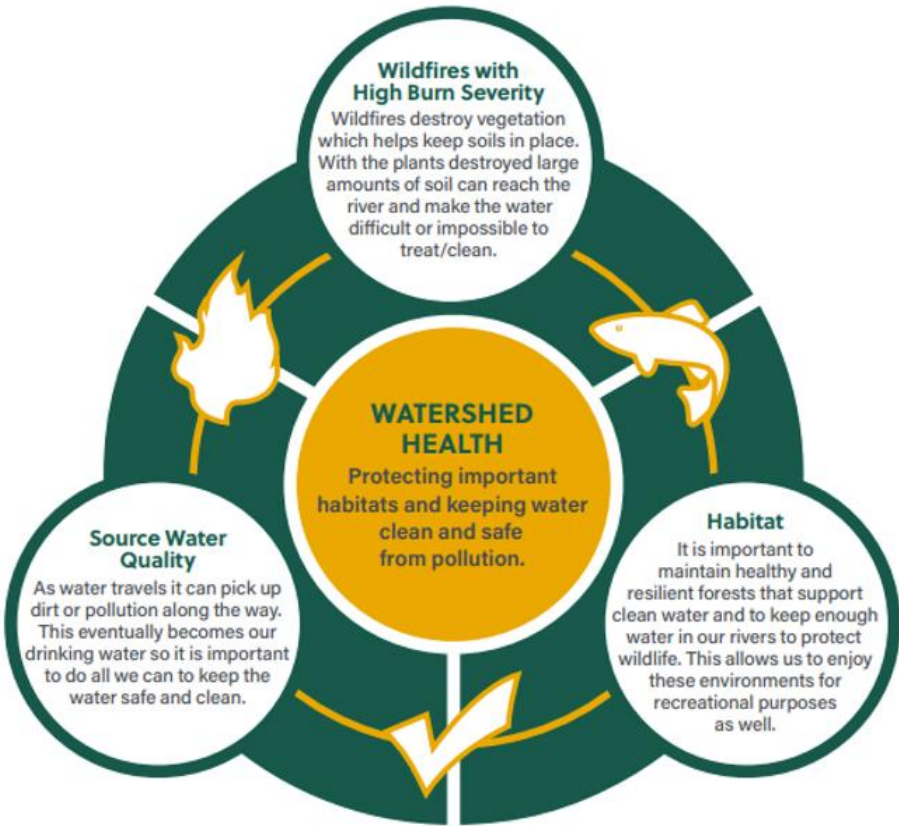
WATER CONSERVATION POLICIES & GUIDELINES

Promoting good policies and resources to help make the most of the water we have.

WATER EDUCATION

Providing more opportunities for leaders in water, local government officials, and the public to learn about water in Larimer County.

WATERSHED HEALTH



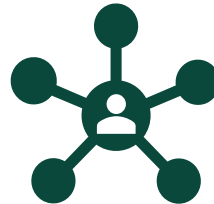
Wildfires	Water Quality	Habitat
<ul style="list-style-type: none">CWCB Wildfire Ready Watersheds	<ul style="list-style-type: none">Proximity to:<ul style="list-style-type: none">Oil tanksMinesIndustrial ZoningIrrigated LandsSeptic Systems303D List	<ul style="list-style-type: none">Reduced Streamflow (from Calls on the river)In-Stream Flow RightsTier 1 Aquatic SpeciesThreatened/Endangered SpeciesRiparian proximity to urbanizationWetland proximity to urbanization

VISION AND GOALS

Larimer County, guided by a commitment to stewardship, is dedicated to safeguarding local and regional water systems, aligning future land use with available water resources, and helping to build resilient communities and ecosystems equipped to address future water challenges.



**Minimize the Threat to
Watersheds from Hazards
(i.e., floods, severe
wildfires)**



**Communicate and
Collaborate to Support
Water Sustainability**



**Promote Water Literacy
in Our Community**



**Align Land Use Planning
with Water Resources**



**Enhance Water Efficiency
and Conservation Measures**

STRATEGIES (TIMEFRAME)

County to Lead with partners

- **Integrate Water Plan Strategies and Actions into Related County Plans** (1-5 Years)
- **Water Security** (1-5 Years)
- **Improve Water Efficiency and Conservation** (1-6 Years)
- **Protecting Water to Promote a Viable Agricultural Economy** (3-10 Years)
- **Growing Water Smart** (3-10 Years)

County to Support partner's efforts

- **Support Fuel Reduction Outcome** (Ongoing)
- **Support Watershed Health Outcomes** (Ongoing)
- **Protecting Water Supplies** (1-2 Years)
- **Public Education & Resource Clearinghouse** (1-2 Years)
- **Address Water Quality and Water Efficiency in Disproportionately Impacted Communities** (3-10 Years)

MITIGATION STRATEGY 1:

Integrate Water Plan Strategies and Actions into Related County Plans

LARIMER COUNTY WATER PLAN

Strategy Tags: #SupplyAndDemandPlanning
#ChangesInLandUse #PlanAdoption



COUNTY ROLE: Lead

Opportunity Identified:

The Water Plan will become an element of the Larimer County's Comprehensive Plan, which is updated at least every ten years. It's crucial to integrate Water Plan outcomes into county-wide planning, policies, and decisions across all departments. This ensures water sustainability is embedded in our guiding documents.

Actions Identified:

- Ensure Water Master Plan goals are integrated into the Comprehensive Plan update and other relevant County plans.
- Determine staffing resources required for updates.
- Align the zoning map with water provider service areas and locations of secure water availability, paying attention to zoning types and locations with high demand uncertainty.
- Conduct a comprehensive review of current plans and codes, and assess current policy to identify specific areas for improvement around water efficiency and watershed health.
- Use the Comprehensive Plan update to reassess and determine



TIMEFRAME: 1-5 Years

If setbacks and buffer requirements are appropriate to protect watershed and agricultural health, and explore how adjacent land uses might affect water quality.

Why It's Important:

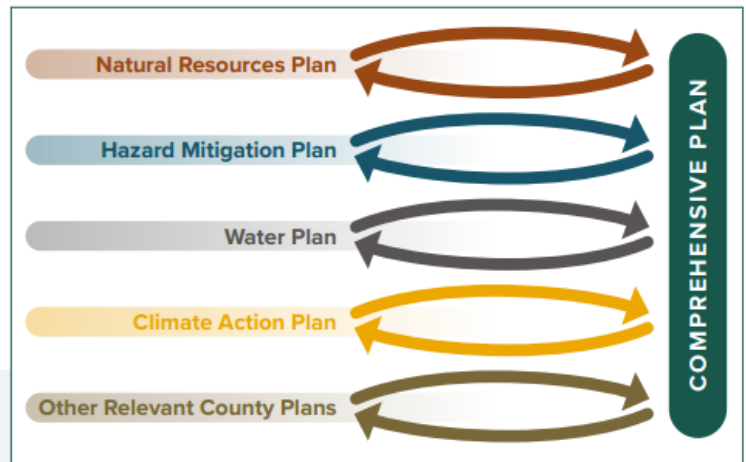
Aligning priorities is important for clear decision-making and smart use of resources. When all departments understand water resource goals, it helps avoid conflicting policies or projects that could harm sustainable water use. It also encourages better teamwork between departments and water providers, making sure water needs are a key part of planning decisions.

Desired Lasting Impact:

- Have water embedded in every level of planning.
- Become more resilient to climate change, improve water conservation, and protect watersheds.

Where Could the Efforts Be Focused? ►►

Updating and integrating the water plan into existing County plans and codes will benefit the entire county.



The Water Plan will become an element of the Comprehensive Plan. Since the County doesn't manage its own water utility, it's important to figure out how the strategies from the Water Plan can work within existing plans and systems to ensure its success.



STRATEGY LOGISTICS

Key Department(s)

Larimer County Department: Community Development

Staff Commitment

- Time to support grant writing processes
- Time and resources for thorough public engagement
- Time to manage consultant contracts

Potential County Funding Mechanisms:

Community Development Budget and Grant Funding

SUMMARY	
Level of Total Investment	● ● ○ ○ ○
Total Cost (\$)	● ○ ○ ○ ○
Staffing Requirements	● ● ○ ○ ○
Lasting Value	● ● ● ● ○
Partnership Opportunities	● ● ● ○ ○
Plan Goals Addressed	Goal 1: Obj 2, Obj 3 Goal 2: Obj 1, Obj 2 Goal 4: Obj 1, Obj 4 Goal 5: Obj 1, Obj 2



POTENTIAL PARTNERS

- Primarily an Internal County-Led Effort with Input from the Public
- Larimer County Municipalities & Water Providers
- Other Water Entities, Practitioners and Stakeholders



ADDITIONAL FUNDING OPPORTUNITIES

CWCB (Colorado Water Conservation Board)

- cwcb.colorado.gov/funding/grants

DOLA (Department of Local Affairs)

- dlq.colorado.gov/climate-resilience-challenge
- dlq.colorado.gov/community-development-block-grant-cdbg

BOR (Bureau of Reclamation)

- usbr.gov/watersmart/index.html

MITIGATION STRATEGY 3:

Support to Watershed Health Outcomes

LARIMER COUNTY WATER PLAN

Strategy Tags: #WatershedHealth #Wildfire
#WaterQuality #Habitat



COUNTY ROLE: Partner

Opportunity Identified:

Larimer County's watershed health groups monitor water quality, restore ecosystems, educate communities, and advocate for protective policies. The County aims to boost their efforts. This strategy will be closely coordinated with the Support Fuel Reduction Outcomes strategy.

Actions Identified:

- Partner and coordinate on projects with local watershed practitioners and other agencies for both public and private lands.
- Identify potential funding sources.
- With funding sources identified, consider a fund for small grants for watershed practitioners that might grow into a larger fund for urgent needs and innovative projects as funding is available.
- Help watershed practitioners amplify event messaging, if desired, through communication support, ensuring broad audience reach, and visibility.
- Support efforts to protect instream flows and collaborate with



TIMEFRAME: Ongoing

entities in Larimer County to enhance the ecological health of rivers, forests, and watersheds.

Why It's Important:

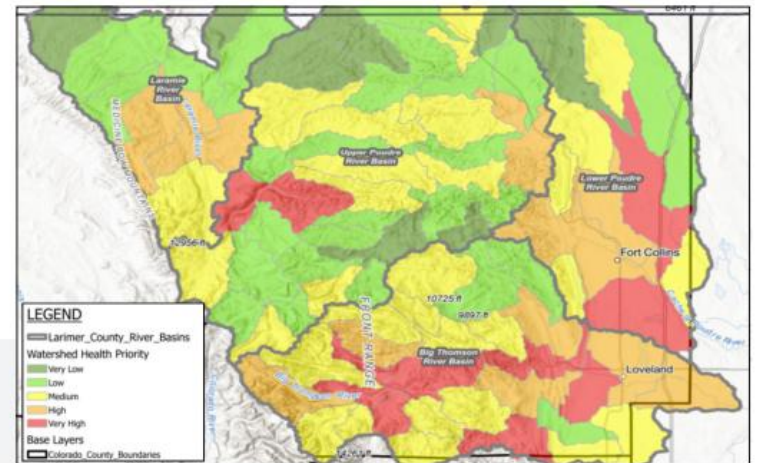
Healthy watersheds provide clean drinking water, support ecosystems, promote reduction of harmful erosion, and reduce the risk of flooding. They also filter pollutants, protecting water quality for humans and wildlife.

Desired Lasting Impact:

- Improved forest and watershed health.
- Ability to complete more projects to protect the County's watersheds.
- Increased audience reach and impact for education initiatives led by watershed practitioners in the County.

Where Could the Efforts Be Focused? ►►►

County resources will support projects and programs that address the needs of each watershed group and align with the County's watershed health priorities as well as the goals of the water plan.



The map above shows the priority related to challenges in watershed health (higher priority areas in orange and red). Projects in these watersheds will be prioritized when in line with County and watershed group goals.



STRATEGY LOGISTICS

Key Department(s)

Larimer County Department: TBD

Staff Commitment

- Time to support grant writing processes
- Time for Finance Department to create a new fund
- Time to support education efforts

Potential County Funding Mechanisms:

Various County Budgets and Grant Funding

SUMMARY	
Level of Total Investment	●●●○
Total Cost (\$)	●●●●○
Staffing Requirements	●●●○
Lasting Value	●●●●●
Partnership Opportunities	●●●●○
Plan Goals Addressed	Goal 1: Obj 1, Obj 2 Goal 2: Obj 1



POTENTIAL PARTNERS

NCWCD

Northern Colorado Water Conservancy District

City of Fort Collins

City of Loveland

LCD

Larimer Conservation District

CPRW

Coalition for the Poudre River Watershed

BTWC

Big Thompson Watershed Coalition

BTWHP

Big Thompson Watershed Health Partnership

EVWC

Estes Valley Watershed Coalition

The Nature Conservancy

Peaks to People



ADDITIONAL FUNDING OPPORTUNITIES

CWCB (Colorado Water Conservation Board)

- cwc.colorado.gov/funding/grants

FEMA (Federal Emergency Management Agency)

- fema.gov/grants

DOLA (Department of Local Affairs)

- dlq.colorado.gov/climate-resilience-challenge

BOR (Bureau of Reclamation)

- usbr.gov/watersmart/index.html

USFS (U.S. Forest Service)

- fs.usda.gov/working-with-us/grants

CSFS (Colorado State Forest Service)

- csfs.colostate.edu/grants

MITIGATION STRATEGY 2:

Support Fuel Reduction Outcomes

LARIMER COUNTY WATER PLAN

Strategy Tags: #WatershedHealth #Wildfire



COUNTY ROLE: Lead and/or Partner

Opportunity Identified:

While it is known that forest fires naturally occur and can be beneficial for forest ecology and health, uncontrolled and extreme fires are hazardous for nearby communities as they can have detrimental effects on water quality, supply, and flooding. Many organizations work to reduce fuels in vulnerable locations. The County seeks to selectively support and add value as appropriate to these organizations to improve coordination, funding, and documentation to boost the effectiveness of these efforts.

Actions Identified:

- Support effective mitigation treatment, including partner efforts on prescribed fires.
- Support grant writing and reporting efforts.
- Consider providing financial and labor resources to support projects involving mechanical and hand crew forest restoration treatments, recognizing that this would require significant additional resources.
- Partner with State and Federal Agencies to facilitate mitigation treatment.



TIMEFRAME: Ongoing

- Explore the possibility of supporting mitigation treatment for homes, or providing resources to ensure residents have access to information on the home ignition zones and creating defensible space.

Why It's Important:

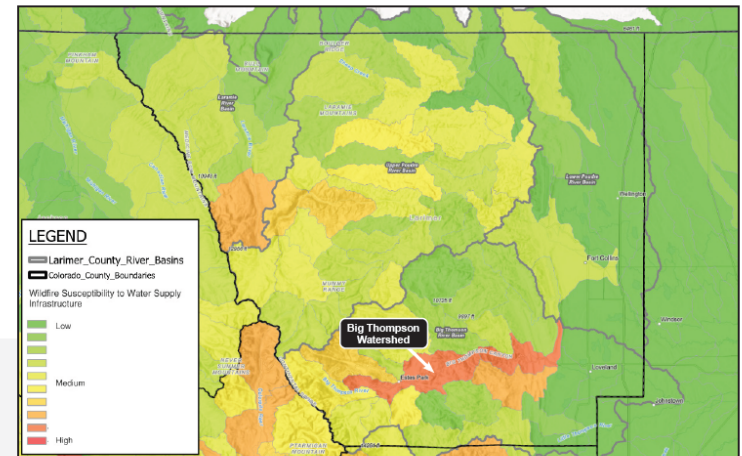
Fuel reduction removes flammable materials like dry vegetation, slowing wildfire spread and intensity, making fires easier to manage and less destructive. Better coordination between organizations will make fuel reduction efforts more impactful and use resources more efficiently.

Desired Lasting Impact:

- Improved forest and watershed health.
- Reduced frequency and severity of wildfires.
- Better coordination and data sharing between groups who contribute to fuel reduction efforts.

Where Could the Efforts Be Focused? >>>

The County will aim to support partner efforts in areas that pose the greatest threat to people, homes, and water supplies in the event of a wildfire. The Big Thompson Watershed is highlighted on the map as an area of higher



The map above shows CWCB data highlighting watersheds where wildfires have a higher potential to affect the water supply.



STRATEGY LOGISTICS

Key Department(s)

Larimer County Department: Office of Emergency Management, Dept. of Natural Resources, Larimer County Sheriff's office

Staff Commitment

- Time to coordinate with other entities
- Time to support grant writing process
- Potentially additional hires to execute projects

Potential County Funding Mechanisms:

County General Fund, Department Funds, and Grant Funds

SUMMARY

Level of Total Investment	●●●○○
Total Cost (\$)	●●●●●
Staffing Requirements	●●●○○
Lasting Value	●●●●●
Partnership Opportunities	●●●●●
Plan Goals Addressed	Goal 1: Obj 1, Obj 2 Goal 2: Obj 1



POTENTIAL PARTNERS

USFS

United States Forest Service

CSFS

Colorado State Forest Service

CFRI

Colorado Forest Restoration Institute

LCD

Larimer Conservation District

CPRW

Coalition for the Poudre River Watershed

BTWC

Big Thompson Watershed Coalition

BTWHP

Big Thompson Watershed Health Partnership

EVWC

Estes Valley Watershed Coalition

WRV

Wildlands Restoration Volunteers

LCSS

Larimer County Conservation Corps

Fire Districts

LCSSOES

Larimer County Sheriff's Office

LC Municipalities and providers



ADDITIONAL FUNDING OPPORTUNITIES

CODNR/CWCB (Colorado Department of Natural Resources/Colorado Water Conservation Board)

- cwcb.colorado.gov/funding/grants

FEMA (Federal Emergency Management Agency)

- fema.gov/grants

DOLA (Department of Local Affairs)

- dlg.colorado.gov/climate-resilience-challenge

Additional Partnering with CFRI (Colorado Forest Restoration Service)

- cfri.colostate.edu/projects/wildfire-risk-reduction-grant-program/

USFS (U.S. Forest Service)

- fs.usda.gov/working-with-us/grants

CSFS (Colorado State Forest Service)

- csfs.colostate.edu/grants



MITIGATION STRATEGY 4:
Water Security

LARIMER COUNTY WATER PLAN
Strategy Tags: #SupplyAndDemandPlanning
#LandUse

COUNTY ROLE: Lead

Opportunity Identified:

The County reviews water adequacy letters from the water provider for new developments to ensure proposed developments have secure water into the future. Due to the multiple water providers who operate in Larimer County, there is little consistency between what information is provided in the letters submitted. Feedback highlighted opportunities to improve water adequacy verification and ensure consistency between providers.

Actions Identified:

- Create consistency between water providers in the information provided to the County during the development review process.
- Involve water provider stakeholders in future zoning discussions. This could be through individual meetings or through a collaborative group.
- Identify approved but unbuilt projects affected by current water moratoriums and collaborate with providers to address the issue.
- Start conversation with research institutions like the United States Geological Survey and Colorado State University on

groundwater supply mapping and analysis.

Why It's Important:

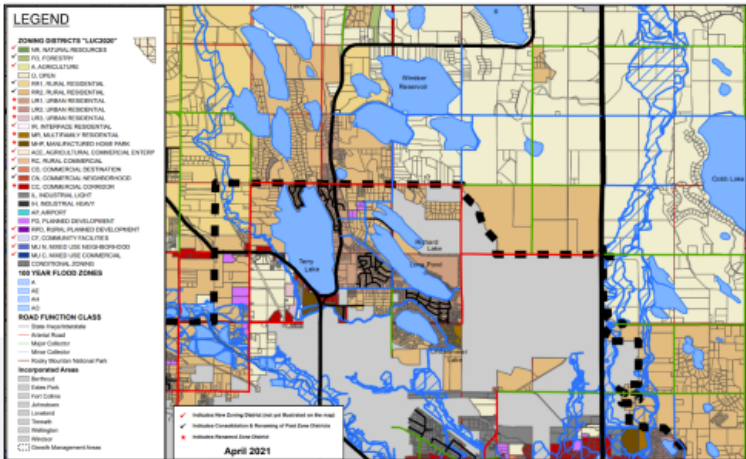
Water adequacy letters confirm that there is enough water for new developments, preventing strain on local resources and ensuring access without impacting existing users. Coordinating with water providers on changes to zoning is crucial to ensure adequate water for future developments.

Desired Lasting Impact:

- Better aligned land use plans with water needs.
- Improved coordination with water providers related to zoning changes.
- Alignment with state statutes around water adequacy requirements.

Where Could the Efforts Be Focused? >>>

This strategy will focus on unincorporated Larimer County, with emphasis on areas where Commercial, Industrial, and Rural Residential zoning makes future water use harder to predict.



The map above shows the Larimer County Zoning Map (2021). Some land use types in undeveloped areas (such as Commercial, Industrial, and Rural Residential) can make it difficult for water providers to predict how much water they will use in the future.

STRATEGY LOGISTICS

Key Department(s)

Larimer County Department: Community Development

Staff Commitment

- Create consistency between water providers in the information provided to the County during the development review process.
- Time to host more stakeholder meetings for changes in zoning.

Potential County Funding Mechanisms:

Community Development Budget (No Significant Funding Required)

SUMMARY	
Level of Total Investment	●●○○○
Total Cost (\$)	●○○○○
Staffing Requirements	●●○○○
Lasting Value	●●●●○
Partnership Opportunities	●●●○○
Plan Goals Addressed	Goal 2: Obj 1, Obj 2 Goal 4: Obj 1

POTENTIAL PARTNERS

Larimer County Water Providers

- USGS**
U.S. Geological Survey
- CSU**
Colorado State University

ADDITIONAL FUNDING OPPORTUNITIES

CWCB (Colorado Water Conservation Board)

- cwcb.colorado.gov/funding/grants

DOLA (Department of Local Affairs)

- dla.colorado.gov/climate-resilience-challenge
- dla.colorado.gov/community-development-block-grant-cdbg

BOR (Bureau of Reclamation)

- usbr.gov/watersmart/index.html

MITIGATION STRATEGY 5:

Protecting Water Supplies

LARIMER COUNTY WATER PLAN

Strategy Tags: #SupplyAndDemandPlanning
#WaterRights #WaterExports



COUNTY ROLE: Lead/Partner

Opportunity Identified:

As communities grow, so does the need for water. Stakeholder discussions stressed the importance of uniting to protect local water supplies from export. Recognizing many County residents rely on imported water, and no one can control the water market, the County still aims to work together through agreements and public statements to make their desires to safeguard local resources known.

Actions Identified:

- Draft a statement with regional input to protect Northern Colorado water supplies.
- Educate the public on reservoir project benefits, challenges, and review process to foster informed discussions.
- Explore funding opportunities through grants or legislative means to help protect local water supplies.
- Explore ways to permanently preserve existing land use and



TIMEFRAME: 1-2 Years

tools to keep water tied to the land - considering several ways to discourage dry up covenants.

- Encourage water providers in their pursuit of diverse and resilient water supply portfolios.
- Consider opportunities for the County to facilitate for stakeholders to meet regularly to discuss water supply topics.

Why It's Important:

Showing our unified commitment and desire to protect local water supplies helps our residents and outside entities understand our concerns and our limitations when it comes to water rights law. The County and its residents need adequate water in the region for agriculture, healthy environments and river systems, and for livable communities.

Desired Lasting Impact:

- Greater public and external awareness of the County's commitment to local water protection and the County's role in water supply projects.
- Enhanced unity among providers and County entities in safeguarding water resources.

Where Could the Efforts Be Focused? ▼▼▼

This strategy will focus on coordinating with Larimer County water providers, County-wide public education, and discussions with agricultural landowners.



STRATEGY LOGISTICS

Key Department(s)

Larimer County Department: TBD (Natural Resources and other County departments)

Staff Commitment

Time to coordinate with water providers and partners

Potential County Funding Mechanisms:

No Significant Funding Required

SUMMARY	
Level of Total Investment	●●●○○
Total Cost (\$)	●○○○○
Staffing Requirements	●●●○○
Lasting Value	●●●○○
Partnership Opportunities	●●●○○
Plan Goals Addressed	Goal 2: Obj 1 Goal 4: Obj 5



POTENTIAL PARTNERS

NCWCD

Northern Colorado Water Conservancy District

Other Larimer County Water Providers

Various Stakeholders with Ties to the Agricultural Community



ADDITIONAL FUNDING OPPORTUNITIES

Additional Funding Unlikely Outside of Local Partners

MITIGATION STRATEGY 6: Improve Water Efficiency and Conservation

LARIMER COUNTY WATER PLAN

Strategy Tags: #WaterConservation #WaterRights
#Agriculture #WatershedHealth #Habitat



COUNTY ROLE: Lead

Opportunity Identified:

Discussions revealed opportunities to update the County's Land Use and Building Codes to enhance water efficiency in new developments and to explore opportunities to encourage water efficient landscaping in existing developments.

Actions Identified:

- Update the Land Use Code to improve water efficiency in landscaping in new developments and ensure conformance with State requirements.
- Update the Building Codes to improve water efficiency in water fixtures and appliances. Work with Health and Environment to explore the possibility of allowing gray-water systems.

- Look to implement, support, and connect residents to turf replacement and water-wise incentive programs.

Why It's Important:

Setting rules for efficient water use helps ensure a steady water supply, reduces environmental impact, and supports long-term management of water resources.

Desired Lasting Impact:

- Water resources that support rivers, wetlands and associated riparian habitats, and agricultural lands will be protected, maintained, and enhanced.
- Future developments will use less water.
- Existing developments will use less water.
- Larimer County becomes a leader in responsible water use.

Where Could the Efforts Be Focused? ▼▼▼

This strategy will focus on unincorporated areas slated for future development and areas where water efficiency could be improved in existing developments.



TIMEFRAME: 1-6 Years



STRATEGY LOGISTICS

Key Department(s)

Larimer County Department: Community Development

Staff Commitment

- Time to coordinate with municipalities
- Time to research best practices

Potential County Funding Mechanisms:

Grant Funded with potential matching help from departments above

SUMMARY	
Level of Total Investment	●●●●○
Total Cost (\$)	●●●●○
Staffing Requirements	●●○○○
Lasting Value	●●●●●
Partnership Opportunities	●●●●○
Plan Goals Addressed	Goal 4: Obj 1, Obj 4 Goal 5: Obj 1, Obj 2



POTENTIAL PARTNERS

Neighboring Municipalities & Water Providers

Resource Central

NCWCD

Northern Colorado Water Conservancy District



ADDITIONAL FUNDING OPPORTUNITIES

CWCB (Colorado Water Conservation Board)

- cwcb.colorado.gov/funding/grants

DOLA (Department of Local Affairs)

- dla.colorado.gov/climate-resilience-challenge
- dla.colorado.gov/community-development-block-grant-cdbg

BOR (Bureau of Reclamation)

- usbr.gov/watersmart/index.html

MITIGATION STRATEGY 7:

Protecting Water To Promote Viable Agricultural Economy

LARIMER COUNTY WATER PLAN

Strategy Tags: #ProtectingAgriculture
#WaterConservation #WaterEfficiency



COUNTY ROLE: Lead

Opportunity Identified:

Opportunities were identified to create and improve education materials for communities in close proximity to agriculture to understand daily needs and processes for farmers. This coupled with other efforts could help residents understand the benefits of keeping water rights tied to the land they supply.

Actions Identified:

- Work with Larimer County Extension and other partners to educate urban users and foster informative discussions on agriculture operations, water use, and daily needs/ processes to promote mutual understanding and collaboration.
- Explore several tools to tie water to land. Maintaining viability of the agricultural economy.
- Work with farmers to increase water conservation while

addressing limitations associated with water rights.

- Identify actions or strategies to help ditch companies improve infrastructure to reduce water loss and improve efficiency.

Why It's Important:

Strengthening relationships between suburban and agricultural communities reduces inconveniences for both sides. This effort could help protect Larimer County's agricultural heritage and economy by improving the likelihood of keeping the water tied to agricultural land.

Desired Lasting Impact:

- Stronger relationships between urban and agricultural communities.
- Fewer disruptions to farming operations.
- Improved viability of the County's agricultural economy through a higher likelihood of keeping water tied to agricultural land.

Where Could the Efforts Be Focused? ▼▼▼

This strategy will focus on areas where urban development is in close proximity to agricultural areas throughout the County.



This photo illustrates how farmers may face pressures from urban expansion including traffic and nearby development. It also shows how natural buffers are one possible tool that can be used to help reduce some of those pressures.



TIMEFRAME: 3-10 Years



STRATEGY LOGISTICS

Key Department(s)

Larimer County Department: TBD

Staff Commitment

- Time to develop and implement education campaign
- Time to network among stakeholders to ensure attendance at discussions and meetings
- Time to work on implications and desires of stakeholders to develop districts

Potential County Funding Mechanisms:

Grant Funded

SUMMARY

Level of Total Investment	●●●●○
Total Cost (\$)	●●●●○
Staffing Requirements	●●●●○
Lasting Value	●●●●○
Partnership Opportunities	●●○○○
Plan Goals Addressed	Goal 2: Obj 1 Goal 3: Obj 2 Goal 4: Obj 1, 3 & 4



POTENTIAL PARTNERS

LCD

Larimer Conservation District

NRCS

Natural Resources Conservation Service

CSU Extension

Colorado State University Extension

Colorado Water Trust

Colorado Open Lands

Other relevant municipalities and stakeholders



ADDITIONAL FUNDING OPPORTUNITIES

USDA (United States Department of Agriculture)

- [usda.gov/topics/farming/grants-and-loans](https://www.usda.gov/topics/farming/grants-and-loans)

CWCB (Colorado Water Conservation Board)

- [cwcb.colorado.gov/funding/grants](https://www.cwcb.colorado.gov/funding/grants)

DOLA (Department of Local Affairs)

- dla.colorado.gov/climate-resilience-challenge
- dla.colorado.gov/community-development-block-grant-cdbg

BOR (Bureau of Reclamation)

- [usbr.gov/watersmart/index.html](https://www.usbr.gov/watersmart/index.html)

NRCS (Natural Resources Conservation Service)

- [nrcs.usda.gov/programs-initiatives/cig-conservation-innovation-grants](https://www.nrcs.usda.gov/programs-initiatives/cig-conservation-innovation-grants)

MITIGATION STRATEGY 8:

Growing Water Smart

LARIMER COUNTY WATER PLAN

Strategy Tags: #WaterConservation
#WaterEfficiency #SupplyAndDemandPlanning



COUNTY ROLE: Lead

Opportunity Identified:

Larimer County was invited to participate in the growing water smart workshop beginning fall of 2024.

Actions Identified:

- Follow through on the actions identified in the 2024 workshop and continue the conversation to help rural and urbanizing communities integrate water and land use planning to better ensure their sustainability and resilience.
- Explore the possibility of attending the workshop again in the future to advance strategies related to watershed health and convene relevant partners.
- Follow-up on the grant opportunities identified in the 2024 workshop.
- Utilize grant funding and Strategic Plan funding to ensure internal capacity to implement the Water Plan.



TIMEFRAME: 3-10 Years

Why It's Important:

This workshop will help the County learn more about best practices for water management and conservation as our communities continue to grow.

Desired Lasting Impact:

- Growing water-smart will help the County and its residents use water wisely, reduce waste, protect resources, ensure supply, lower costs, and support ecosystems for long-term sustainability.
- Potential to attend the workshop again to advance strategies related to watershed health and continue the conversation with additional partners.

Where Could the Efforts Be Focused? >>>

This strategy will educate County staff on practices, programs, and projects that could benefit the entire County as its communities continue to expand and require more water.



STRATEGY LOGISTICS

Key Department(s)

Larimer County Department: Community Development

Staff Commitment

- Time to attend workshop
- Time to coordinate with neighboring communities on workshop and initiatives that may come out of it.

Potential County Funding Mechanisms:

No Significant Funding Required

SUMMARY

Level of Total Investment	● ○ ○ ○ ○
Total Cost (\$)	● ○ ○ ○ ○
Staffing Requirements	● ● ● ● ○
Lasting Value	● ● ● ● ○
Partnership Opportunities	● ● ● ○ ○
Plan Goals Addressed	Goal 4: Obj 1-5 Goal 5: Obj 1 & 2



POTENTIAL PARTNERS

NCWCD

Northern Colorado Water Conservancy District

Municipalities in Unincorporated Larimer County



ADDITIONAL FUNDING OPPORTUNITIES

No Funding Needed for Workshop. Funding for Follow-up Activities Could Include:

CWCB (Colorado Water Conservation Board)

- cwcb.colorado.gov/funding/grants

DOLA (Department of Local Affairs)

- dlg.colorado.gov/climate-resilience-challenge
- dlg.colorado.gov/community-development-block-grant-cdbg

BOR (Bureau of Reclamation)

- usbr.gov/watersmart/index.html

MITIGATION STRATEGY 9:

Public Education & Resource Clearinghouse

LARIMER COUNTY WATER PLAN

Strategy Tags: #Education #PublicEducation
#Resources



COUNTY ROLE: Lead and/or Partner

Opportunity Identified:

Stakeholder discussions helped the County identify programs and internal initiatives to enhance public water education and provide a resource hub for residents - partnered with Colorado Water Center water education series.

Actions Identified:

EDUCATION:

- Identify staffing resources.
- Help expand water education on sources, rights, and conservation. Share educational resources on the links between wildfire and water management, and conservation campaign materials.
- Explore supporting Project WET (Water Education Today) and other education efforts.
- Consider continuing Water Education Series.



TIMEFRAME: 1-2 Years

- Consider engaging in the Regional Water Messaging Initiative facilitated by Northern Colorado Water Conservancy District.

RESOURCE CLEARINGHOUSE:

- Create an interactive map of water provider service areas.
- Guide the public to local water conservation resources.
- Offer information for newcomers on the County website.

Why It's Important:

The public has a huge part to play in protecting our water. Education for children and adults leads to better decisions and more passionate and informed communities.

Desired Lasting Impact:

- Better-informed decisions and engagement.
- Increased passion for protecting water and the environment among people of all ages.
- Stronger partnerships with water education organizations.

Where Could the Efforts Be Focused? ▼▼▼

This strategy will benefit the entire County but could also concentrate education efforts on identified focus areas based on the topic and need.



STRATEGY LOGISTICS

Key Department(s)

Larimer County Department: TBD

Staff Commitment

- Time to support networking with schools
- Time to develop resources and website hub
- Potential time for GIS staff to develop portal

Potential County Funding Mechanisms:

County Budget Matched with Grant Funding

SUMMARY

Level of Total Investment	●●●○○
Total Cost (\$)	●●○○○
Staffing Requirements	●●●○○
Lasting Value	●●●○○
Partnership Opportunities	●●●○○
Plan Goals Addressed	Goal 2: Obj 2 Goal 3: Obj 1 & 2 Goal 5: Obj 2



POTENTIAL PARTNERS

CWC

Colorado Water Center (Project WET)

CSU

Colorado State University

NCWCD

Northern Colorado Water Conservancy District

Resource Central

WEC

Water Education Colorado

Local Water Providers



ADDITIONAL FUNDING OPPORTUNITIES

CWCB (Colorado Water Conservation Board)

- cwcb.colorado.gov/funding/grants

MITIGATION STRATEGY 10:
Address Water Quality and Efficiency in Disproportionately Impacted Communities

LARIMER COUNTY WATER PLAN
Strategy Tags: #Infrastructure #MobileHomeParks
#DisproportionatelyImpactedCommunities



COUNTY ROLE: Partner

Opportunity Identified:

Although the County has limited authority over water infrastructure in under-served communities, it will still promote water efficiency upgrades to lower resident water bills and support infrastructure projects when possible.

Actions Identified:

- Collaborate on efforts in incorporated areas and help to coordinate initiatives in unincorporated Larimer County.
- Promote existing programs to offer discounted or free water fixture upgrades to reduce resident water bills.
- Promote and support existing free water quality testing programs.
- Consider promoting water loss control and leak detection for vulnerable communities.



TIMEFRAME: 3-10 Years

Why It's Important:

Many vulnerable communities rely on outdated water infrastructure that can leak and raise water bills. In some communities, these systems are privately owned and not managed by water providers, making maintenance difficult. It's important to help reduce the financial burden of the residents anyway possible.

Desired Lasting Impact:

- Some reduction in water bills for park residents through water efficiency practices.
- Stronger partnerships to address the needs of these communities.

Where Could the Efforts Be Focused? >>>

This strategy will target areas identified as vulnerable by the EPA's Enviroscreen database.



STRATEGY LOGISTICS

Key Department(s)

Larimer County Department: TBD

Staff Commitment

- Time to promote and educate residents on efficiency programs
- Time to coordinate with water providers as opportunities to support arise

Potential County Funding Mechanisms:

No Significant Funding Required

SUMMARY	
Level of Total Investment	●●●○○
Total Cost (\$)	●●○○○
Staffing Requirements	●●○○○
Lasting Value	●●●○○
Partnership Opportunities	●●●○○
Plan Goals Addressed	Goal 2: Obj 1 Goal 4: Obj 2 Goal 5: Obj 1



POTENTIAL PARTNERS

CWC

Colorado Water Center

NCWCD

Northern Colorado Water Conservancy District

Local Water Providers

Housing Advocacy Groups

DOLA

Department of Local Affairs

CDPHE

Colorado Department of Public Health & Environment



ADDITIONAL FUNDING OPPORTUNITIES

CDPHE (Colorado Department of Public Health & Environment)

- [cwcb.colorado.gov/funding/grants](https://www.cwcb.colorado.gov/funding/grants)

DOLA (Department of Local Affairs)

- dla.colorado.gov/climate-resilience-challenge

CWCB (Colorado Water Conservation Board)

- [cwcb.colorado.gov/funding/grants](https://www.cwcb.colorado.gov/funding/grants)

LOOKING FORWARD

- **Begin Implementation:** Roll out priority strategies from the Water Master Plan.
- **Expand Partnerships:** Strengthen collaboration.



Please find all materials
online at:



larimer.gov/planning/water

THANK YOU – QUESTIONS?

Danielle Reimanis

LCwaterplan@co.larimer.co.us



larimer.gov/planning/water



ACTIVITY TIME



1. I believe water is a key issue in Northern Colorado and should be at the forefront of local planning and decision-making.

2. I believe I can make a difference by saving water at home.

3. I have what I need—like info or tools—to use water wisely at home or work.

4. This event helped me better understand water issues in Larimer County.

5. A healthy watershed matters—even if I live in town.

6. Water in Colorado is a tricky subject.

7. What I flush or pour down the drain does not affect local rivers and streams.

8. I've run into water-related limits when trying to use my property.

9. I believe water's high value in Colorado makes housing more expensive.

10. I assume the water situation will take care of itself eventually.