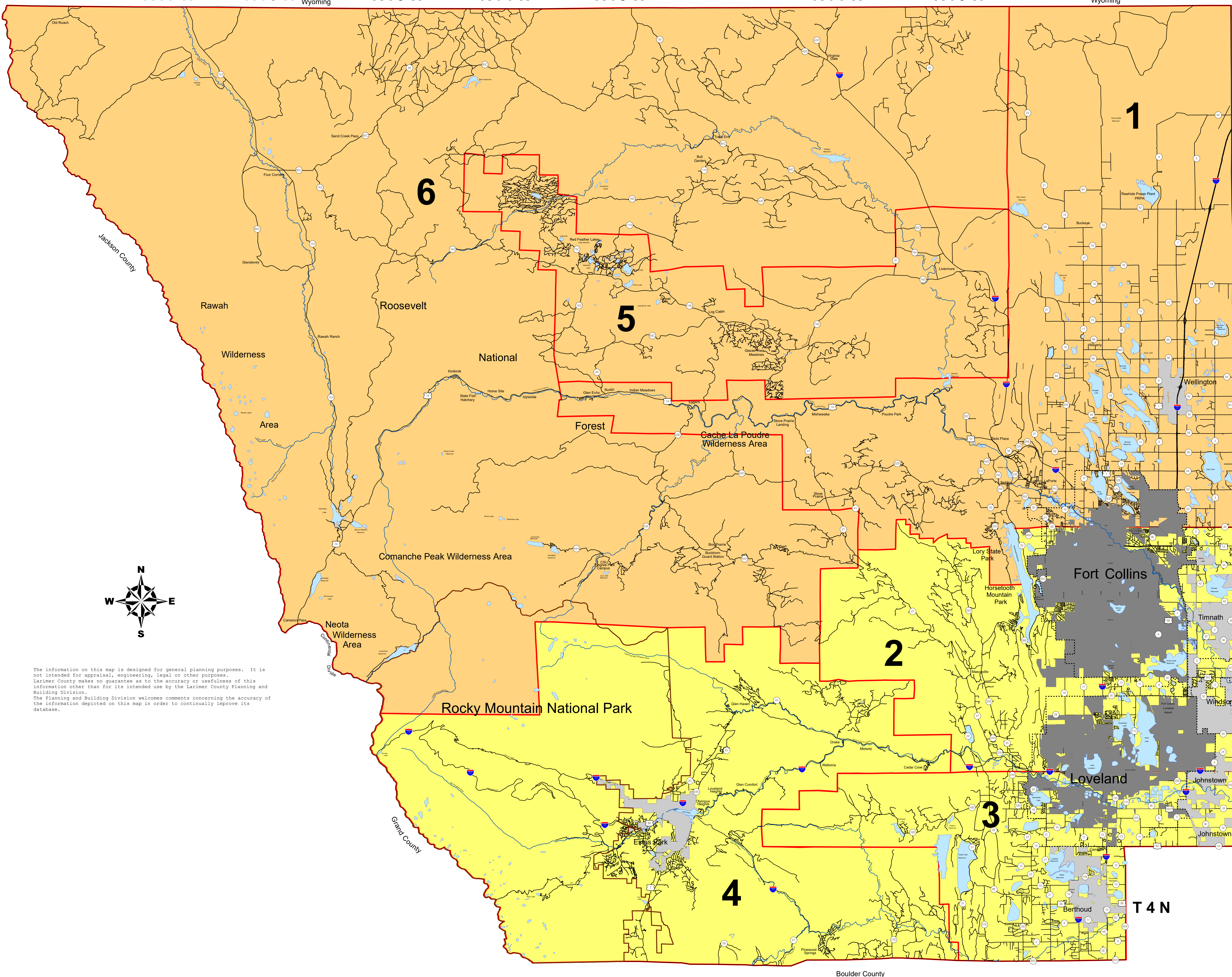


Larimer County Electrical Inspection Districts Map

R 78 W R 77 W R 76 W Wyoming R 75 W R 74 W R 73 W R 72 W R 71 W R 70 W R 69 W Wyoming R 68 W



T 12 N
T 11 N
T 10 N
T 9 N
T 8 N
T 7 N
T 6 N
T 5 N
T 4 N

Legend

Electrical Inspection Districts Names

- 1 Fort Collins North/Wellington
- 5 Red Feather Lakes/Livermore
- 6 Northern Mountains
- 2 Fort Collins South/Loveland/Masonville
- 3 Berthoud
- 4 Estes Park/Drake

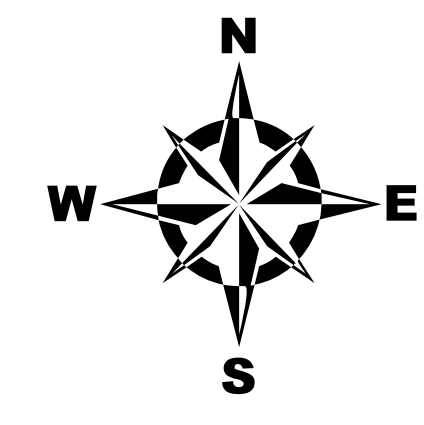
Roads

- Roads
- Rocky Mountain National Park
- ⋯ Growth Management Areas

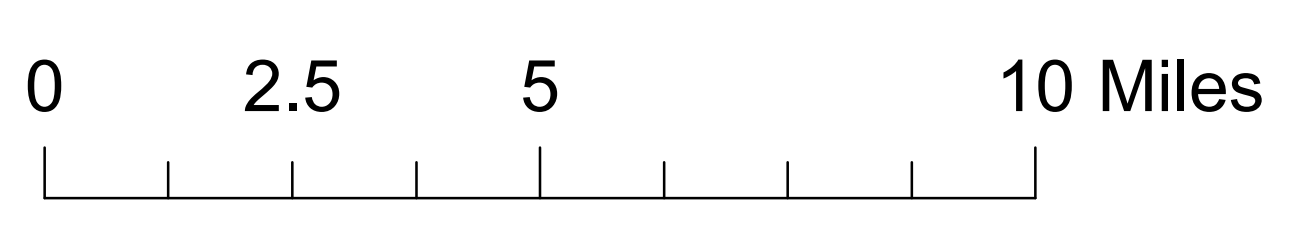
Incorporated Areas

Cities and Towns

- Berthoud
- Estes Park
- Fort Collins
- Johnstown
- Loveland
- Timnath
- Wellington
- Windsor



The information on this map is designed for general planning purposes. It is not intended for appraisal, engineering, legal, or other purposes. Larimer County makes no guarantee as to the accuracy or usefulness of this information other than for its intended use by the Larimer County Planning and Building Division. The Planning and Building Division welcomes comments concerning the accuracy of the information depicted on this map in order to continually improve its database.



Note:
 Inspection Areas 1,5,6 is Inspector Rod Roberts (970)498-7715 and Areas 2,3,4 is Inspector Jim Johnson (970)498-7713.
 Areas are generally inspected on the following schedule: 1,2,and 4 on M,W,F and 3,5 and 6 on T/Th.
 Although we try to perform the inspections on these scheduled days, the inspector may take up to 2 business days to complete the inspection.

July 2020