



HUMAN RESOURCES

200 W Oak Street, Suite 3200, Fort Collins | www.larimer.org/hr



Bridget Paris
Human Resources Director
Email: bparis@larimer.org

RECRUITING

If you have questions about:

- Recruiting
- Career Opportunities
- Onboarding

www.larimer.org/hr/careers
Email: recruiting@larimer.org



Jessica Villasenor
Human Resources Coordinator



Annie Bell
Human Resources Technician



Sara Rice
Human Resources Technician

PAYROLL

If you have questions about:

- Payroll issues
- Tax deductions
- Leave Accruals
- Salary Changes

www.larimer.org/hr/payroll
Email: hr_etime@larimer.org



Amy O'Donnell
Payroll Manager



Brenda Haarmann
Payroll Specialist Lead



Tommie Anne Ruble
Payroll Specialist



LeAnn Clark
Payroll Specialist



Nikki McNeill
Payroll Specialist

If you have questions about:

- Employee Recognition Programs
- Any miscellaneous needs.

Phone: (970) 498-5970
Email: humanresources@larimer.org



Nick Cole
Business Ops Manager



Katie Lewis
Business Ops Coordinator



Valerie Douglas
Administrative Assistant II

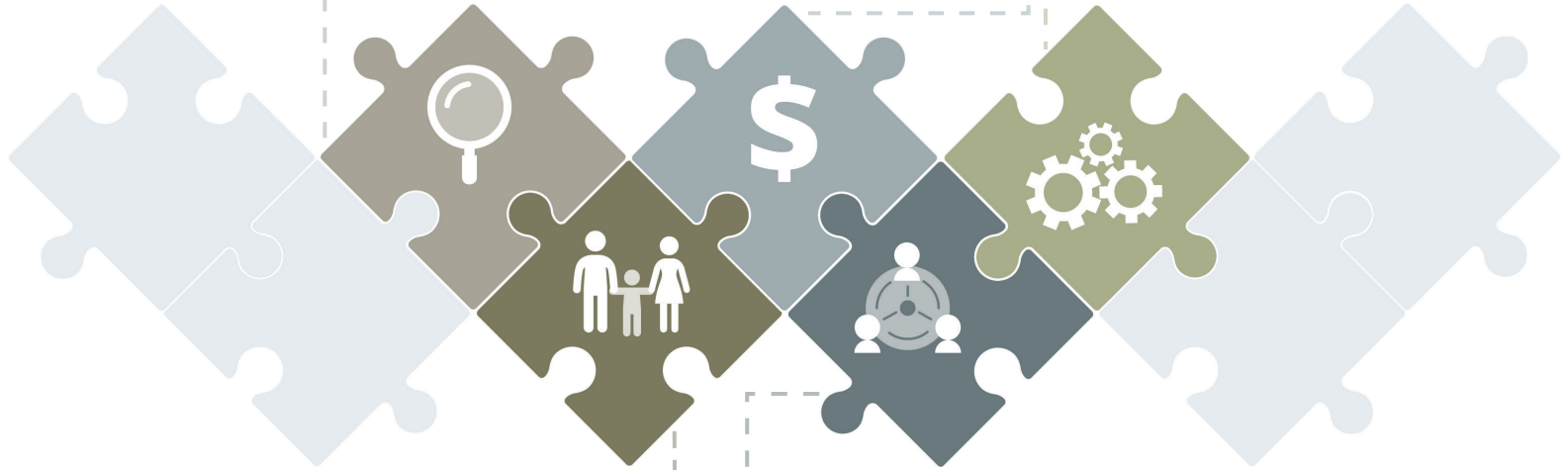


Judy Shimkus
Application Support Spec



Jennifer Glover
Communication & Media Spec

ADMIN



BENEFITS

If you have questions about:

- Insurance Vendors
- Enrollment
- Status Changes
- Insurance Coverage
- Logging into Navigate
- Rewards Points
- Wellness Campaigns
- Biometrics
- Contribution Amounts
- Vesting
- Beneficiary Changes
- Wellness Clinic

www.larimer.org/hr/benefits
Email: hr_benefits@larimer.org



Jennifer Whitener
Benefits Manager



Rachel Sporleder
Benefits Team Lead



Andrea Bilderback
Health Promotion/ Outreach Specialist



Kathy Harris
Benefits Specialist



Kelly Wachtman
Benefits Technician

If you have questions about:

- Compensation
- Performance Management
- Policy Interpretation
- Supervisor Training
- Professional and Personal Development
- Compliance Requirements
- Team Building
- New Employee Training
- FMLA
- Training and Development

www.larimer.org/hr/employee-relations



Christine Kuehnst
Employee Relations Manager



Nicole Berg
Inclusion Administrator



Jennifer Zwiefka
Senior Human Resources Generalist



Eileen Brittingham
Senior Human Resources Generalist



Lisa Wempen
Human Resources Generalist



Marcy Hamilton
Application Support Technician



Erin Schmidt
Leave Specialist

EMPLOYEE RELATIONS