

LARIMER COUNTY BUDGET OFFICE



# AMERICAN RESCUE PLAN ACT (ARPA) UPDATE

SEPTEMBER 12<sup>th</sup>, 2022



# Agenda

1. Regional Projects Update
2. Landlord Engagement Grant Match
3. Broadband Update
4. Immediate Needs Grants Financial Update
5. Immediate Needs Grants Stories
6. State & Local Fiscal Recovery Fund (SLFRF) Financial Update
7. Inflation Reduction Act Update
8. Next Steps
9. Questions and Discussion

## Regional Projects Update

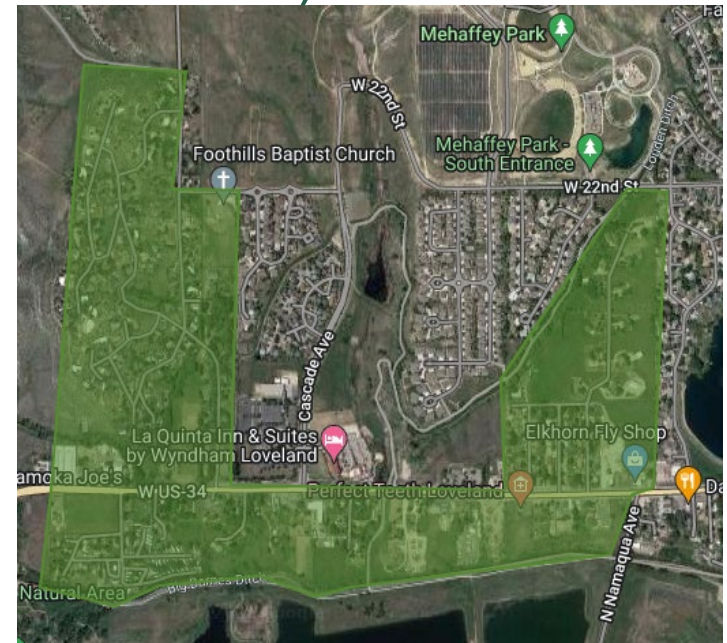
- Next steps for County support – 13 projects
- 8 of 13 preparatory meetings held with lead agencies
- Target all Resolution documents executed by year's end
- Legislative review for State ARPA grants and monitor for release of Requests For Proposals from various State offices
- Regional elected officials and legislative representatives showcase event next week

# Landlord Engagement Pilot Grant Match

- Project in alignment with Root Policy Recommendation #8
  - *Consider Eviction Prevention and Renter Protections*
- Emergency Rental Assistance Program (ERAP) cliff effect
- Total projected Budget for 3-year pilot: \$825,192 (\$275,064/yr.)
- Minimum match needed to proceed: \$206,298 (\$68,766/yr.)
- Project meets ARPA spending criteria and timeline
- 3 years to gather data and determine long term investment

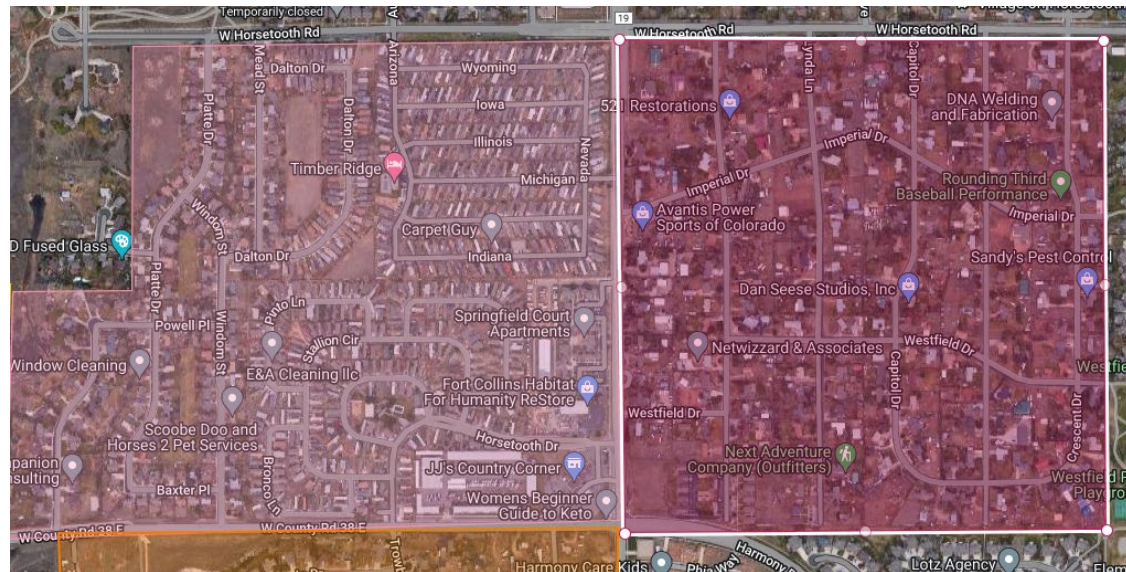
# Broadband Update – Active Approved Projects

- Poudre Valley Rural Electric Association (PVREA) – Livermore to Crystal Lakes Fiber (\$1.3M)
  - Completed contracting with PVREA
  - Construction is in progress (~21 Miles of fiber)
- Loveland Pulse
  - Sylvan Dale Area (\$500K)
  - Negotiating IGA (\$5.25M)
    - Devils Backbone Area
    - North 57<sup>th</sup> of Lago Vista
    - Ptarmigan Area



# Broadband Update – Active Projects

- Fort Collins Connexion (\$4.6M)
  - Negotiating IGA
    - Northwest Harmony/Taft (Springfield)
    - Northeast Harmon/Taft (Imperial Estates)



# Broadband - USDA Reconnect Grant – Red Feather

- Project not selected for 100% Grant
  - Submitted a Strong Eligible Application
  - Scored 75 – U.S. Dept of Agriculture (USDA) Funded Projects @ 80+
  - USDA gave 0 points for “Level of Existing Service”
    - Our speed test data was not enough to override score that services above 25/3 were available in the area
  - Need to determine strategy in resubmitting
    - Change our project area to eliminate “served” areas
    - Consider other programs such as the less competitive 50/50 loan/grant program

## Broadband – Estes DOLA Grant

- Colorado Dept. of Local Affairs (DOLA) Awarded Estes Park for areas of Larimer County for Broadband Design
  - Awarded \$105,000 grant – Asking Larimer County for 25% match (\$26,250)
  - Grant will fund detailed engineering design services for Pinewood Springs and Glen Haven
  - Design required for future grant applications
  - Submitting proposal to Colorado Dept. of Transportation for fiber on HWY-36



# Broadband – Future Partnership Opportunities

- PVREA – Fiber from Glacier View to Rustic
  - Opportunity to extend county backbone to Rustic
  - Compete for future grants to bring improved communications and connectivity to the upper Poudre Canyon
  - Project Estimated Cost Share = **\$800K**
- Colorado State University (CSU) – Mountain Campus
  - Partner with CSU to extend fiber from Rustic to Pingree
  - Compete for future grants to bring improved connectivity to the CSU campus and surrounding community
  - Project Estimated Cost Share = **\$600K**

## Broadband – Affordable Connectivity

- Coordinating marketing campaign to increase participation to Affordable Connectivity Program (ACP) in Larimer County
- Providing small grant to Estes Park Trailblazer from Broadband operating to complete ACP paperwork with the Federal Communication Commission
- Hosting a regional collaboration meeting to align goals for digital navigator/digital equity programs

# Immediate Needs Grants Financial Update

- Immediate Needs Grant Progress:
  - \$2.05 million in reimbursements requested
  - \$2+ million in funding distributed\*
  - 31 projects fully reimbursed\*
  - Drinking water project with Fort Collins to be re-started.

\* = *As of September 7, 2022*

# Immediate Needs Grants Stories

- Staff met on September 1<sup>st</sup> to develop materials to tell “story” of Immediate Needs Grants
- Several grantees have offered stories & data
- Staff will build webpage and issue news release

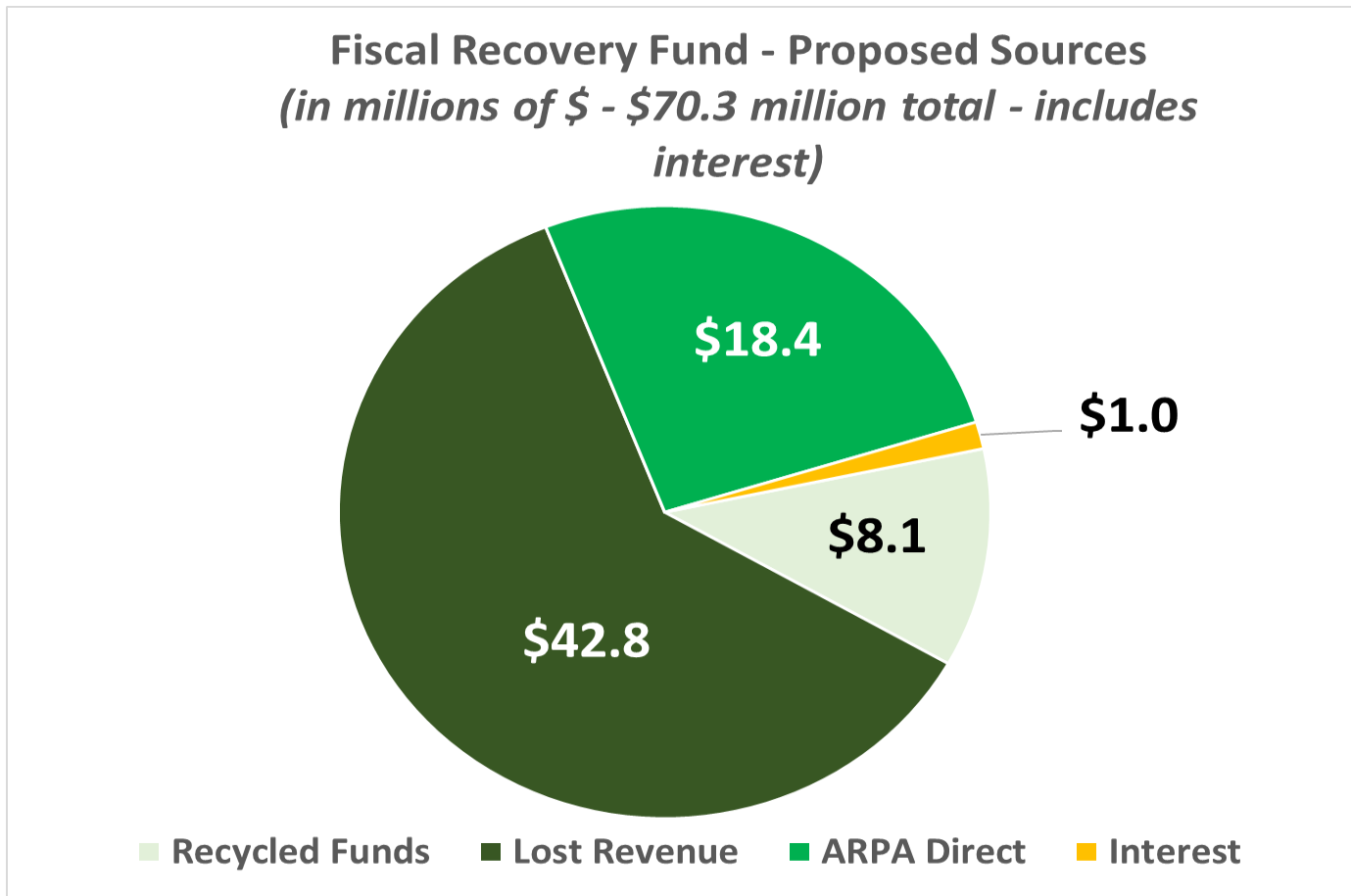
## Examples:

- Vindeket Foods purchased a 20-foot refrigerated truck, enabling grantee to “rescue” more perishable food for donation
- McBackpack provided 17,340 meals & snacks for students at 36 Poudre School District schools

# Immediate Needs Grants Stories

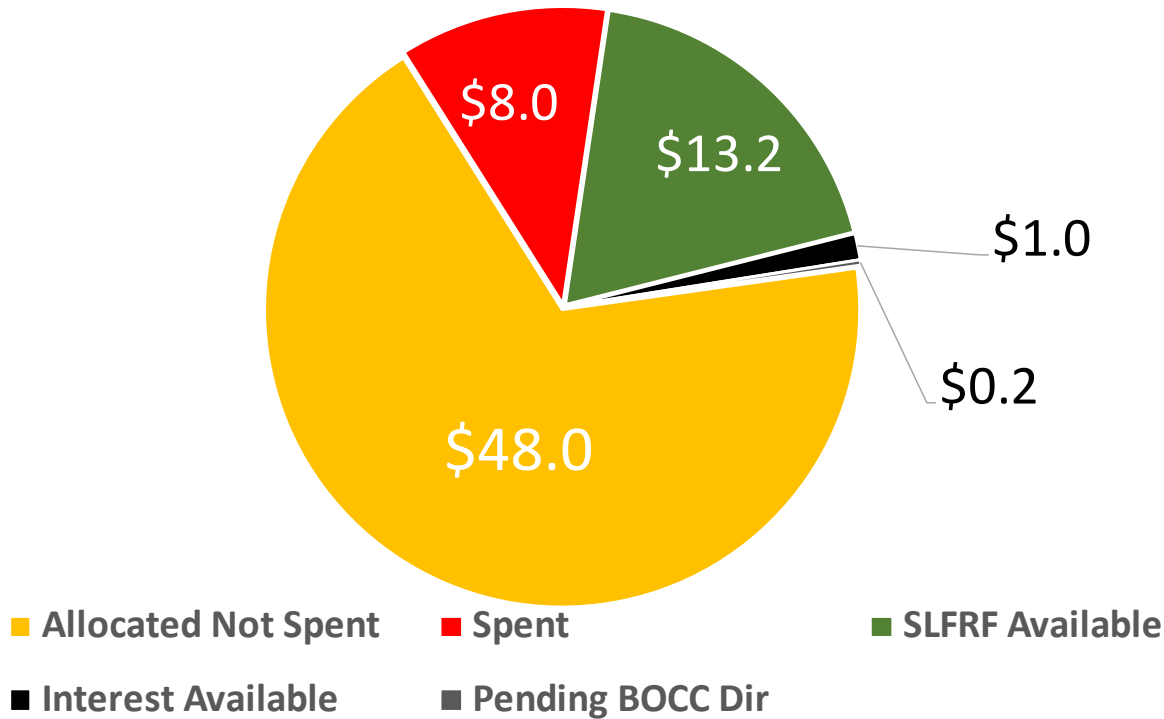
- The Homeward Alliance provided 34 health events that have provided services such as dentistry, testing and screening, immunizations, and others to nearly 400 individuals experiencing homelessness or newly-housed. It has also provided 150+ rides to medical appointments.
- The Salvation Army of Loveland he Salvation Army of Loveland used Larimer County Immediate Needs Grant funds for the Respite Care Program. Respite Care Program provides emergency hotel lodging, food, and transportation to people experiencing homelessness.
- Teaching Tree Early Childhood Learning Center was able to operate safely when COVID was an issue early in the year and has since been able to expand operating hours.

# SLFRF Financial Update



# SLFRF Financial Update

**Fiscal Recovery Fund - Uses & Available**  
*(in millions of \$ - \$70.3 million total - includes interest)*



Larimer County has:

- Spent 11.5% of its Allocation
- Allocated & spent 80.7% of its allocation
- (Not including interest)



# SLFRF Financial Update

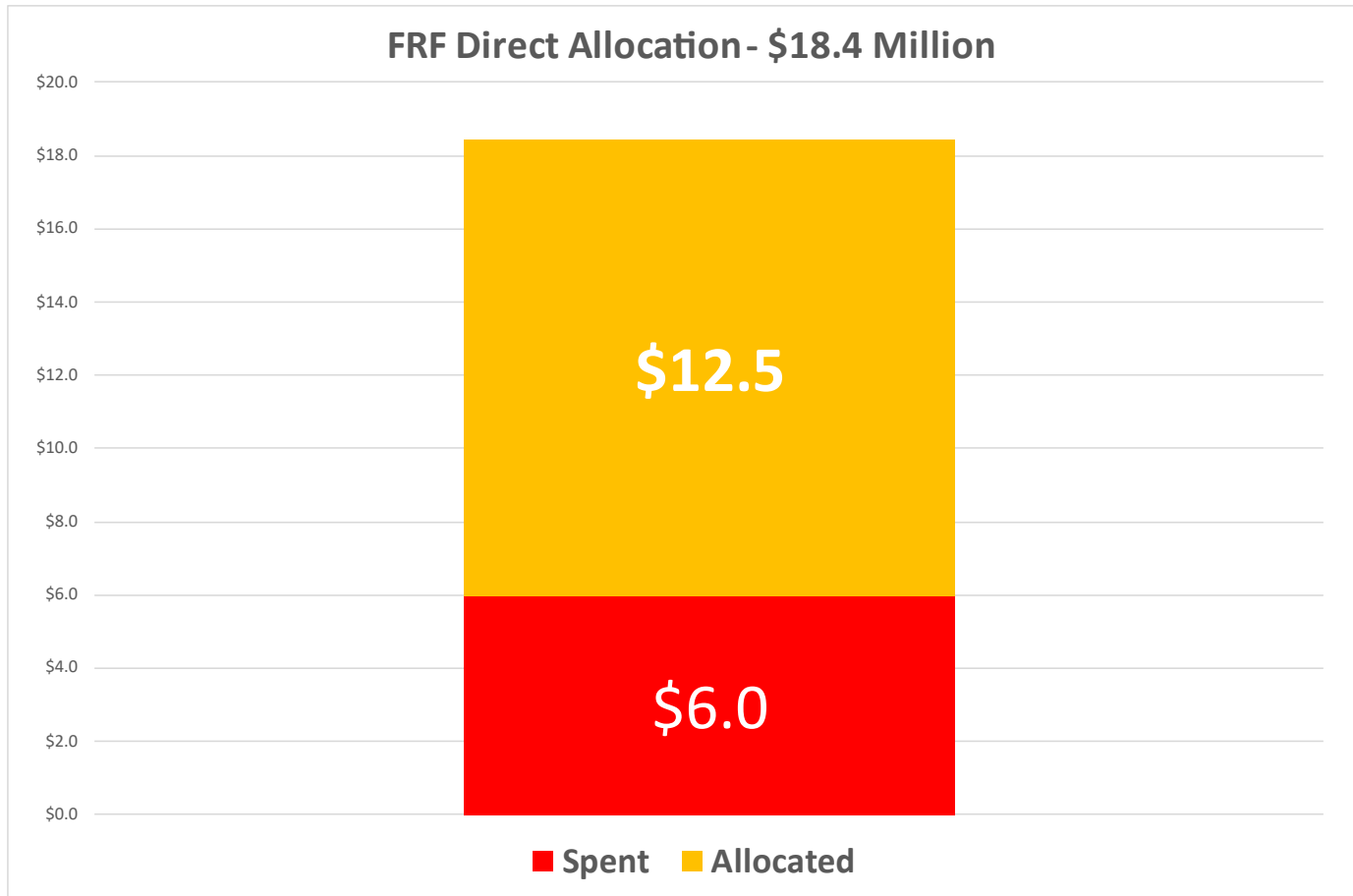
## Year-to-date Non-Recyclable Expenses\*:

Category	Item	Amount Spent YTD
Supplemental Pay	Public Safety Supplemental & Retention Pay	\$1,785,000
Economic Impacts	Immediate Needs Grants	\$1,656,000
Public Safety Payroll	Comm Justice Alternatives Payroll	\$1,438,000
Government Operations	Comm Justice Alternatives Revenue Deficit	\$1,000,000
Economic Impacts	Parklane Mobile Home Park Contribution	\$1,000,000
Health Impacts	Immediate Needs Grants	\$354,428
Health Impacts	Jail Inmate Medical Care	\$248,267
Public Health Payroll	Health Department Payroll	\$122,654
All Others		\$348,460
<b>TOTAL</b>		<b>\$7,952,809</b>

\* = As of September 7, 2022

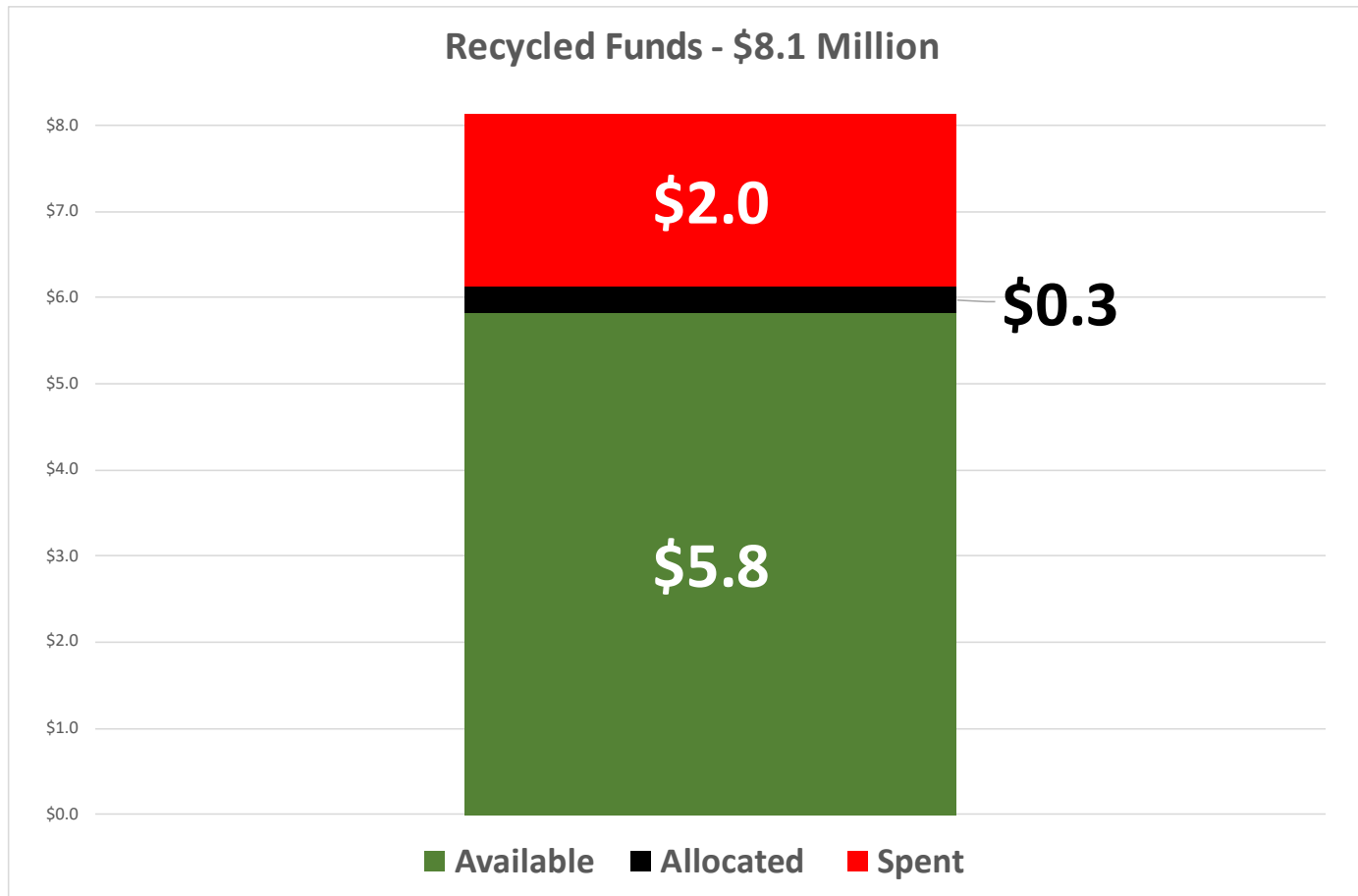


# SLFRF Financial Update



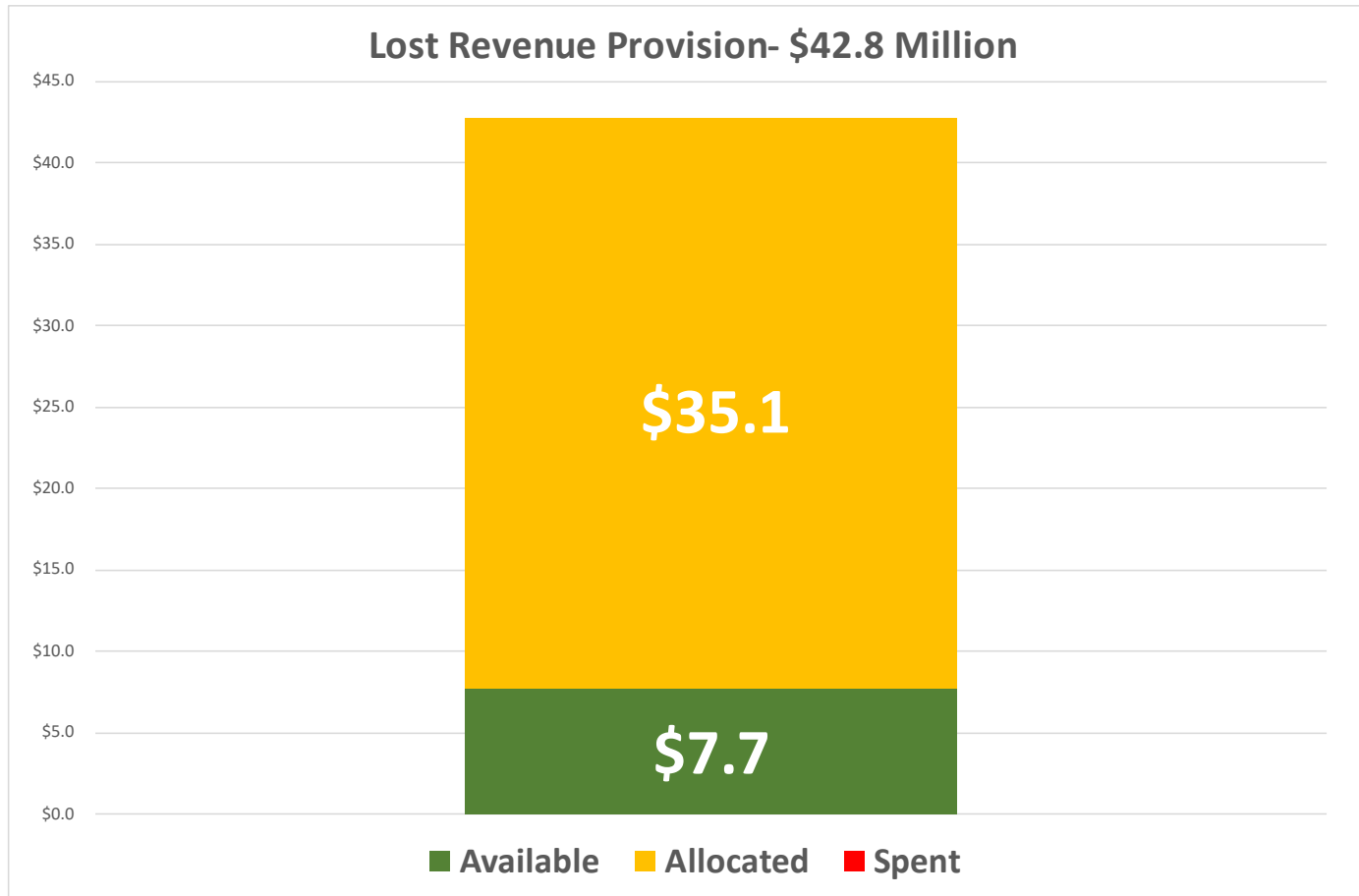
*As of September 7, 2022*

# SLFRF Financial Update



*As of September 7, 2022*

# SLFRF Financial Update



*As of September 7, 2022*

# SLFRF Financial Update



*As of September 7, 2022*

# Inflation Reduction Act Update

- National Association of Counties webinar on 9/1
  - \$27 billion greenhouse gas reduction fund grants
  - \$5 billion climate pollution reduction program grants
  - Counties eligible for clean energy tax credit programs
    - Clean energy production & CO2 capture
    - Clean fuels
    - Clean vehicles
  - USDOT programs for neighborhood access & equity, clean heavy-duty vehicles
  - \$1 billion for building energy code adoption grants
  - \$4.3 billion for high-efficiency home energy rebates

## Next Steps

- Next monthly work session October 12<sup>th</sup>
- NACo webinar on IRA on September 16<sup>th</sup>
- Childcare Update
  - Human Resources has identified preferred site
  - Options to lease, buy, or buy + renovate
  - Cost estimates up to \$5 million

# QUESTIONS AND DISCUSSION

- Thank you!