

Predicted High Park Fire Flood Response: Buckhorn Creek (Upstream)



USDA Natural Resources Conservation Service

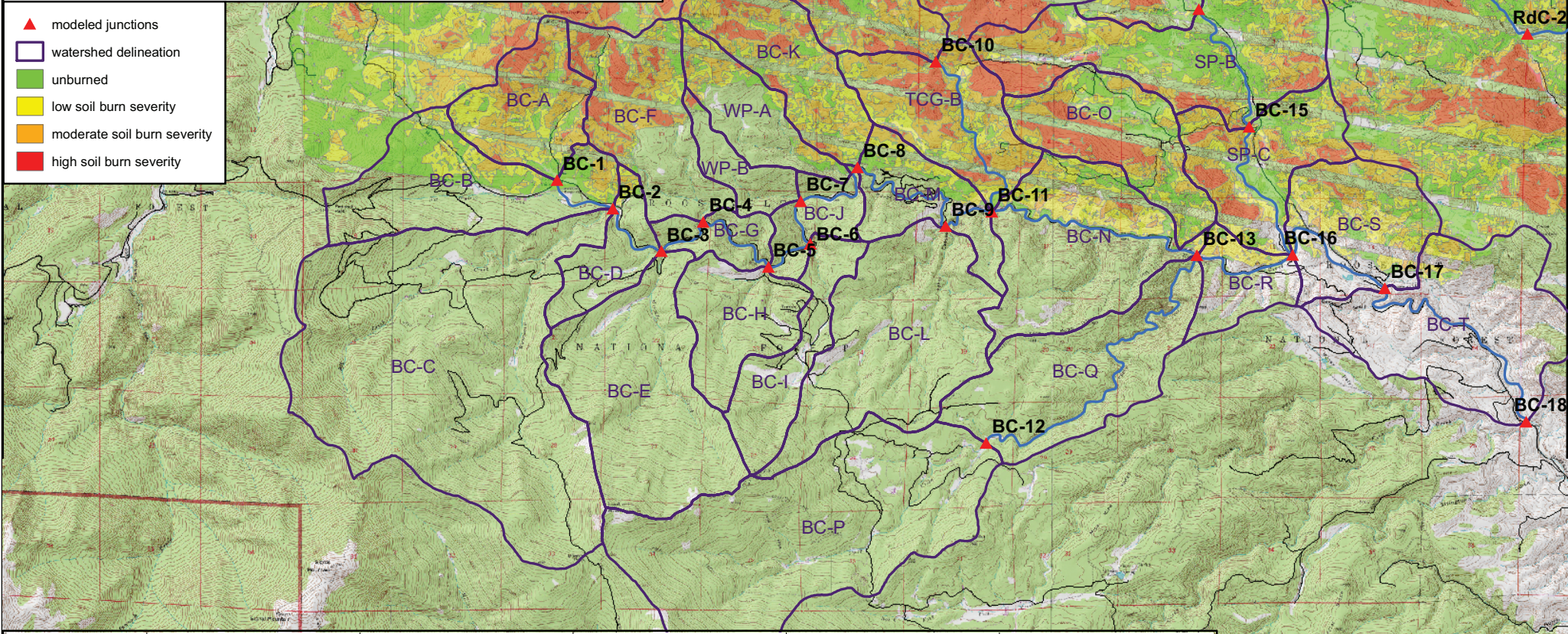
0 10,000 Feet

1:60,000

10/5/2012



- ▲ modeled junctions
- watershed delineation
- unburned
- low soil burn severity
- moderate soil burn severity
- high soil burn severity



Junction or Catchment	Drainage Area (mi ²)	2-Year Rain Event (0.6 inches)				10-Year Rain Event (1.5 inches)				25-Year Rain Event (1.8 inches)				50-Year Rain Event (2.2 inches)				100-Year Rain Event (2.4 inches)			
		Predicted Flow (cfs)	Post/Pre	Sed. Bulking	Flow (cfs)	Predicted Flow (cfs)	Post/Pre	Sed. Bulking	Flow (cfs)	Predicted Flow (cfs)	Post/Pre	Sed. Bulking	Flow (cfs)	Predicted Flow (cfs)	Post/Pre	Sed. Bulking	Flow (cfs)	Predicted Flow (cfs)	Post/Pre	Sed. Bulking	Flow (cfs)
BC-1	1.34	0	0	n/a	0	0	54	n/a	59	19	110	5.6	130	62	200	3.3	250	90	260	2.9	330
Buckhorn Creek B	2.22	0	0	n/a	0	0	n/a	0	0	0	0	n/a	0	4.7	10	2.1	10	15	24	1.6	24
BC-2	10.91	0	0	n/a	0	1.4	53	37.9	58	19	110	5.6	120	66	210	3.1	230	110	270	2.6	300
BC-3	14.74	0	0	n/a	0	6.6	51	7.7	56	23	100	4.5	110	65	210	3.3	230	100	290	2.8	320
Buckhorn Creek F	1.85	0	0.7	n/a	0.8	31	110	3.6	120	78	200	2.6	220	170	340	2.1	380	220	430	2.0	470
BC-4	16.59	0	0.7	n/a	0.8	31	110	3.6	120	95	210	2.2	230	180	380	2.2	420	290	490	1.7	530
BC-5	18.33	0	0.7	n/a	0.8	34	120	3.6	130	110	250	2.3	270	250	490	2.0	540	390	650	1.6	710
BC-6	19.44	0	0.7	n/a	0.8	34	120	3.6	130	110	250	2.3	280	260	500	1.9	550	420	670	1.6	730
BC-7	20.45	0	0.7	n/a	0.8	35	120	3.5	140	110	260	2.3	290	280	530	1.9	580	450	720	1.6	790
Whitepine A	1.02	0	0.1	n/a	0.1	22	31	1.4	34	42	56	1.3	62	78	97	1.2	110	98	120	1.2	130
Buckhorn Creek K	1.48	0	8.7	n/a	11	21	140	6.6	170	57	230	4.1	290	130	380	3.1	480	170	470	2.8	580
BC-8	23.19	0	8.9	n/a	10	44	170	3.8	180	120	310	2.6	340	360	670	1.9	730	560	960	1.7	1100