

LARIMER COUNTY ECONOMIC AND WORKFORCE DEVELOPMENT



LARIMER 101

MAY 3, 2018



“ No economy can succeed
without a high-quality workforce,
particularly in an age of globalization
and technical change. ”

BEN BERNANKE
FORMER CHAIRMAN OF THE FEDERAL RESERVE

Welcome

Ice Breakers

We're going to ask some questions.
You will use your phone to respond.



1. Please take out your phone

2. Start a text message to: 22333

3. Message: workforcedev746

4. You'll receive a confirmation text

In one word describe your day.

As a child, what did you want to be when you grew up?

**What would you like to know about economic development or
job search/hiring?**

- **What is Economic and Workforce Development?**
- **Why Economic and Workforce Development?**
- **Services We Provide**
- **Choose your Activity**
Explore one service we provide
- **Questions, Comments and Feedback**

Economic and Workforce Development Defined

Economic Development Defined

Successful Economic Development leads to **prosperity for residents** and injects new capital into a region to **invest in meaningful assets**.

Traditionally, Economic Development is a range of activities that helps create sustainable **employment opportunities** in a region.

Recently **the role of Economic Development has expanded** to encapsulate a range of activities, from workforce training to quality of life improvements.

Quality of life and economic development sustain one another. The things that make Larimer County a great place to live support its ability to have a healthy economy.

1. Regional convening and alignment
 - Regular Partners Meeting
 - Housing Affordability
 - Rural Broadband

2. Business Retention & Expansion
 - Business outreach
 - Relationship building

3. Data collection, analysis and distribution
 - Deep understanding of regional economic issues
 - Public facing data that's usable by diverse stakeholders

Workforce Development Defined

Workforce development serves a dual function, enabling individuals to acquire knowledge and skills for employment or improved employment, and providing employers with an effective means to meet their needs for a skilled workforce.

It prepares workers with needed skills, emphasizes the value of workplace learning and addresses the hiring demands of employers.

Workforce Development: Larimer County Areas of Focus for 2018



1. Work-based learning
 - Internships
 - Apprenticeship coordination

2. Career Pathways
 - Sector Partnerships
 - Entrepreneurial support

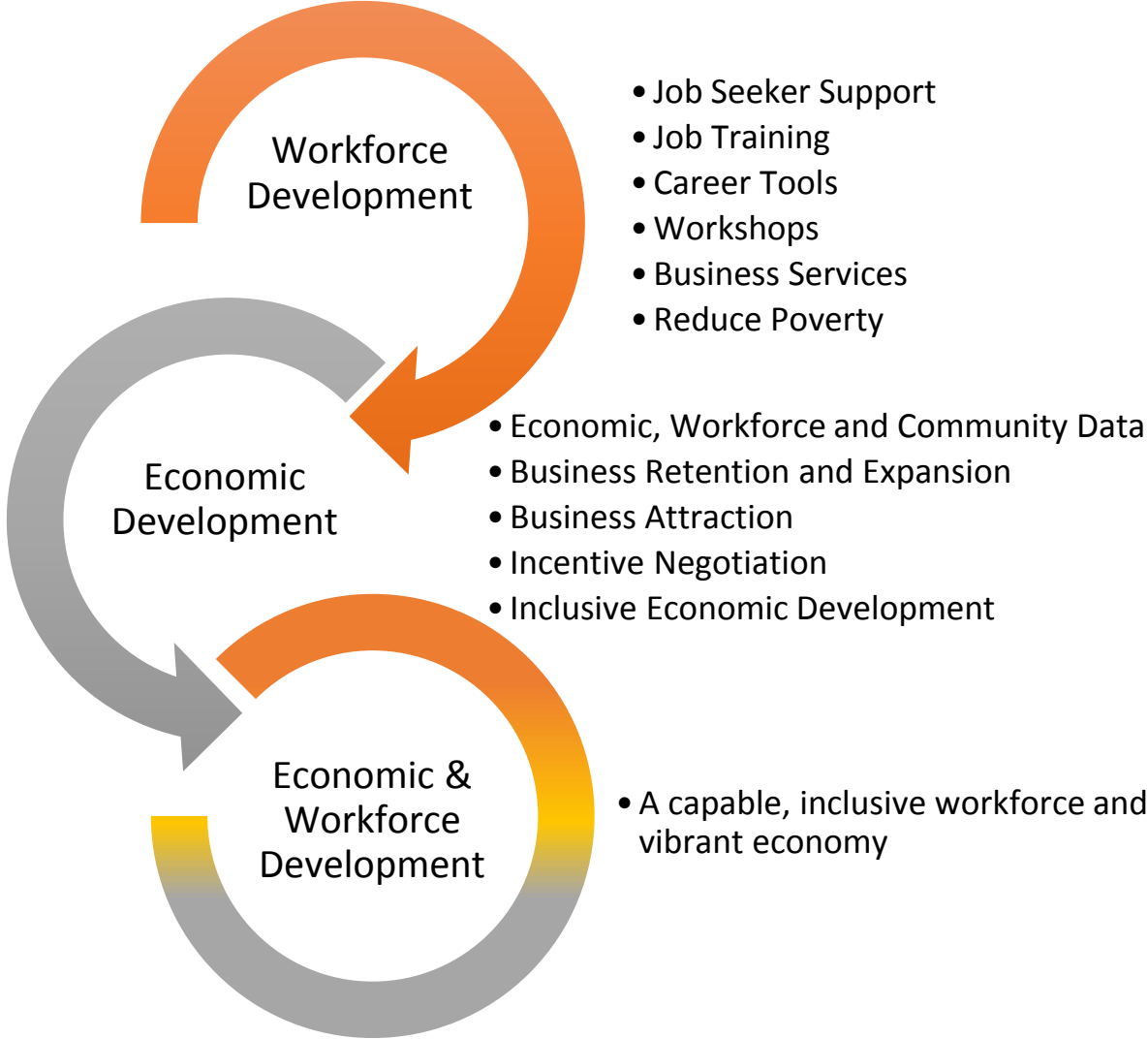
3. Research and Innovation
 - My Journey to Success
 - Goal Achievement

WE'VE MERGED

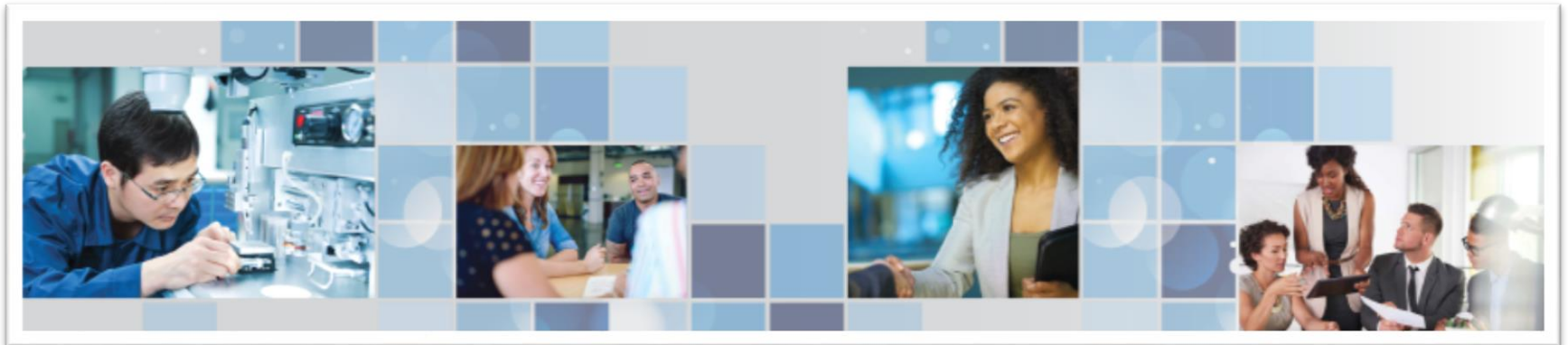
*Supporting our region's economic vitality by
aligning workforce and economic development.*



Larimer County Economic and Workforce Development

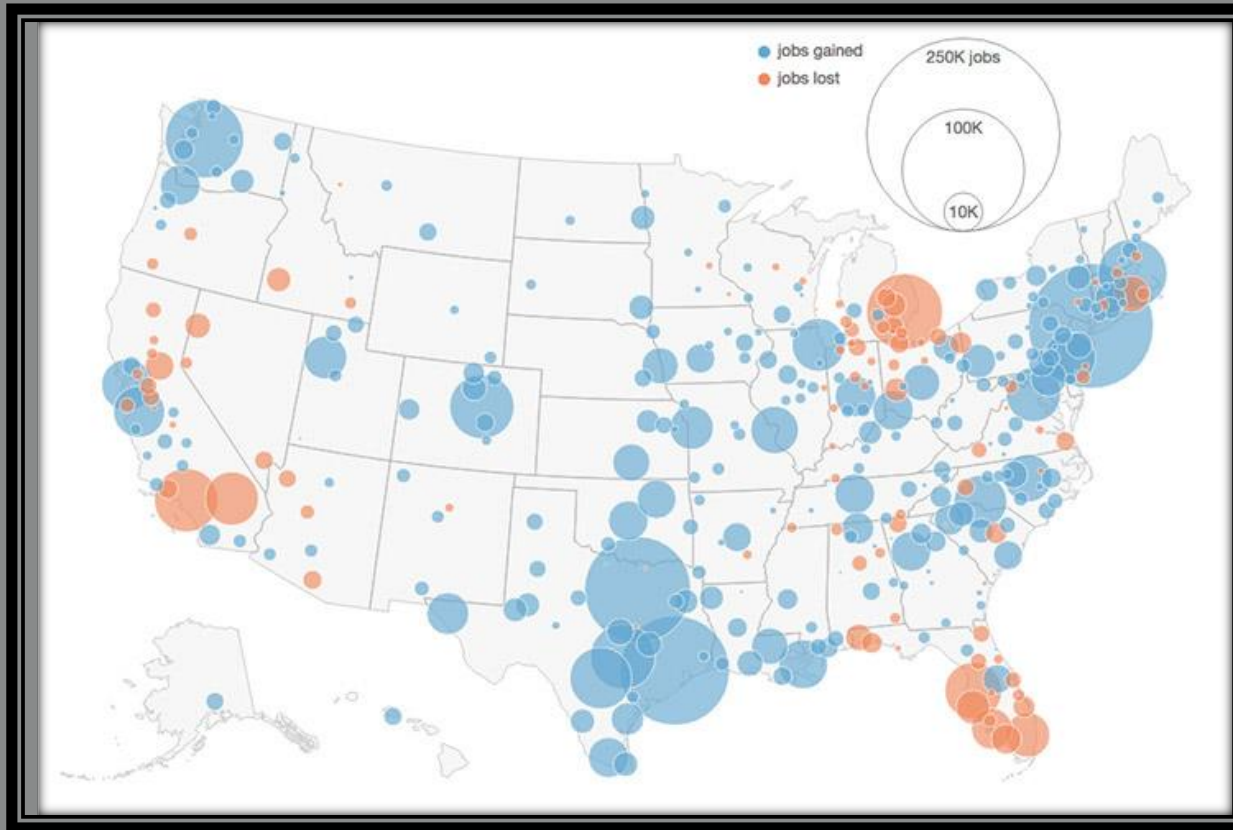


The purpose of Larimer County Economic and Workforce Development is to help create a capable, inclusive workforce and vibrant economy.



Why Economic and Workforce Development

Why Economic & Workforce Development: Geography of Jobs



Dynamic visualization of job gains and losses over the last 18 years.

<http://tipstrategies.com/geography-of-jobs/>

OVER THE LAST 18 YEARS WE HAVE EXPERIENCED:

- The Great Recession
Officially lasted from December 2007 to June 2009 but the job losses spanned a longer timeframe.
- The Dot-Com Bubble
- The Housing Bubble
- Significant Change in Manufacturing
- Automotive Industry Changes
- Natural Disasters including Hurricane Katrina and Local Flooding and Fires

In one word, what is your perception of the northern Colorado economy today?

In one word what do you think the economy will be like in 5 years?

 When poll is active, respond at **PollEv.com/workforcedev746**
 Text **WORKFORCEDEV746** to **22333** once to join

IT'S EVITABLE.

THERE WILL BE ANOTHER RECESSION AND OTHER EVENTS THAT IMPACT
OUR JOBS AND ECONOMY.

Job seekers, workers & students:
Access to meaningful employment



Business / Industry:
Access to strong talent pipeline

A STRONG COMMUNITY BEST WITHSTANDS CHALLENGES WHEN IT
CONNECTS EMPLOYMENT, SKILLED TALENT AND COMMUNITY
PRIORITIES.

Economic and Workforce Development Department Impact to the Community

One of the main functions of the Economic and Workforce Development Department is to connect.

In 2017 we served over 1,700 employers and 12,000 job seekers.



Services We Provide

Businesses

- Training & Education
- Hiring events
- Internships
- Workshops
- Elevate
- Skillful
- Skill verification assessments
- Employee Recruitment
- Sector partnerships
- Business retention and expansion
- Business attraction
- Data
- Incentive negotiation
- Resources for employee transitions
- Workforce Development Board
- and much more!

Job Seekers and Young Adults

- Job posting
- Workshops
- Training & education
- Sector partnerships
- Hiring events
- Internships
- Skill verification assessments
- Career Road Trips
- Larimer County Conservation Corps
- Veteran Services
- Data
- Career exploration
- Employment support
- Young Entrepreneur Tournament
- Larimer County Works Program
- and much more!

Education and Training

In Program Year 2016

- 210 customers received training support toward a credential in 100+ unique occupations that address Northern Colorado's current employer needs. The most common occupations are listed below.
- 73 young adults earned a High School Equivalency improving career lifetime earnings.
- Staff assisted in 705 resume consultations.



In program year 2016

- 315 customers participate in work-based learning opportunities designed to help them earn income while they gain and demonstrate their professional skills.
- 597 students visited 56 businesses to learn about career pathways and training options across a broad range of industries and jobs.
- The Larimer County Conservation Corps maintained or constructed 117 miles of trail.

Y **178** youths have participated over **9 years** of the Young Entrepreneur Tournament, with increasing participation in recent years. 2017's YET saw **36** entrepreneurs compete for **T** **\$1750** in prizes.

Talent 2.0 Implementation



OPPORTUNITY 1. INCREASE ACCESS

Actively support employers in finding, attracting, and retaining the talent that they need



OPPORTUNITY 2. IMPROVE ALIGNMENT

Align education and workforce resources more closely with the business community and the local talent pool



OPPORTUNITY 3. REMOVE BARRIERS

Collectively address structural issues that serve as barriers to a secure talent pipeline

Data Dashboard – Two Versions Released

Summer 2016: poverty/unemployment, educational attainment, labor force participation, home prices, commute distance, employment per sector, current labor market.



Larimer County Workforce Development Board
2016 Economic & Workforce Health Report



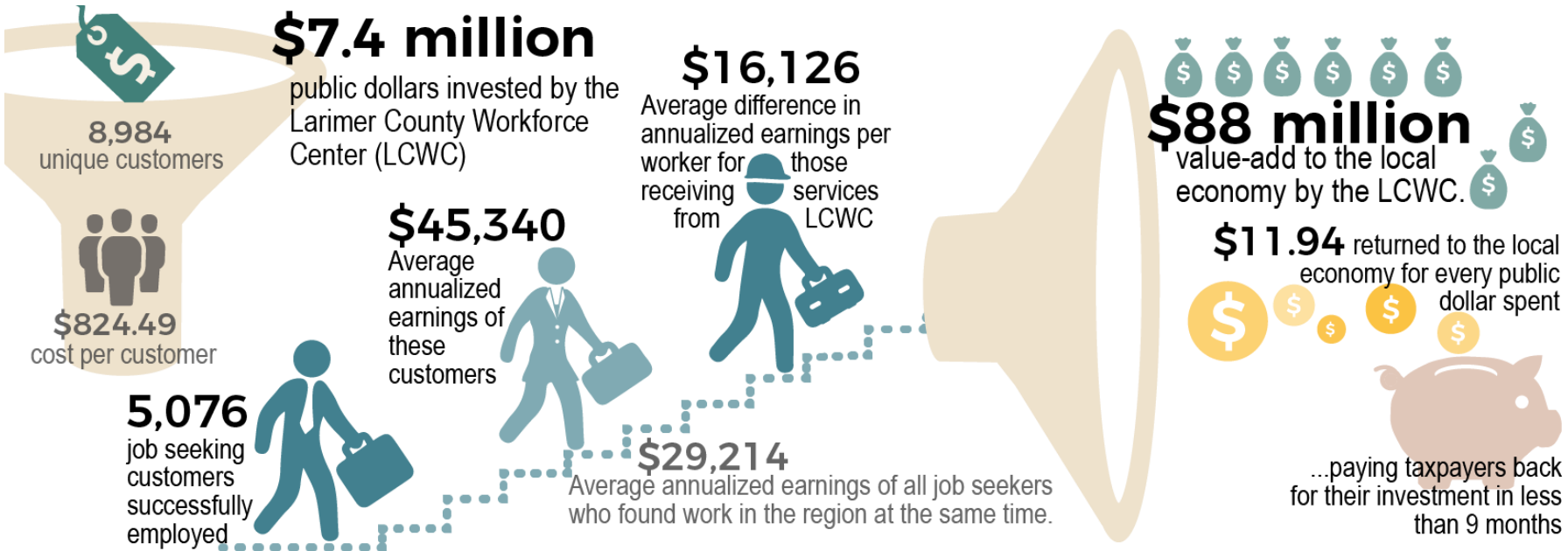
Winter Update: Update provides additional detail on education component of our talent pipeline, the cross commute and transportation choices of our current workforce, and housing affordability in Larimer.

Data Dashboard will move online in 2018!

Economic Impact of Workforce Center Operations



- Currently finalizing Larimer County’s report
- Our report applies the formula developed for Colorado Workforce Centers
- Highlights the range of activities that are not included and may be highly valuable to our community, but for which it is difficult to calculate an ROI.
 - Youth Team, Workforce Symposium, Elevate Workshops, etc....





People, Businesses, Education Institutions, Community Organizations...

The Community

Interactive Session

You have 25 minutes to explore one service

Description:

Good Data is helpful, but interpreting the data is key to drive economic and workforce initiatives. We'll share with you some recent data projects and discuss how they impact programs and services

Facilitator:

Joni Friedman



Description:

Whether you are looking for a new job by choice or because of a job loss, we can help show you what employers are looking for and how you can capture their attention with the right tools. Visit Marcy's table to learn about resume review and other tools.

Facilitator

Marcy Kasner



Description:

Through access to internships, educational workshops and community based projects we help prepare youth to work and thrive in our community. Join Andrew to learn about youth programs.

Facilitator:

Andrew Minor



What surprised you about economic and workforce development?

Top

Questions

Comments

Feedback



Thank you!

