

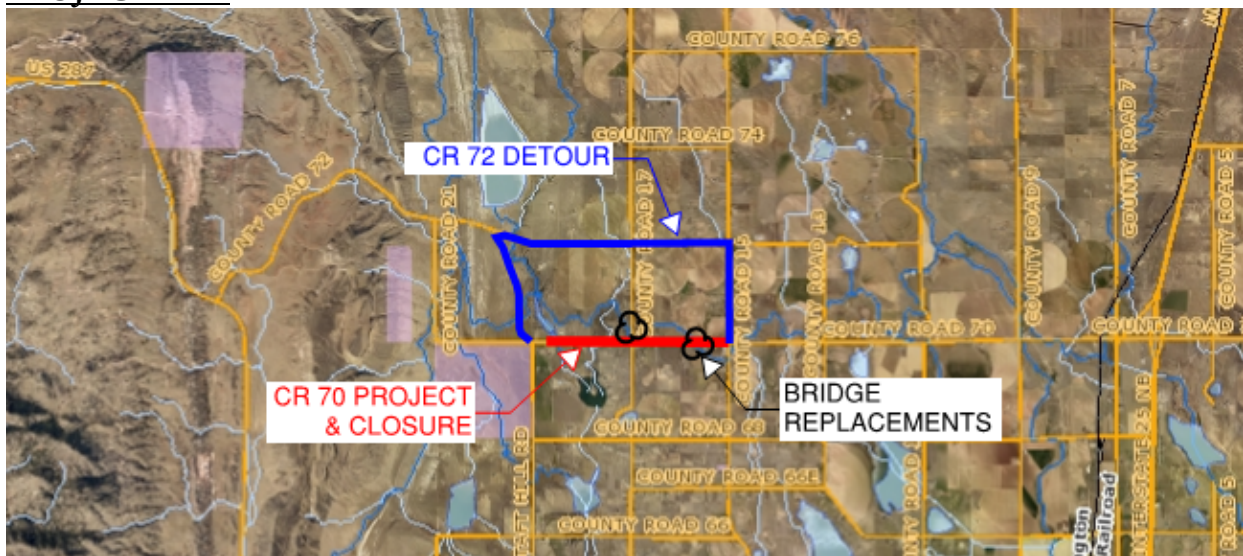
Open House

County Road 70 (Owl Canyon)

Construction Detour & Closure for Roadway Improvements Between County Roads 19 and 15

Wednesday, August 29th, 2018, 5:30 to 7:30 p.m.
Leeper Center, Wellington

PROJECT MAP



PROJECT SCOPE

- Improve and widen 2 miles of CR 70 between CR 19 and CR 15.
- Maintain one travel lane in each direction and reconstruct the pavement.
- Add 6 to 8 foot wide paved shoulders and improve sight distance at vertical curve crests.
- Replace two bridges over the North Poudre Irrigation Canal (one on CR 17 just north of CR 70 and another 0.6 miles east of CR 17). Replacement of several other drainage culverts are also included in the two mile improvement.
- Intersection improvements at CR 15 are not proposed with this phase.

CONSTRUCTION CLOSURE

- The planned roadway closure extends from the east side of the CR 19 roundabout to the west side of the CR 70 and CR 15 intersection.

- Access will remain open for local traffic only during construction while thru traffic will be detoured one mile north to CR 72 between CR 19 and CR 15.

CONSTRUCTION DETOUR

- Improvements such as placing additional road base and dust suppressant as well as increasing maintenance frequency to the detour portion of CR 72 between CR 19 and CR 15 are planned to facilitate the increase in daily traffic during the project.
- Other accommodations are also planned for the detour route such as:
 - Signing CR 72 and CR 15 as a 4-way stop controlled intersection and widening intersection corners for turning movements.
 - Utilize the digital message boards on I-25.
 - Place additional signage on US Highway 287.
 - Notify emergency services, post office, and school transportation services.

ANTICIPATED CONSTRUCTION

- Construction is anticipated to occur from December 2018 through Summer 2019.

INFORMATIONAL WEB LINKS

Information presented at tonight's meeting will be available in the coming days on the Virtual Courthouse at www.larimer.org/engineering, then scroll down to the 'Spotlights' section for CR 70 related links.

There is also a CR 70 from CR 19 to CR 15 monthly updated project status report available online at <https://www.larimer.org/engineering/projects/transportation-projects/project-status-reports>.

The Owl Canyon Corridor Planning Project from 2008 is available on the Larimer County Virtual Courthouse at <https://www.larimer.org/engineering/transportation/planning/owl-canyon-corridor-project>. Below are the Phasing Options presented in the 2008 Planning Project:

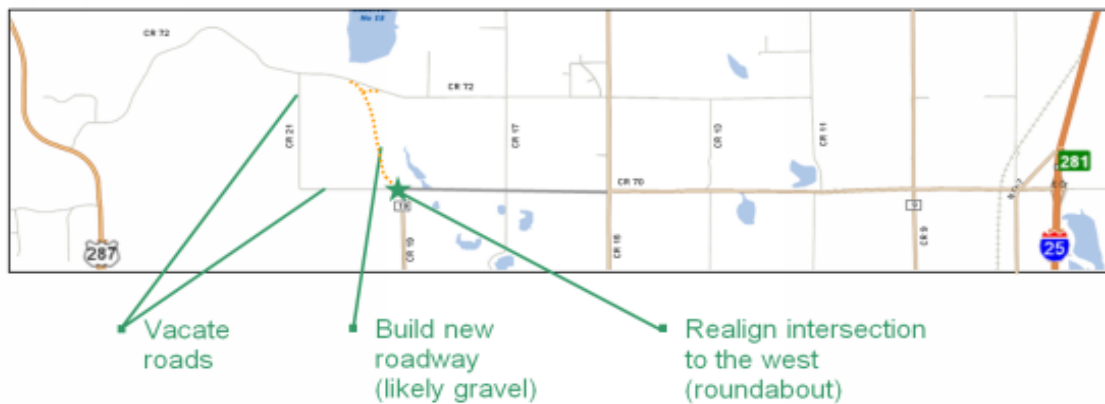
1 – Spot Safety Improvements - Corridor Wide

COMPLETED

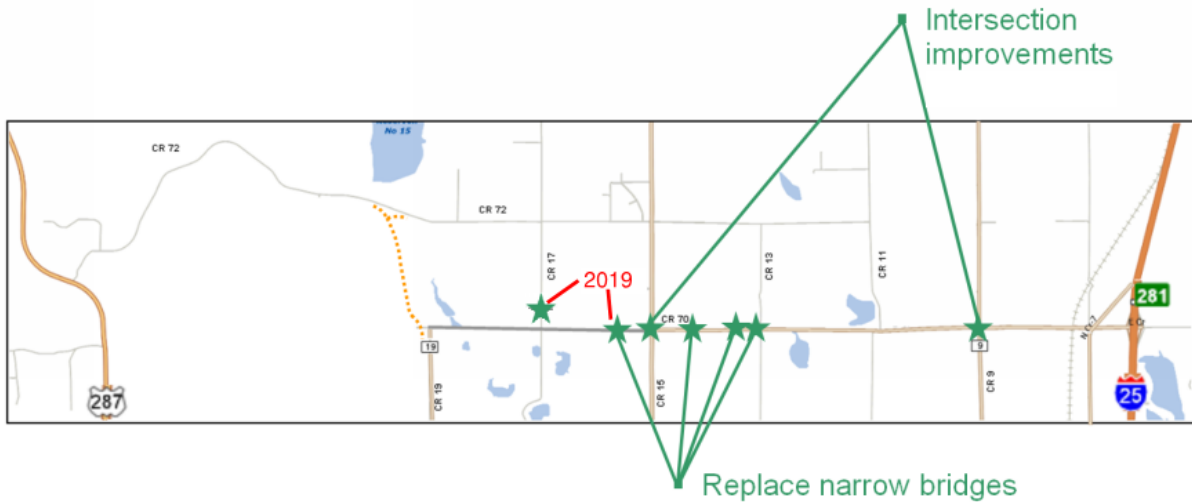


2 – Construct New Alignment and Intersection at CR 19

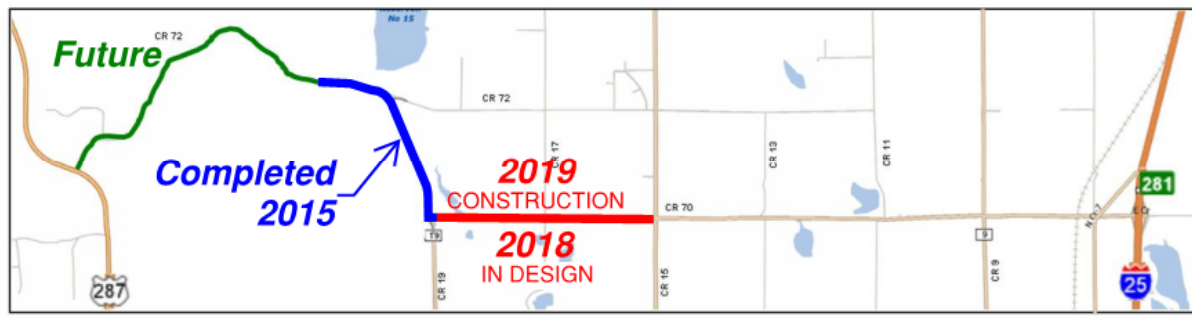
COMPLETED 2015



3 - Miscellaneous Geometric Improvements



4 – Paving (2-lane road)



5 - Ultimate Improvements As Needed In Future Years



- MAY INCLUDE:
- Shoulder Widening
 - Intersection Re-alignment (CR 7, 11, and 13)
 - Replace Bridges

CONTACT US

For more information, please feel free to contact the project manager, Matt Johnson at (970) 498-5724 or by email at mjohnson@larimer.org.