

# LARIMER COUNTY NATURAL RESOURCES DEPARTMENT



## Applicability and Goal

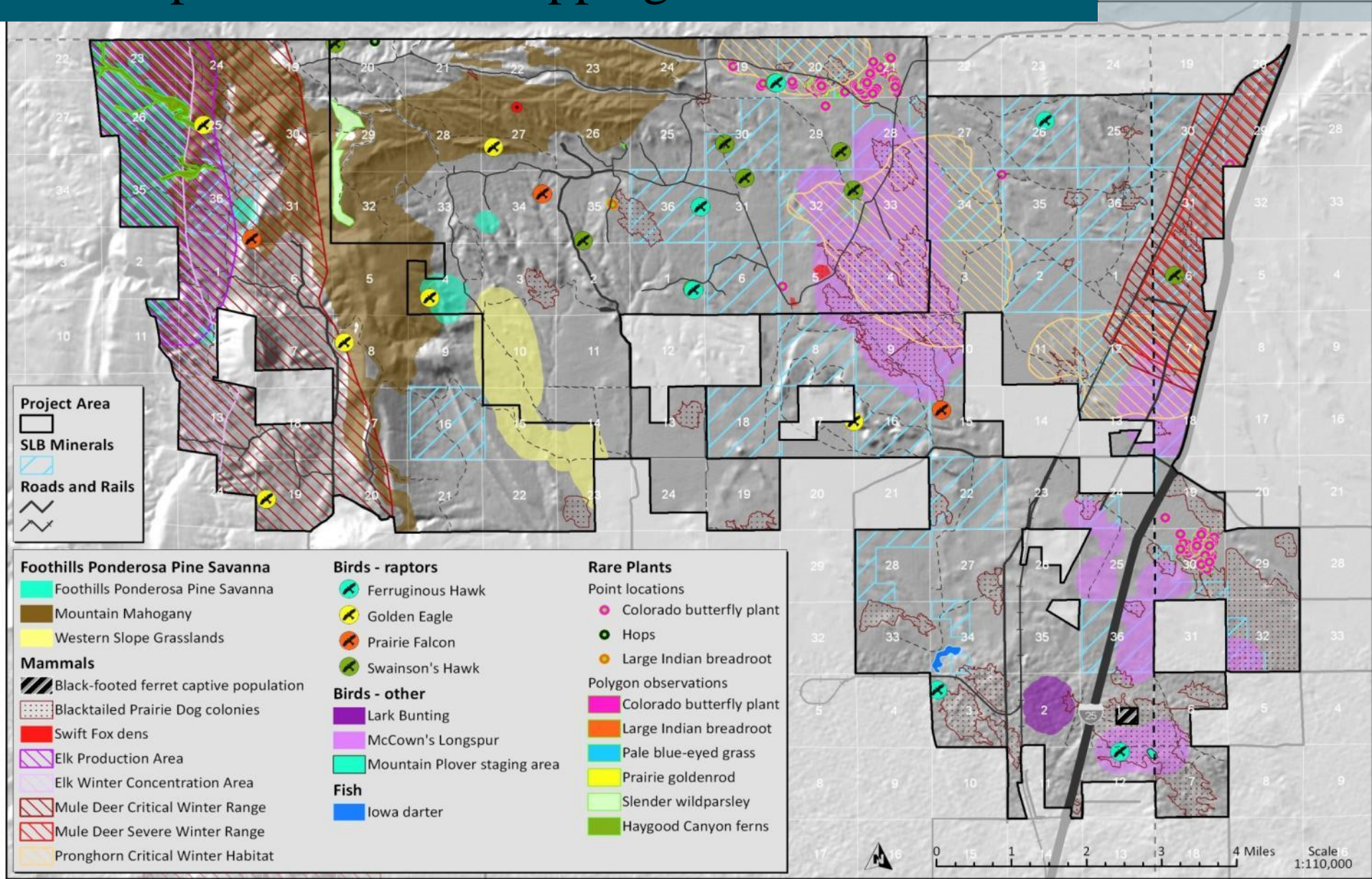
- Goal: To develop a plan for oil and gas development that **provides access** to the mineral estate, with specific strategies to **avoid, minimize and mitigate** surface impacts to key resource values.
- Base premise: lands conserved in fee be granted a no surface occupancy status unless no other viable alternative exists.
- Energy By Design: If surface use is the only viable alternative, the applicant will work with the owner (county or city) to perform a resource assessment planning process.

# Process

1. Identify & Map Priority Resource Values
  - Biological
  - Cultural
  - Recreational (viewsheds & facilities)
2. Add Buffers & Timing Limitations
3. Overlay Maps
4. Define Surface Occupancy

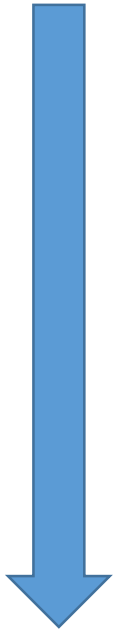


# Example: Resource Mapping



# Surface Occupancy Definitions

Highest Values/  
Most Restrictive



## 1. No surface occupancy (NSO)

Highest resource value areas. Complete avoidance.

## 2. Restricted surface occupancy (RSO)

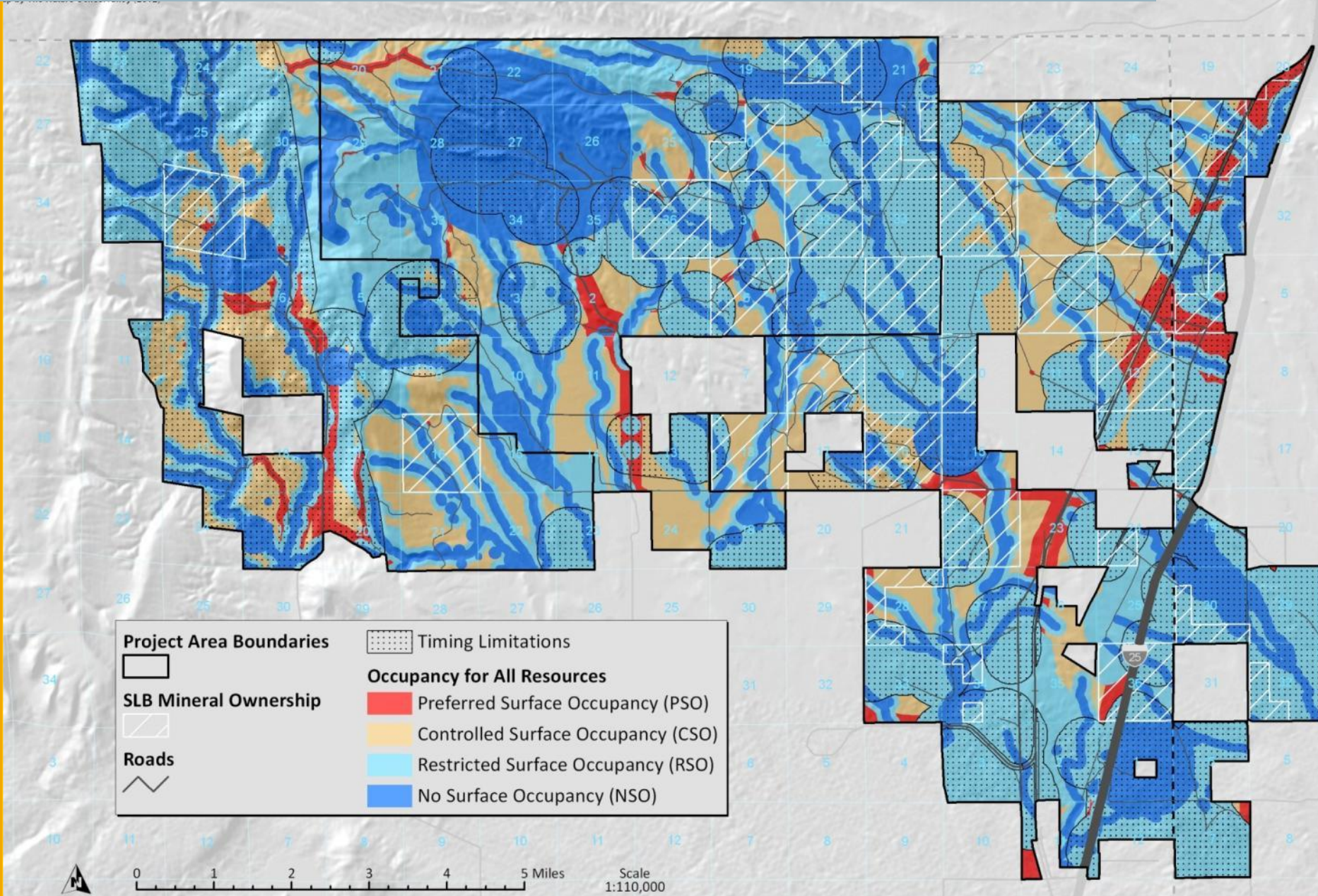
Limited oil and gas development permitted with strategies to minimize/eliminate any permanent impact. BMP's apply.

## 3. Preferred surface occupancy (PSO)

Areas of previous/existing disturbance

Lowest Values/  
Least Restrictive

# Surface Occupancy Map



# Best Management Practices

## General

- Spacing
- Weed control
- Dust control
- Disturbance Caps
- Reclamation
- Compensatory mitigation
- Others

## Conservation Target-specific

- Seasonal Timing Limitations
- Daily Timing Limitations
- Survey requirements