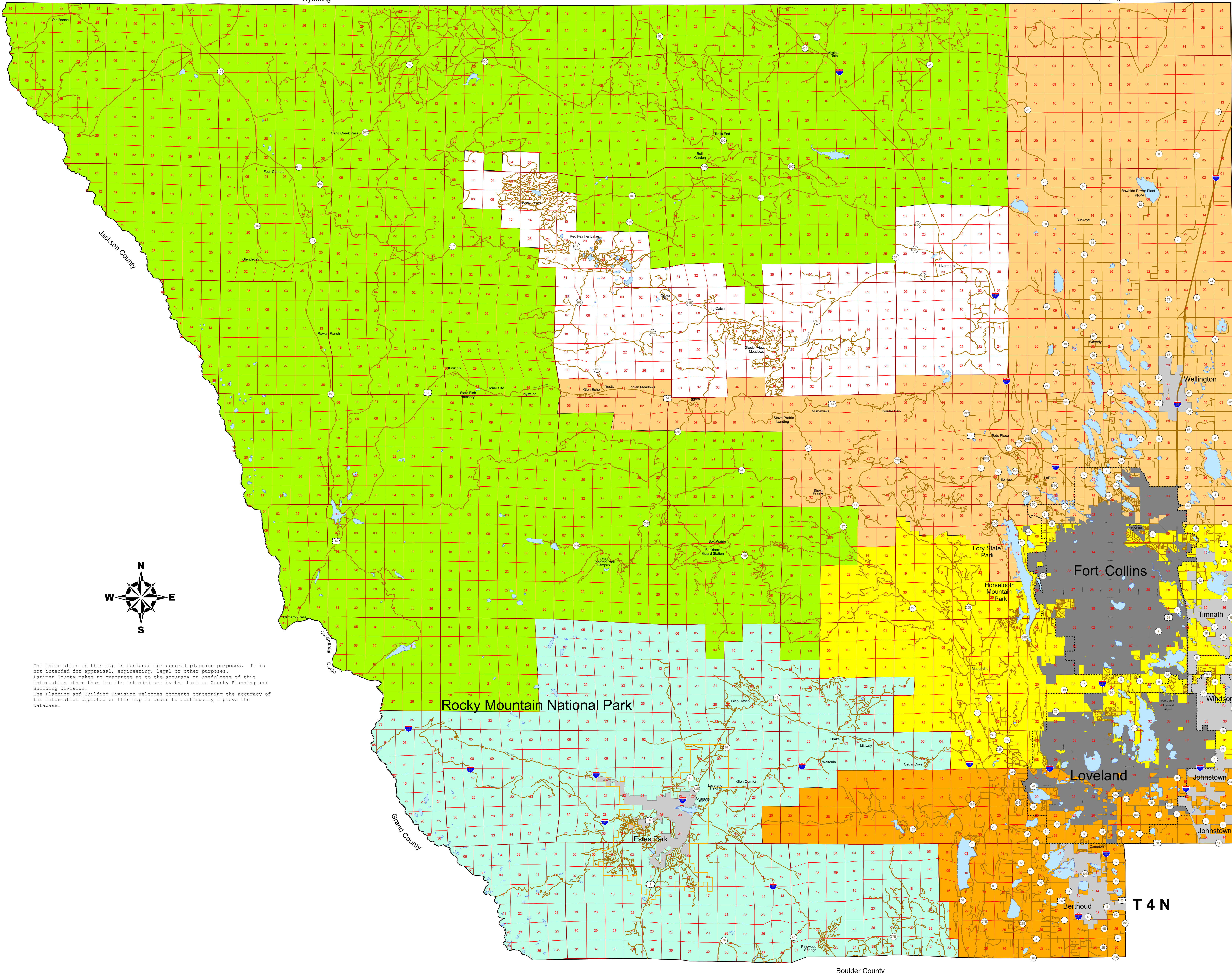


# Larimer County Building Inspection Territories Map

R 78 W R 77 W R 76 W Wyoming R 75 W R 74 W R 73 W R 72 W R 71 W R 70 W Wyoming R 69 W R 68 W



T 12 N  
T 11 N  
T 10 N  
T 9 N  
T 8 N  
T 7 N  
T 6 N  
T 5 N  
T 4 N

**Legend**

**Inspection Territories Names**

- 1 Fort Collins North/Wellington
- 2 Fort Collins South/Loveland/Masonville
- 3 Berthoud
- 4 Estes Park/Drake
- 5 Red Feather Lakes/Livermore
- 6 Northern Mountains

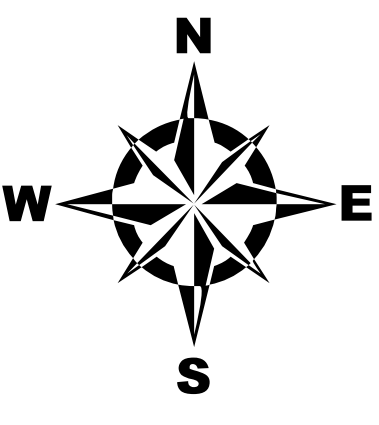
**Roads**

- Roads
- Estes Valley Planning Area
- Rocky Mountain National Park
- Growth Management Areas

**Incorporated Areas**

**Cities and Towns**

- Berthoud
- Estes Park
- Fort Collins
- Johnstown
- Loveland
- Timnath
- Wellington
- Windsor



The information on this map is designed for general planning purposes. It is not intended for appraisal, engineering, legal, or other purposes. Larimer County makes no guarantee as to the accuracy or usefulness of this information other than for its intended use by the Larimer County Planning and Building Division. The Planning and Building Division welcomes comments concerning the accuracy of the information depicted on this map in order to continually improve its database.

