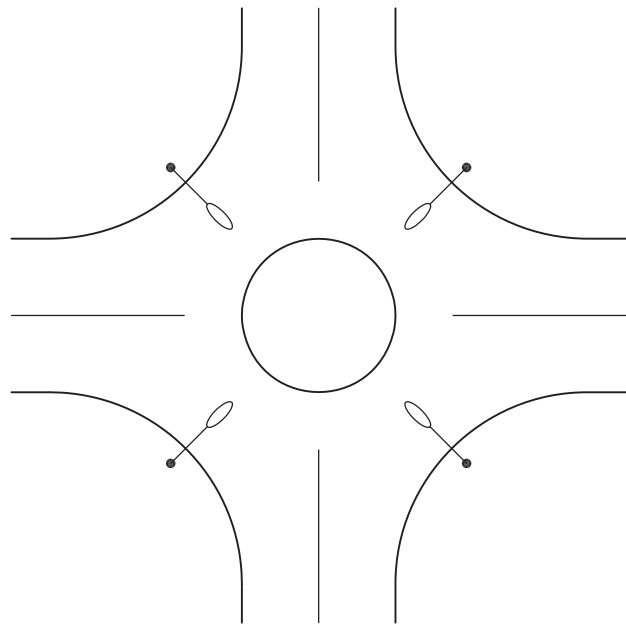
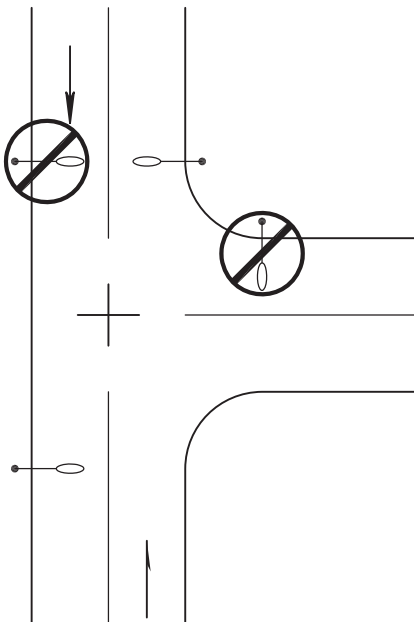


Incorrect Street Light Placement



Street Lights Shall Be Placed On The Downstream Side Of Intersection, As Viewed By A Motorist In The Lane Beneath The Luminaire.

STREET LIGHT PLACEMENT AT INTERSECTIONS

LARIMER COUNTY
URBAN AREA
STREET STANDARDS

DESIGN
FIGURE

REVISION NO:

DATE: 10/25/00

FIGURE

15-1