

LARIMER COUNTY: HEALTH & ENVIRONMENT



# COVID-19 Update

February 22, 2021

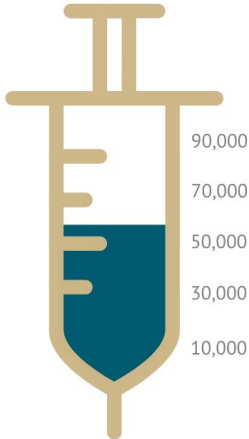


# COVID-19 Vaccine Progress

LARIMER COUNTY  
COVID-19 VACCINE SUPPLY UPDATE  
2/22/21

## Phase 1A, 1B.1, and 1B.2

ELIGIBLE PEOPLE IN PHASES  
98,000



~10,000  
doses allocated weekly



54,323  
have had at least one dose



24,816 Larimer County residents have had both doses  
79,139 total doses received

# COVID-19 Vaccine Progress

Category	Total	% of group
Doses received by residents	<b>79,139</b>	--
Residents receiving first dose	<b>54,323</b>	<b>15.2%</b>
Residents vaccinated	<b>24,816</b>	<b>7.0%</b>
Age 70+ residents at least one dose	<b>26,676</b>	<b>66.9%</b>
Age 70+ residents vaccinated	<b>12,899</b>	<b>32.3%</b>
White non-Latinx residents vaccinated	<b>22,284</b>	<b>7.4%</b>
Non-White non-Latinx residents vaccinated	<b>722</b>	<b>4.4%</b>
Latinx residents vaccinated	<b>668</b>	<b>1.6%</b>
Unknown race residents vaccinated	<b>1,142</b>	--

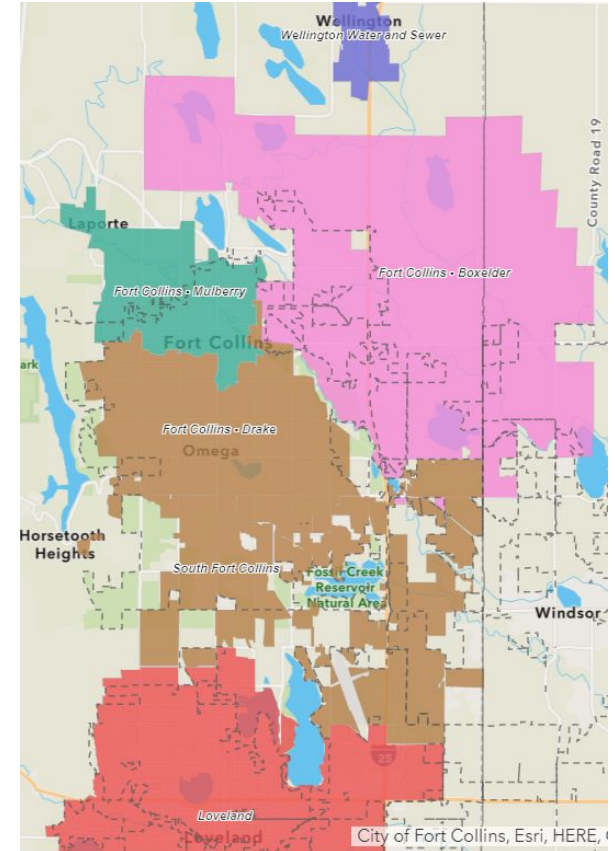
# POP UP EVENT

- Focus efforts on targeted approaches to advance vaccine equity. Submitted to host an Equity Point of Distribution (POD) pop up event, targeting Essential Workers who may be facing access or hesitancy issues among Latinx communities.
- Working with our outreach staff to ensure trust and utilize appropriate strategies to ensure persons are comfortable in receiving the vaccine and to prioritize ease of access to the vaccine for essential workers.

# Wastewater Surveillance

## Wastewater Surveillance (An Early Warning Indicator)

- Wastewater data from February 18 are suggesting upward trends in viral loads across 6 of the 8 monitored sewersheds.
- Multiple sewersheds have seen a substantial increase in viral loads, matching levels last seen in January. Wastewater changes precede PCR testing and case identification by 5 to 10 days.
- Increases suggests we could be a week or so away from an increase in our number of identified cases if these readings indicate a greater transmission.



# Case Rate

## Cases/100k: 7-Day Rate



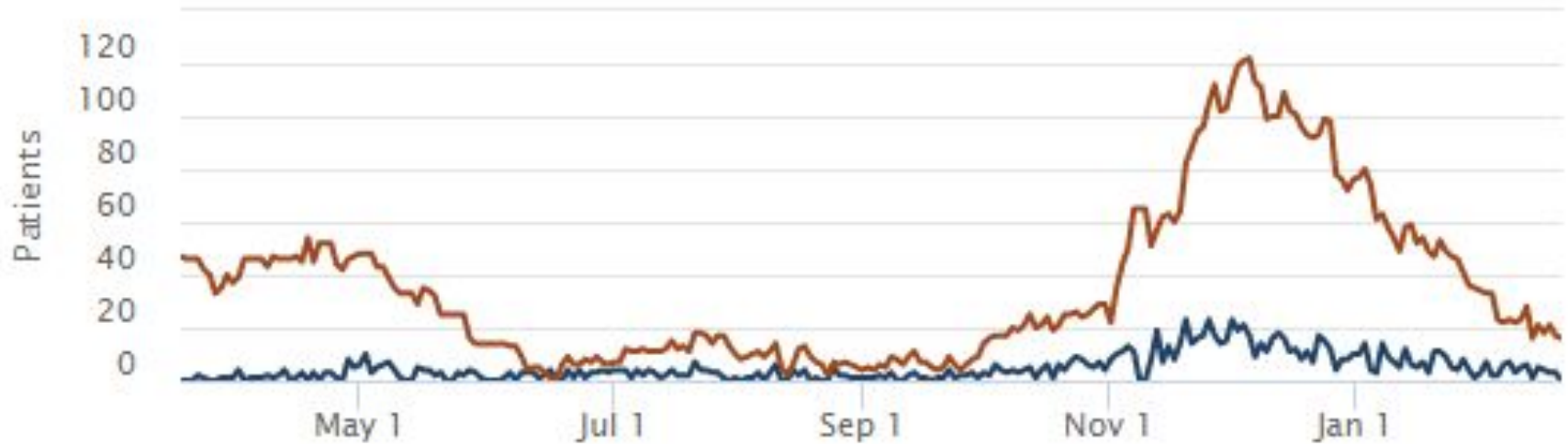
Zoom 1wk 1mo **3mo** All 7d 14d Mo



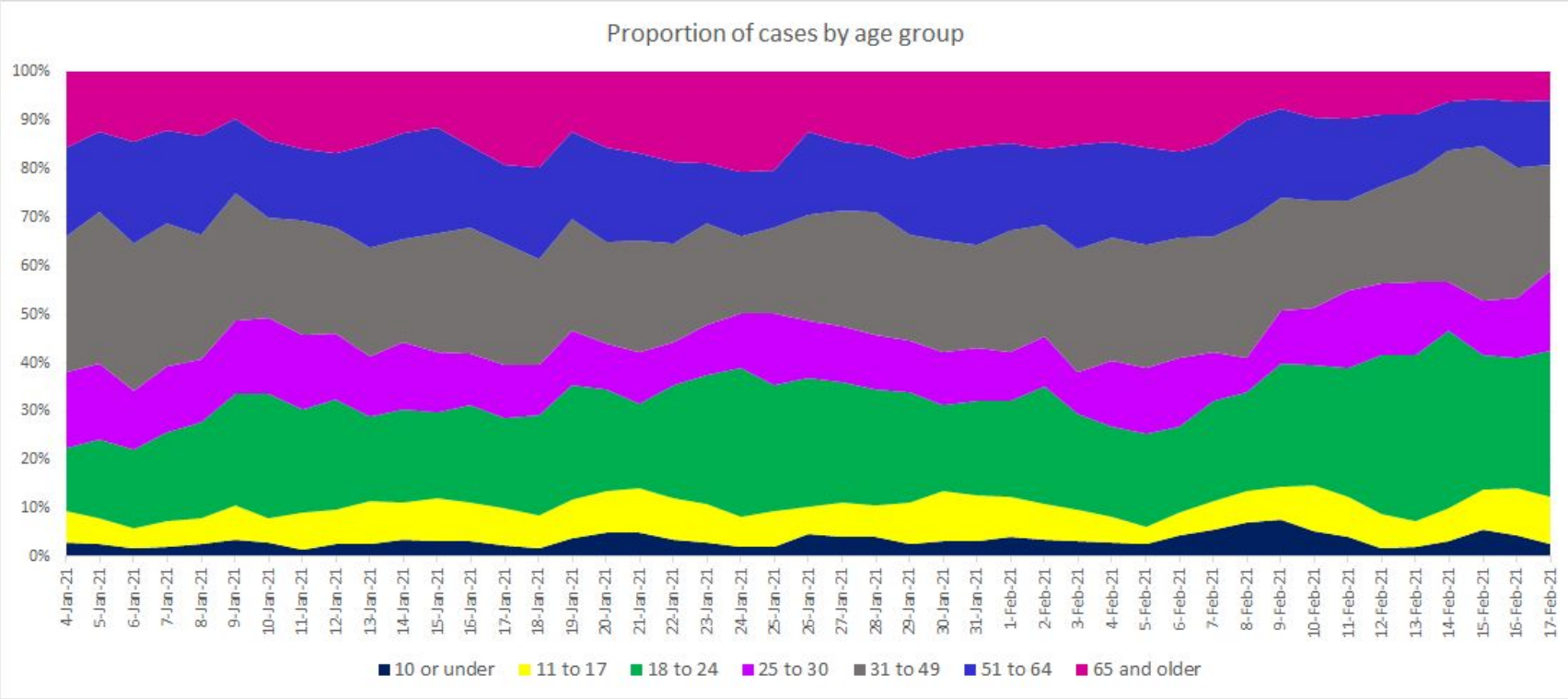
The state moved from 14- to 7-day as a dial determinate on Feb. 5, 2021.

# COVID-19 Hospitalizations

**Total Hospitalized COVID-19 Positive Patients and Patients Admitted by day**



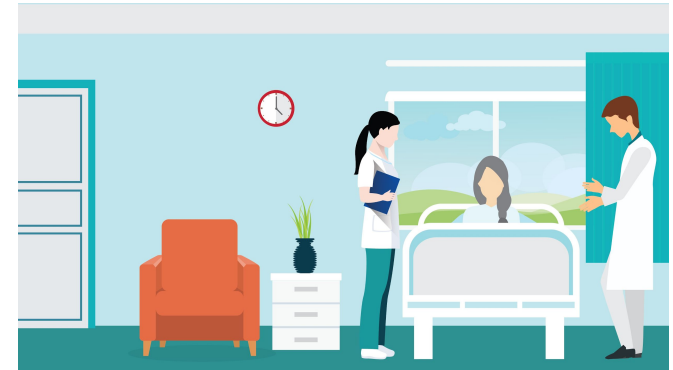
# Cases Among 65 years and older





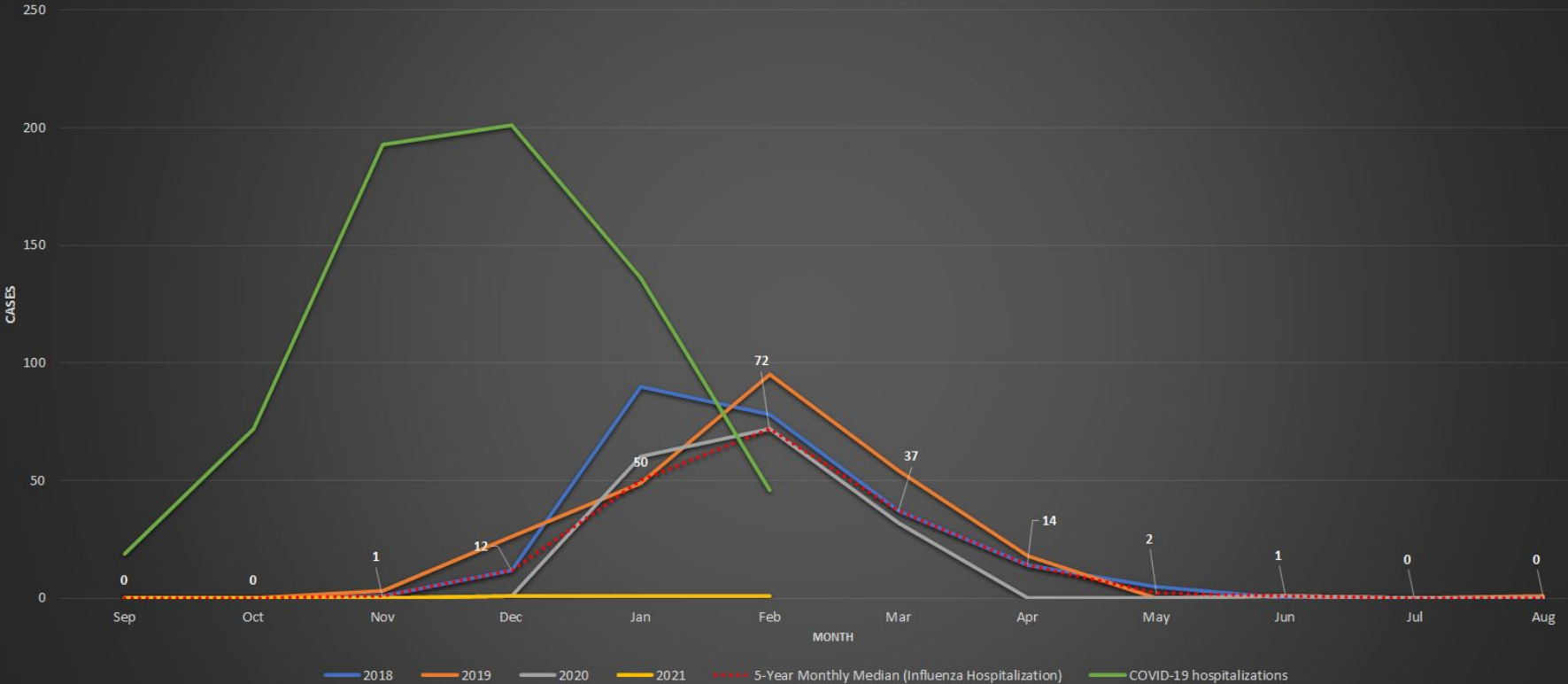
# Long Term Care Facilities (LTCFs)

- Cases in Long Term Care Facilities are down over 90% from the December peak.
- The post 2-dose vaccinated individuals who are then diagnosed with COVID are either asymptomatic or not reporting symptoms.
- Among fully vaccinated individuals in LTCFs, we have not seen any hospitalizations or deaths.



# Influenza

Influenza Hospitalizations, 2018 - 2021 YTD with 5-Year Monthly Median, Larimer County



# Contact Us

## Larimer County COVID-19 Vaccine Questions



Call: (970) 498-5500 (M-F, 9:00-4:30)



Text: (970) 999-1770



Email: [publichealth@larimer.org](mailto:publichealth@larimer.org)