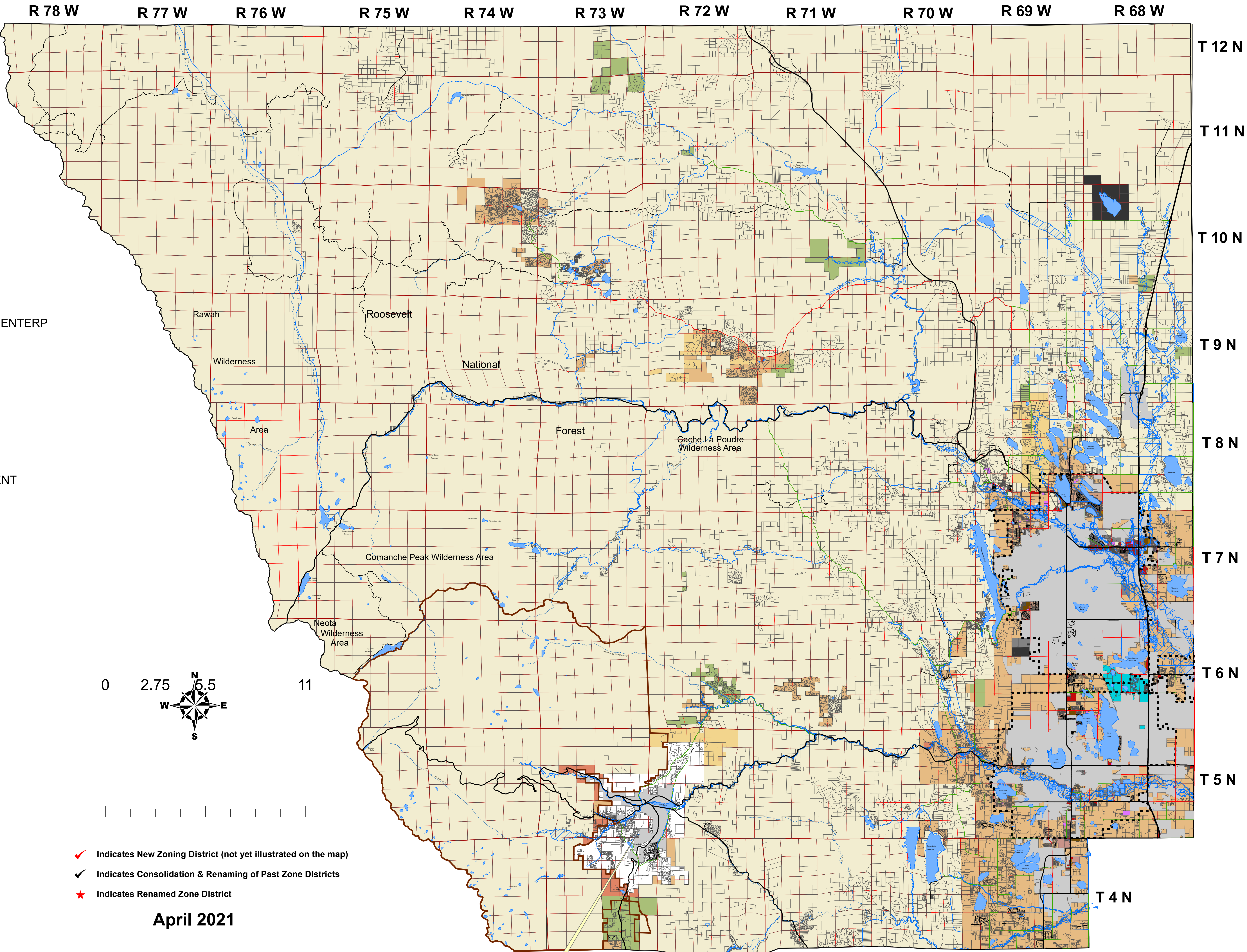


# Larimer County Zoning Districts Map



- ZONING DISTRICTS "LUC2020"**
- ✓ NR, NATURAL RESOURCES
  - ✓ FO, FORESTRY
  - ✓ A, AGRICULTURE
  - ✓ O, OPEN
  - ✓ RR1, RURAL RESIDENTIAL
  - ✓ RR2, RURAL RESIDENTIAL
  - ★ UR1, URBAN RESIDENTIAL
  - ★ UR2, URBAN RESIDENTIAL
  - ★ UR3, URBAN RESIDENTIAL
  - ✓ IR, INTERFACE RESIDENTIAL
  - ★ MR, MULTIFAMILY RESIDENTIAL
  - ★ MHP, MANUFACTURED HOME PARK
  - ✓ ACE, AGRICULTURAL COMMERCIAL ENTERP
  - ✓ RC, RURAL COMMERCIAL
  - ✓ CD, COMMERCIAL DESTINATION
  - ✓ CN, COMMERCIAL NEIGHBORHOOD
  - ★ CC, COMMERCIAL CORRIDOR
  - IL, INDUSTRIAL LIGHT
  - IH, INDUSTRIAL HEAVY
  - AP, AIRPORT
  - PD, PLANNED DEVELOPMENT
  - ✓ RPD, RURAL PLANNED DEVELOPMENT
  - ✓ CF, COMMUNITY FACILITIES
  - ✓ MU N, MIXED USE NEIGHBORHOOD
  - ✓ MU C, MIXED USE COMMERCIAL
  - CONDITIONAL ZONING

- 100 YEAR FLOOD ZONES**
- A
  - AE
  - AH
  - AO

- ROAD FUNCTION CLASS**
- State Hwys/Interstate
  - Arterial Road
  - Major Collector
  - Minor Collector
  - Rocky Mountain National Park

- Incorporated Areas**
- Berthoud
  - Estes Park
  - Fort Collins
  - Johnstown
  - Loveland
  - Timnath
  - Wellington
  - Windsor
  - Growth Management Areas

- ✓ Indicates New Zoning District (not yet illustrated on the map)
- ✓ Indicates Consolidation & Renaming of Past Zone Districts
- ★ Indicates Renamed Zone District

April 2021

See  
"Larimer County Zoning Districts Map  
Estes Valley Planning Area"

The information on this map is designed for general planning purposes. It is not intended for appraisal, engineering, legal or other purposes. Larimer County makes no guarantee as to the accuracy or usefulness of this information other than for its intended use by the Larimer County Community Development Department. The Community Development Department welcomes comments concerning the accuracy of the information depicted on this map in order to continually improve its database.