



**COLORADO
WATER CENTER**
COLORADO STATE UNIVERSITY

Colorado Water 101

Watershed Health and Instream Flows

October 18, 2023

Jennifer Gimbel

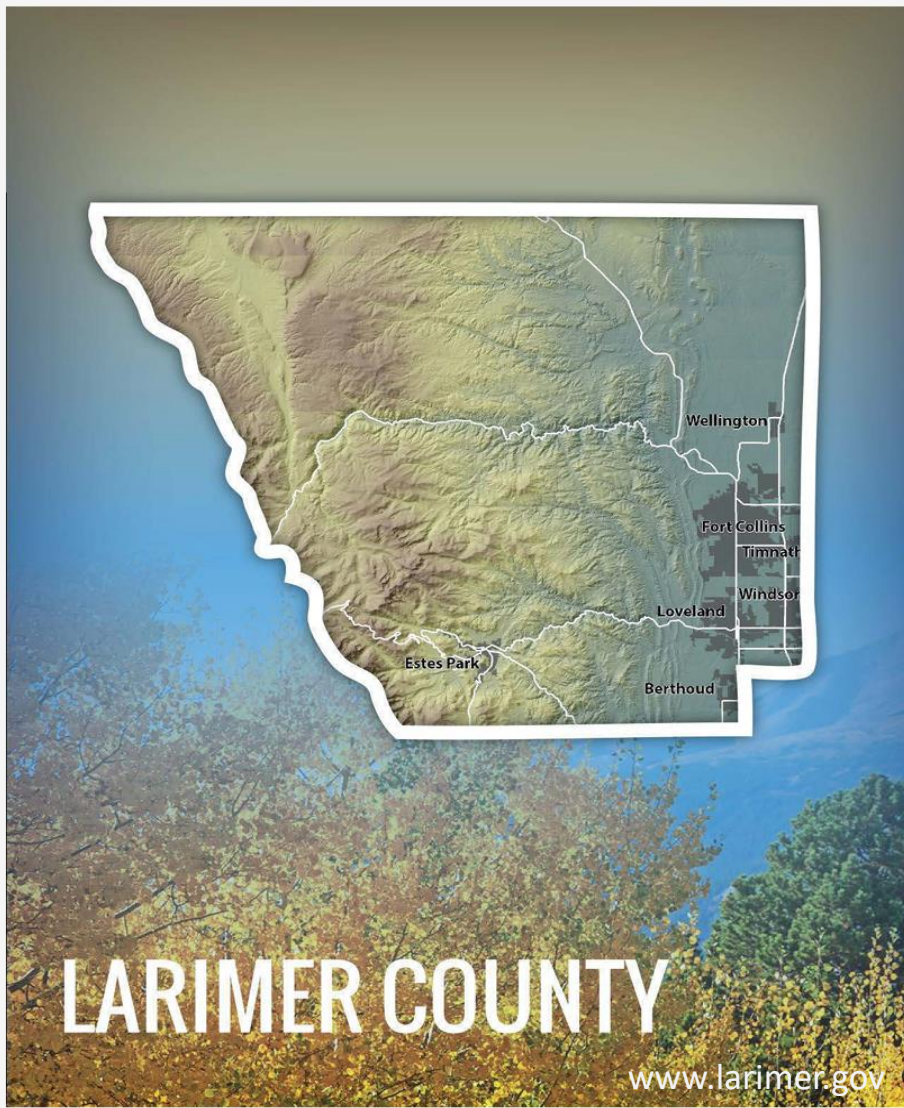
Colorado Water Center



**ENGAGEMENT
AND EXTENSION**
COLORADO STATE UNIVERSITY

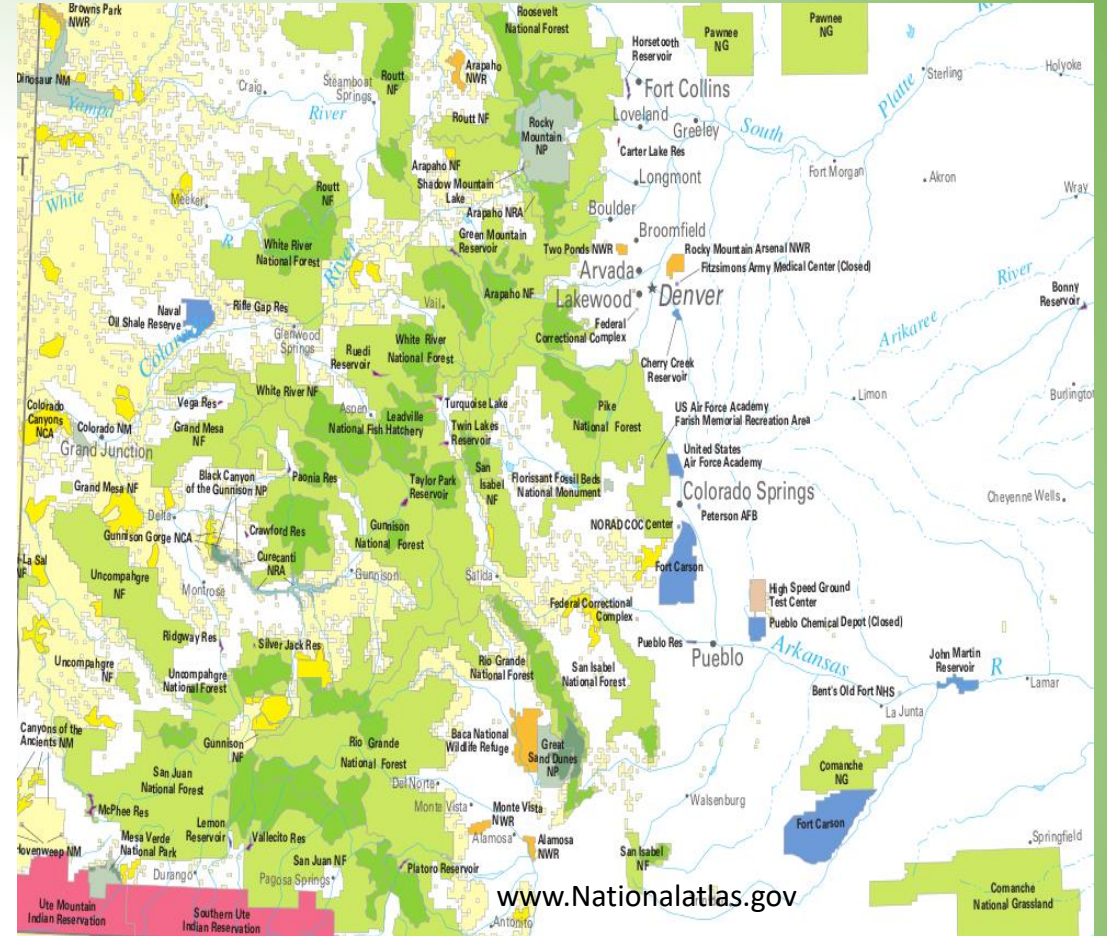
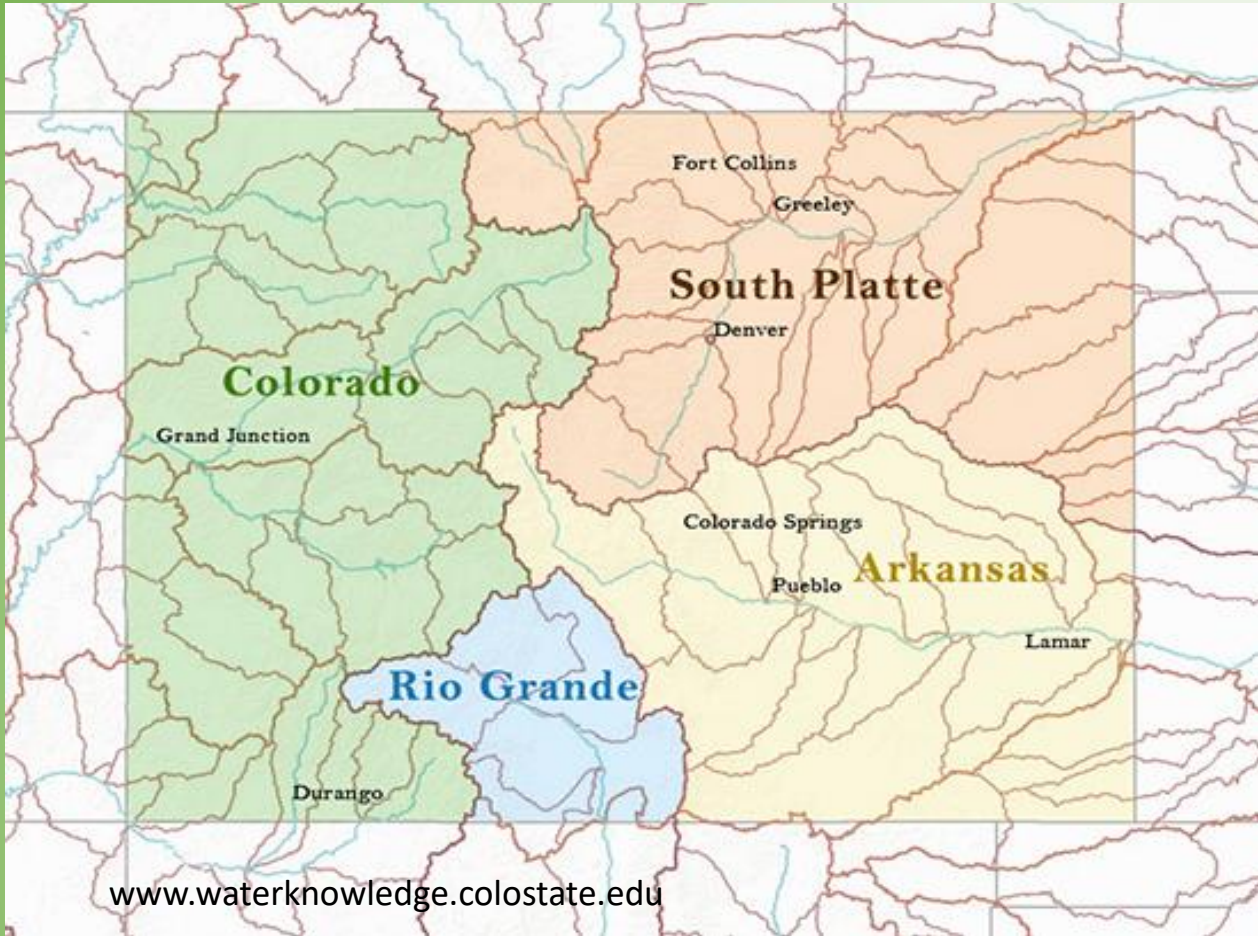
Topics

- What is a watershed and why do I care?
- Main watersheds in Colorado and Larimer County
- Water supply for Larimer County
- Instream flow rights



What is a Watershed?





Colorado Watersheds

Why Do I Care? Healthy Watersheds



www.downtownloveland.org



www.commons.wikimedia.org



Cache la Poudre National Heritage Area
www.nps.gov



www.larimer.gov

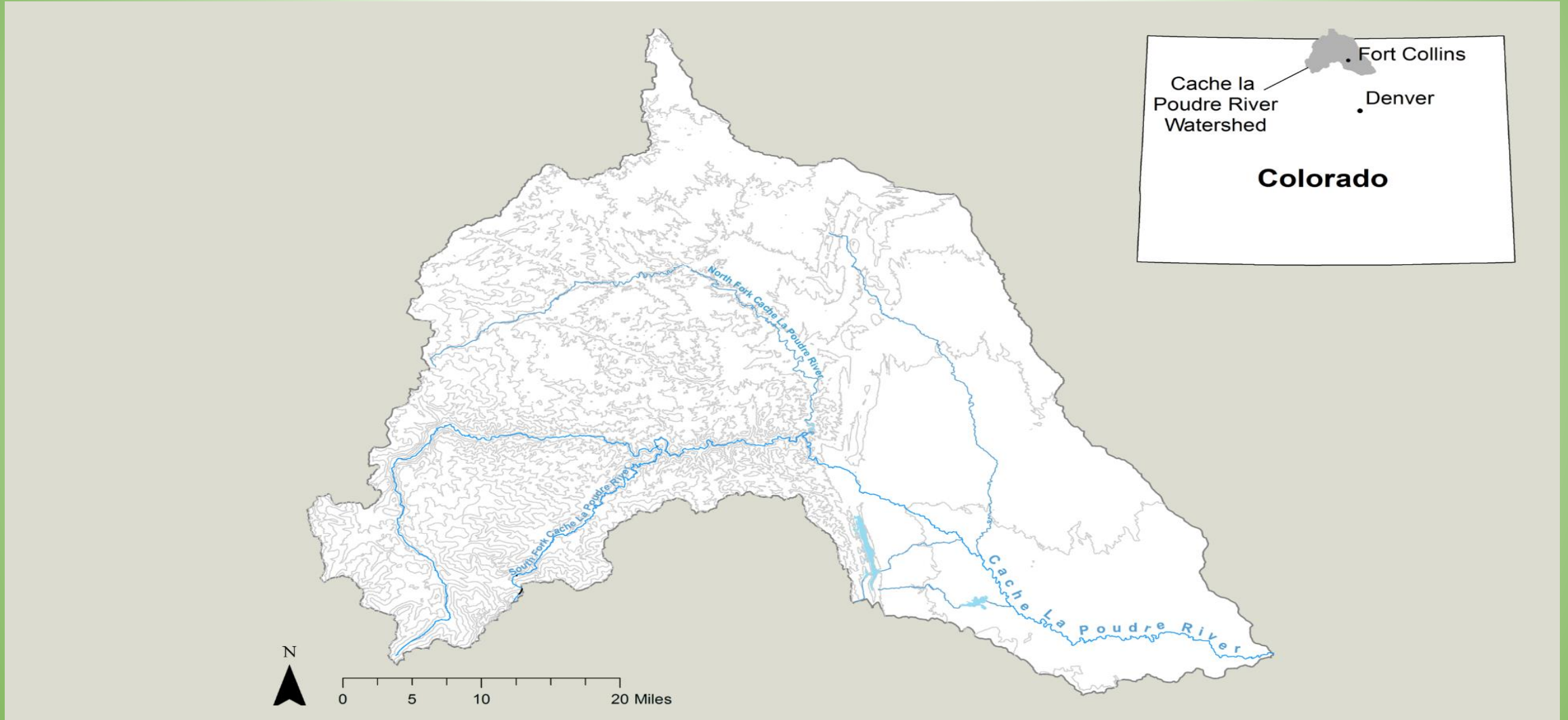


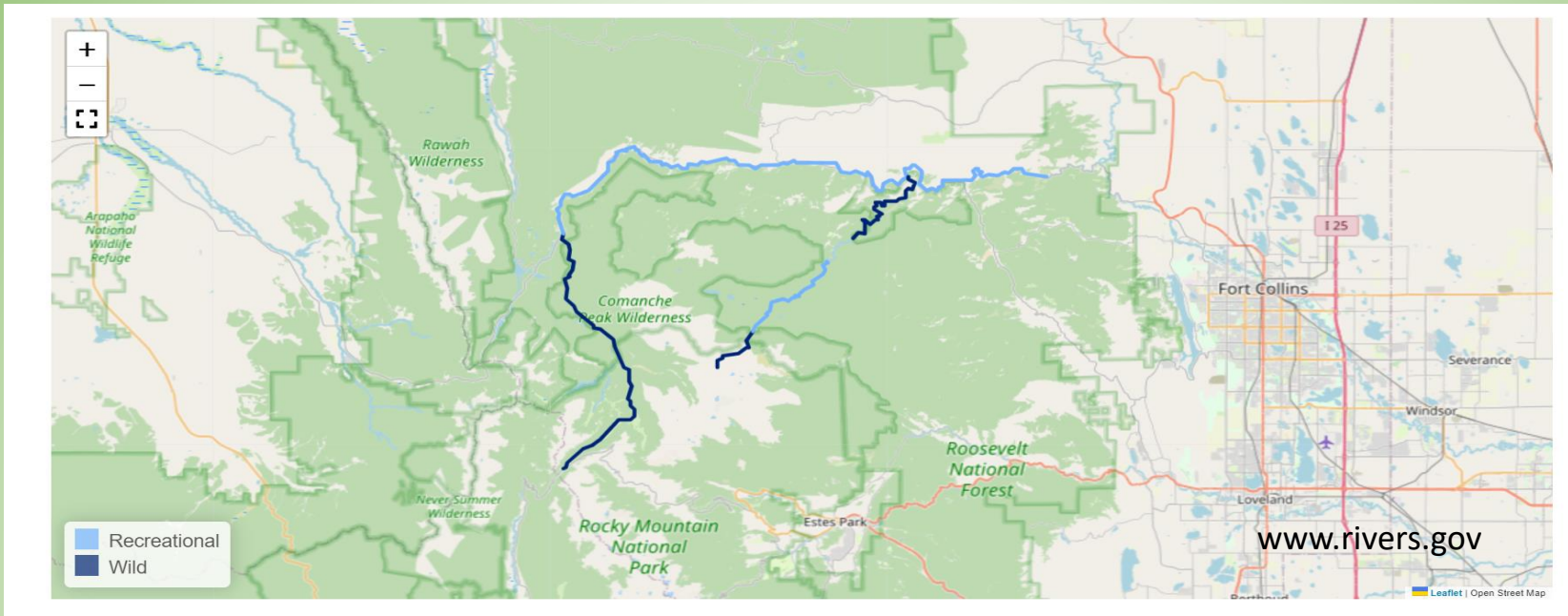
Poudre River Whitewater Park
www.fcgov.com



www.larimer.gov

Poudre River Watershed





Cache la Poudre Wild & Scenic River

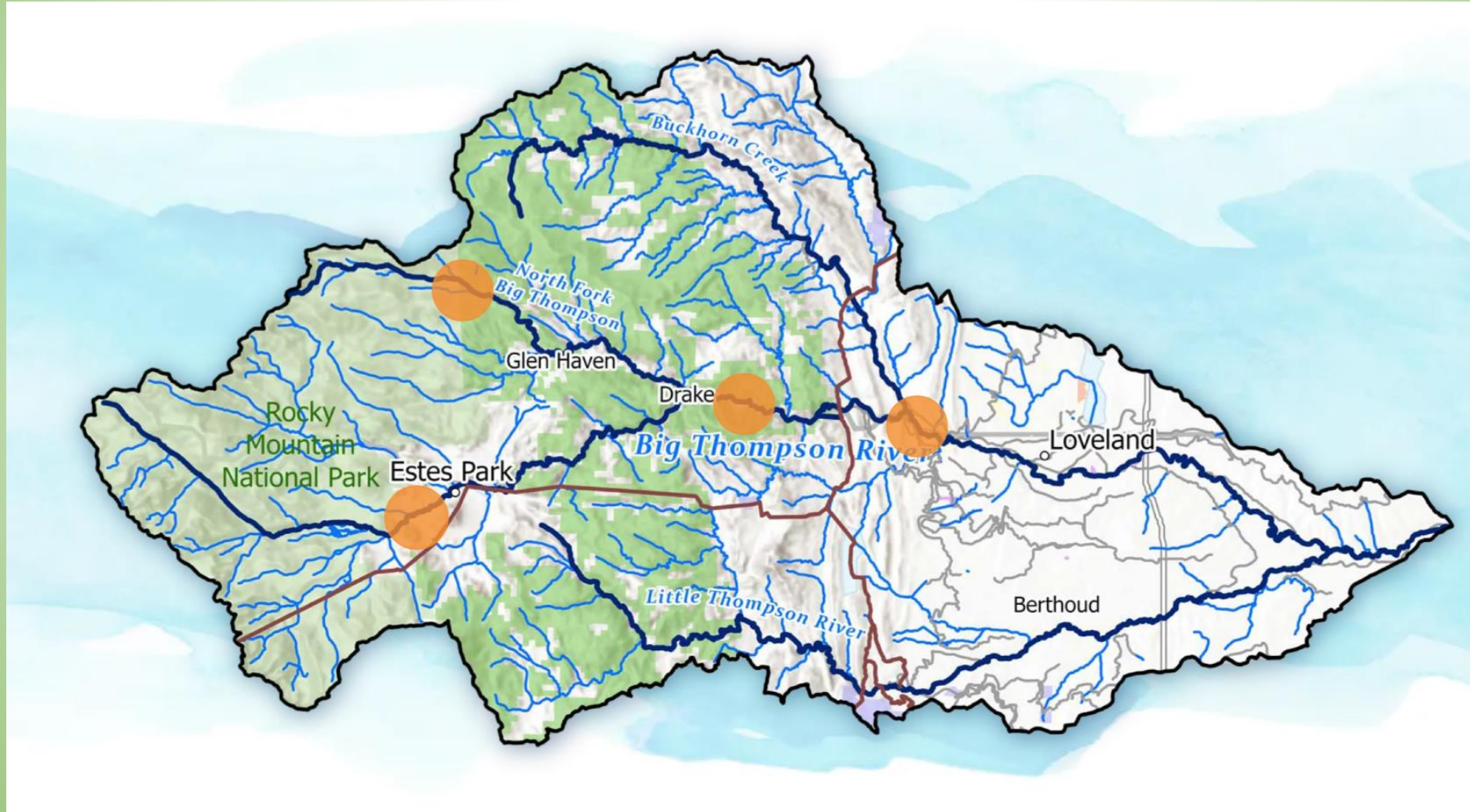


www.fs.usda.gov



www.fs.usda.gov

Big Thompson Watershed



Big Thompson Floods

1976

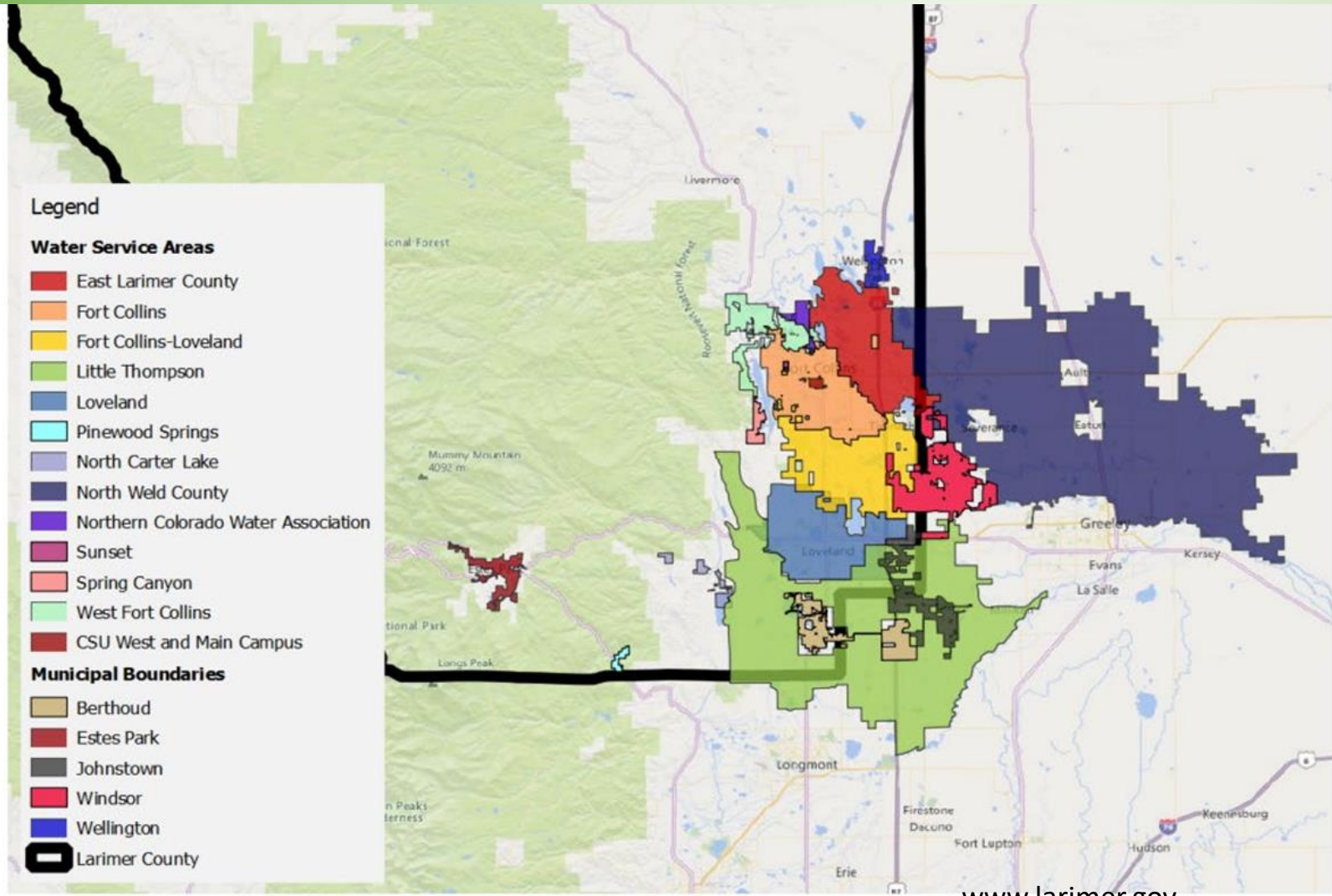


Source USGS

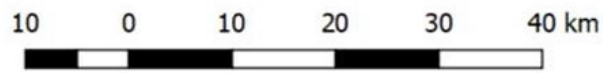
2013



www.lovgov.org



- Legend**
- Water Service Areas**
- East Larimer County
 - Fort Collins
 - Fort Collins-Loveland
 - Little Thompson
 - Loveland
 - Pinewood Springs
 - North Carter Lake
 - North Weld County
 - Northern Colorado Water Association
 - Sunset
 - Spring Canyon
 - West Fort Collins
 - CSU West and Main Campus
- Municipal Boundaries**
- Berthoud
 - Estes Park
 - Johnstown
 - Windsor
 - Wellington
 - Larimer County



www.larimer.gov

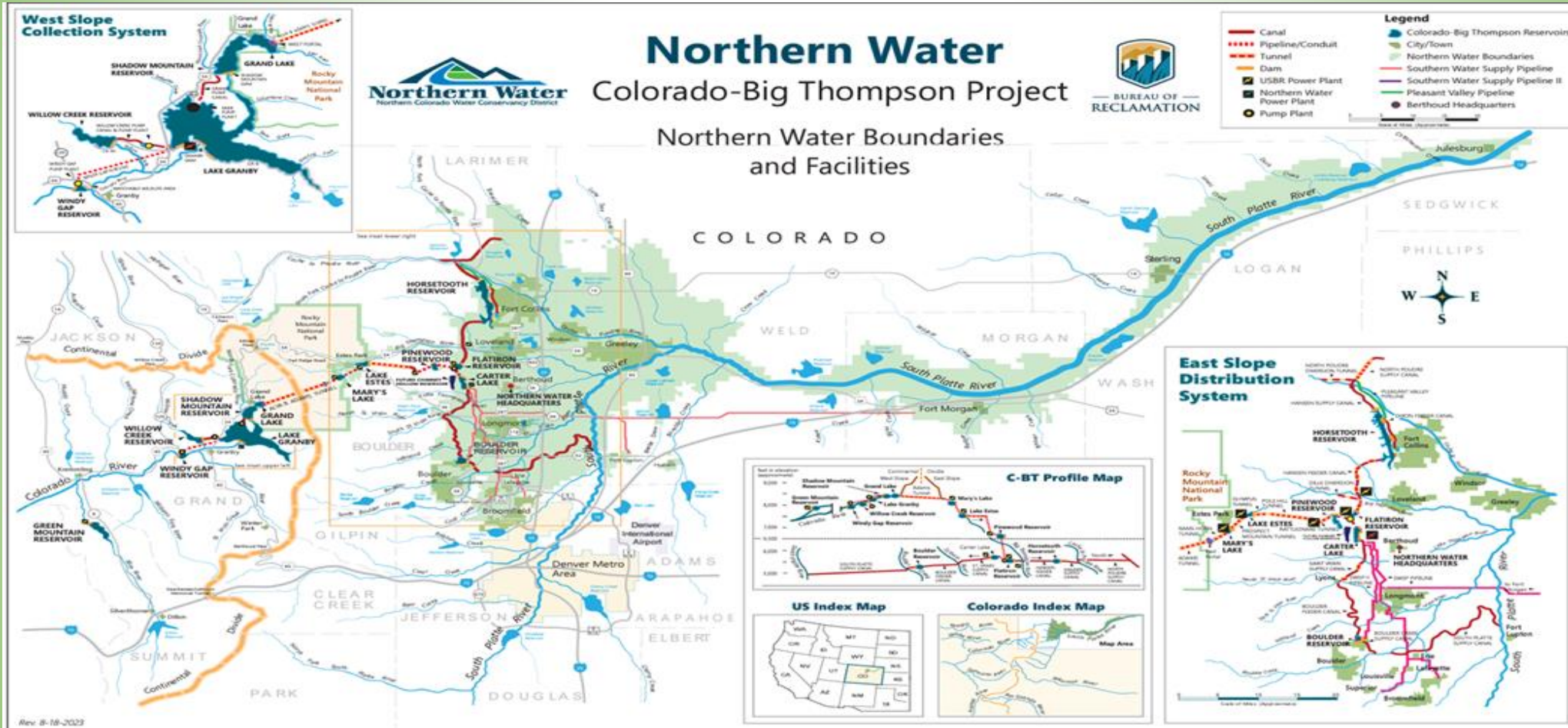


Where Does Larimer County Get Water?



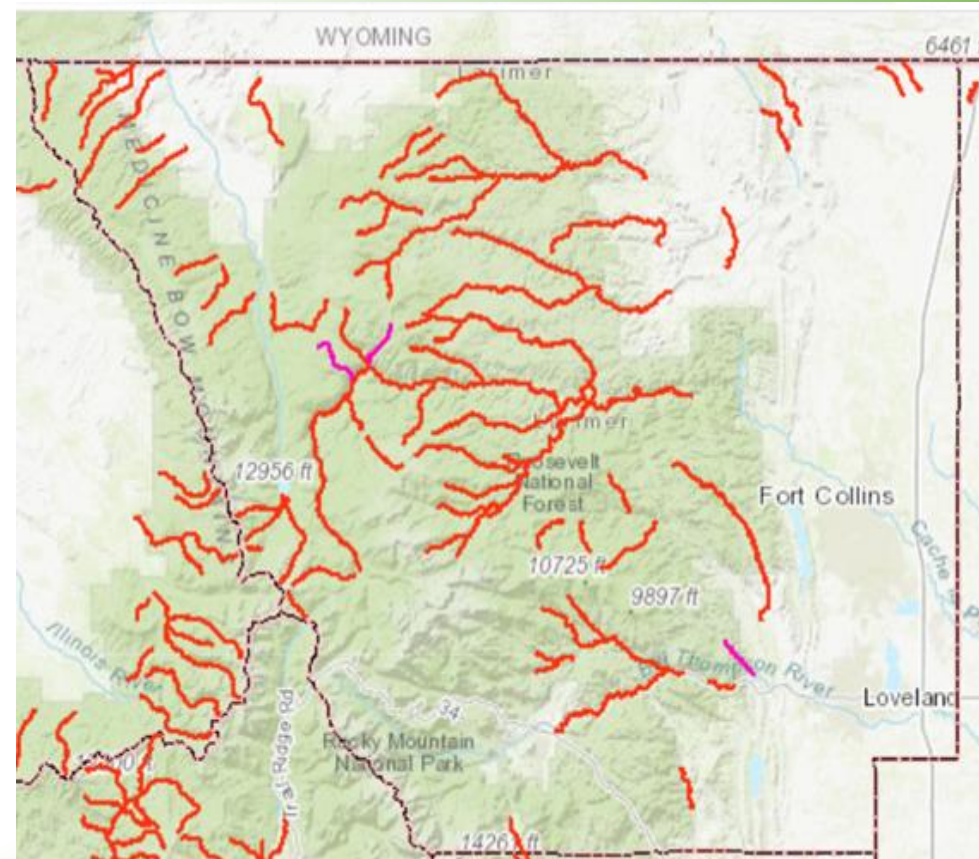
FIGURE 17. COMMUNITY WATER SYSTEMS SERVING LARIMER COUNTY

Transbasin Water from Colorado River



Instream Flows

- Originally a water user had to divert water to obtain a water right.
- In 1973 the General Assembly recognized the need to “correlate the activities of mankind with some reasonable preservation of the natural environment.” Subject to prior water rights
- Colorado Water Conservation Board is the only entity that can own an instream flow right.





**COLORADO
WATER CENTER**
COLORADO STATE UNIVERSITY