



Larimer County – Water Series

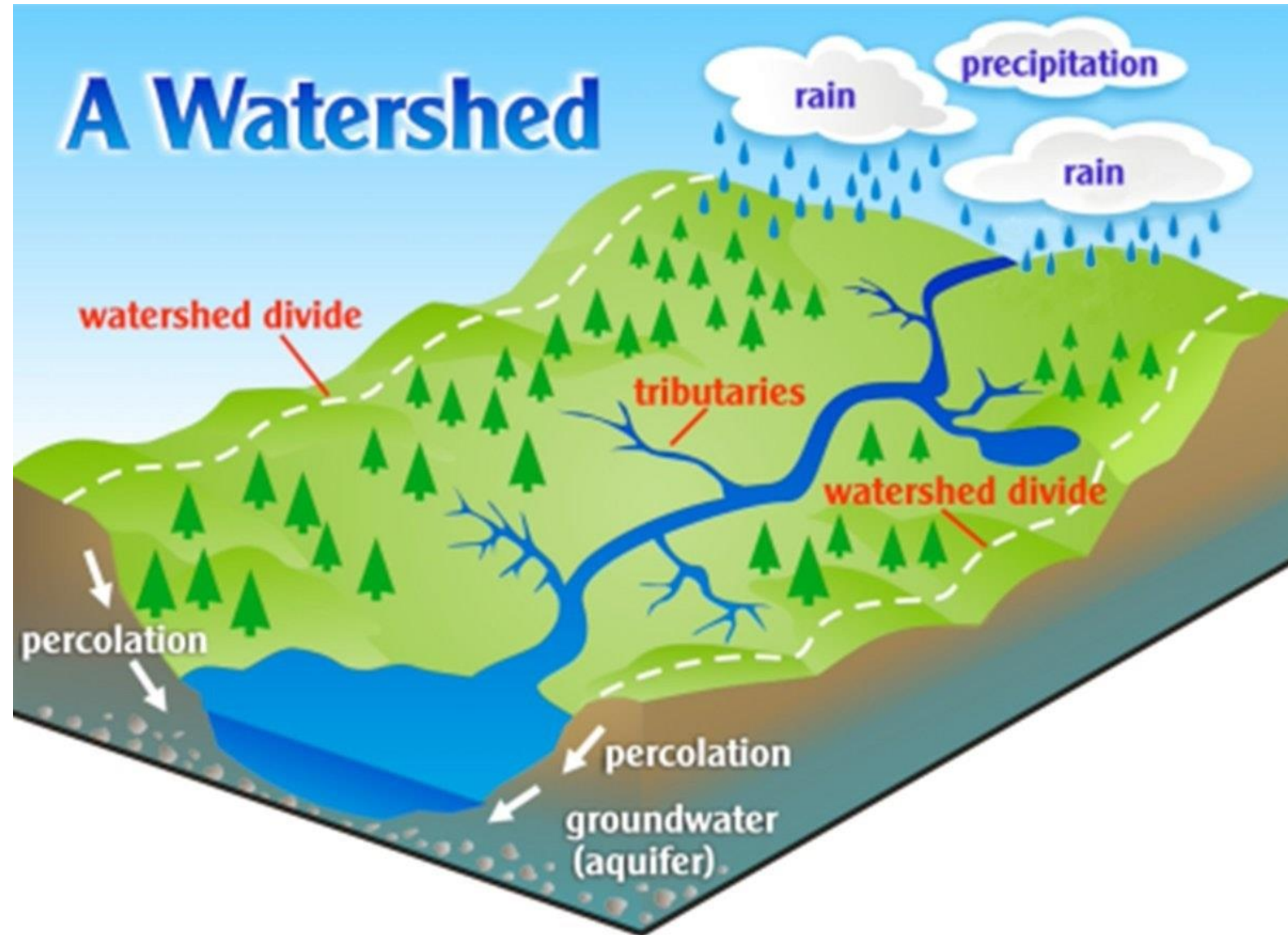
October 18, 2023

Laura Quattrini
Director



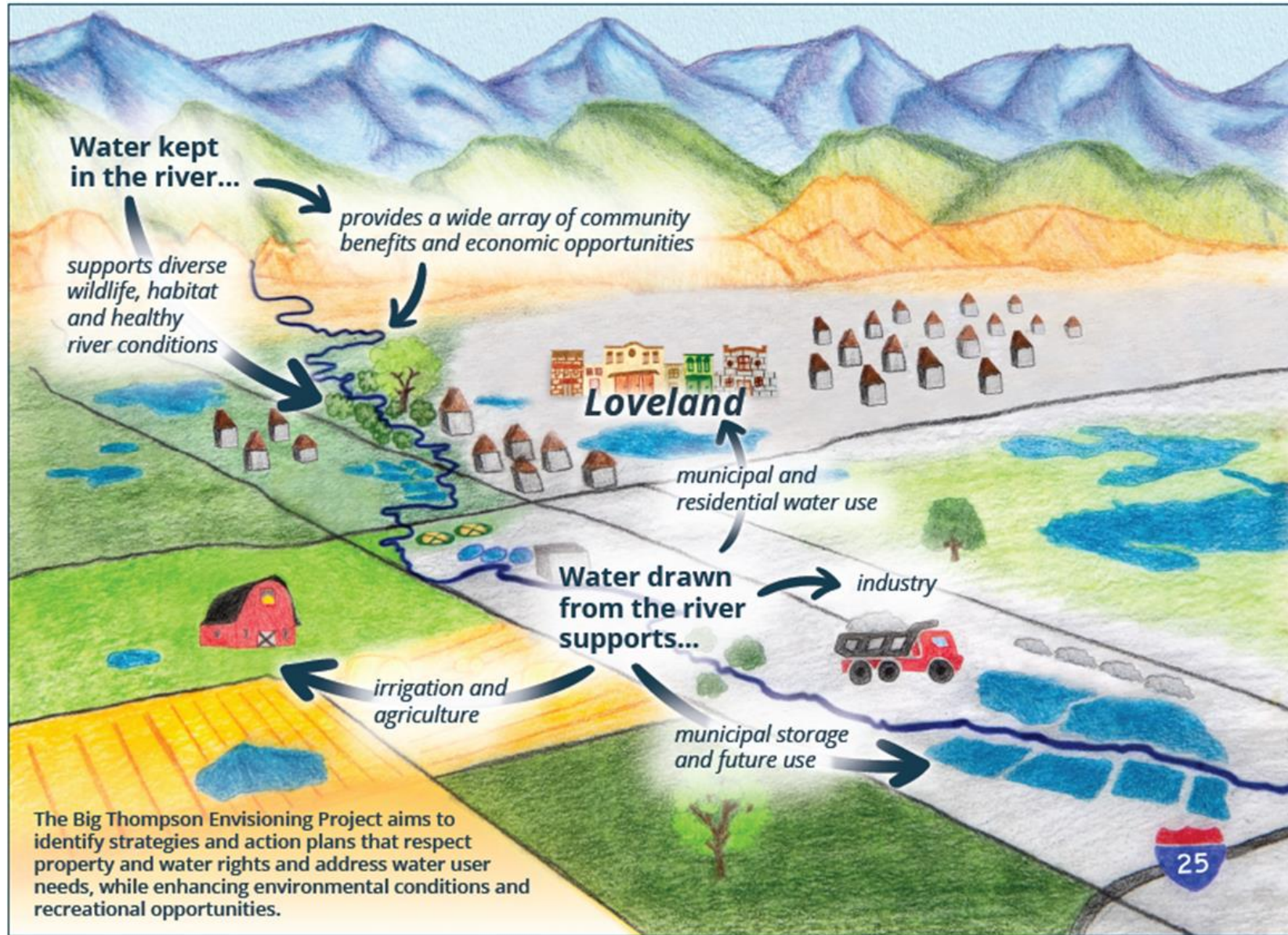
What is a Watershed?

A watershed is a land area from which surface water drains into a common stream channel, lake, reservoir, or other body of water.



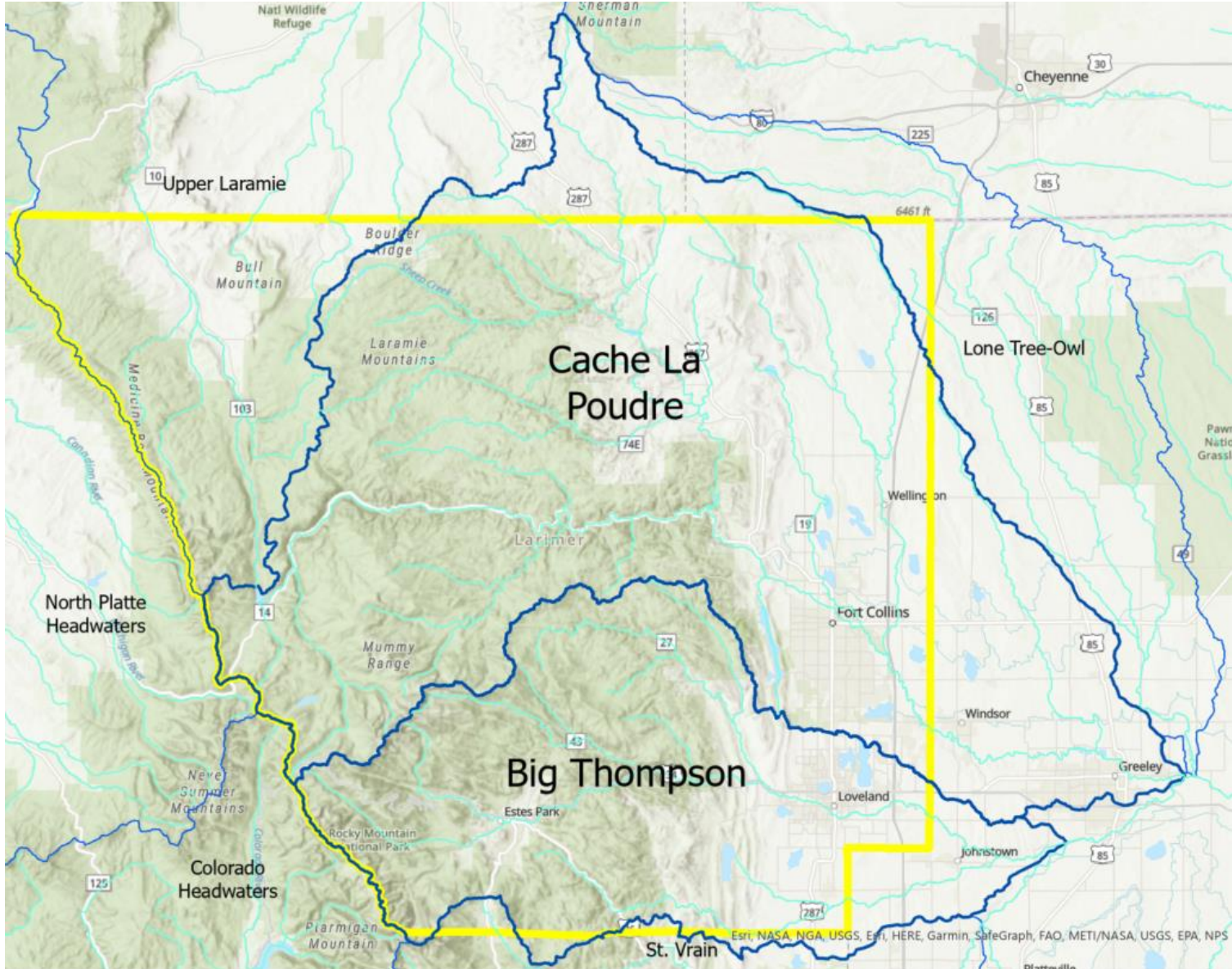


Why are healthy watersheds important?





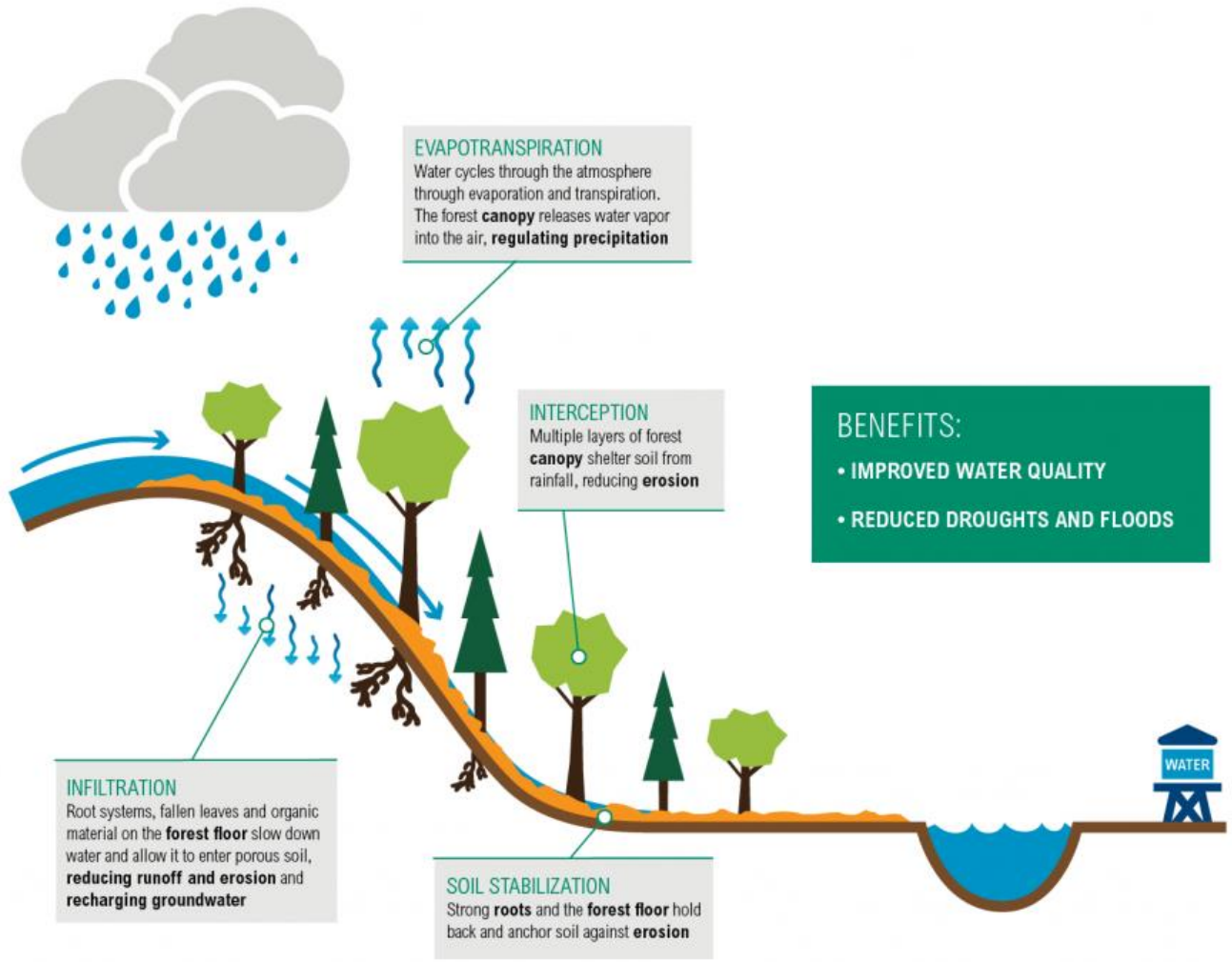
Larimer County Watersheds



Evan Barrientos



Forested watersheds protect water supplies!



Loveland Water and Power Source Water Protection Plan

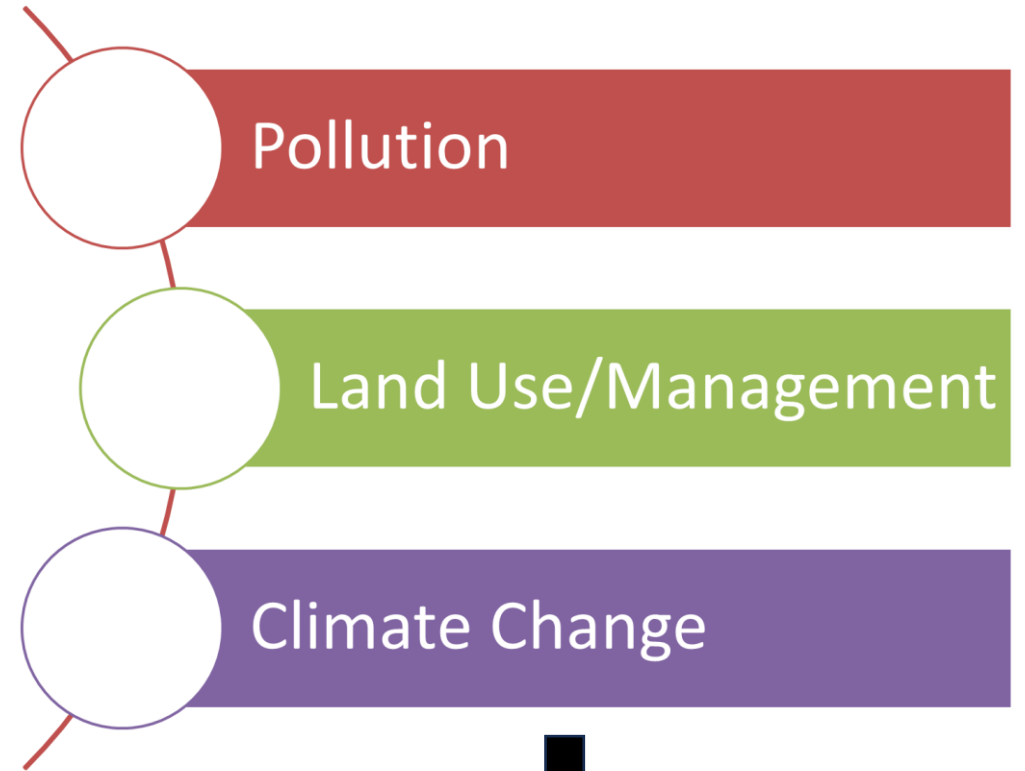
Larimer County, Colorado
July 2021



Written by: Amanda Simmons
Colorado Rural Water Association
For the Community Water Provider:
City of Loveland
PWSID#135485



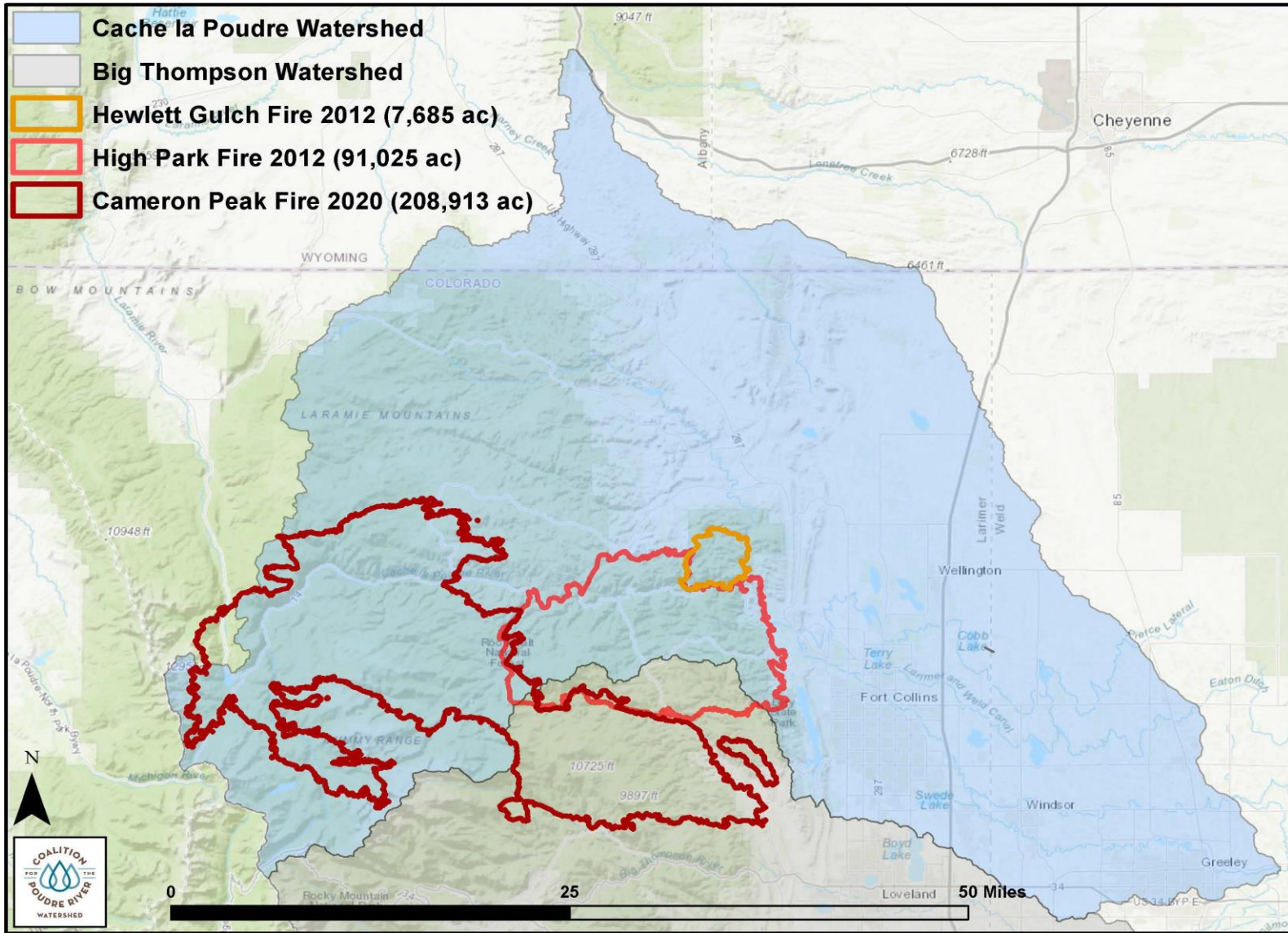
What can disrupt watershed health?



Wildfires, flooding, drought



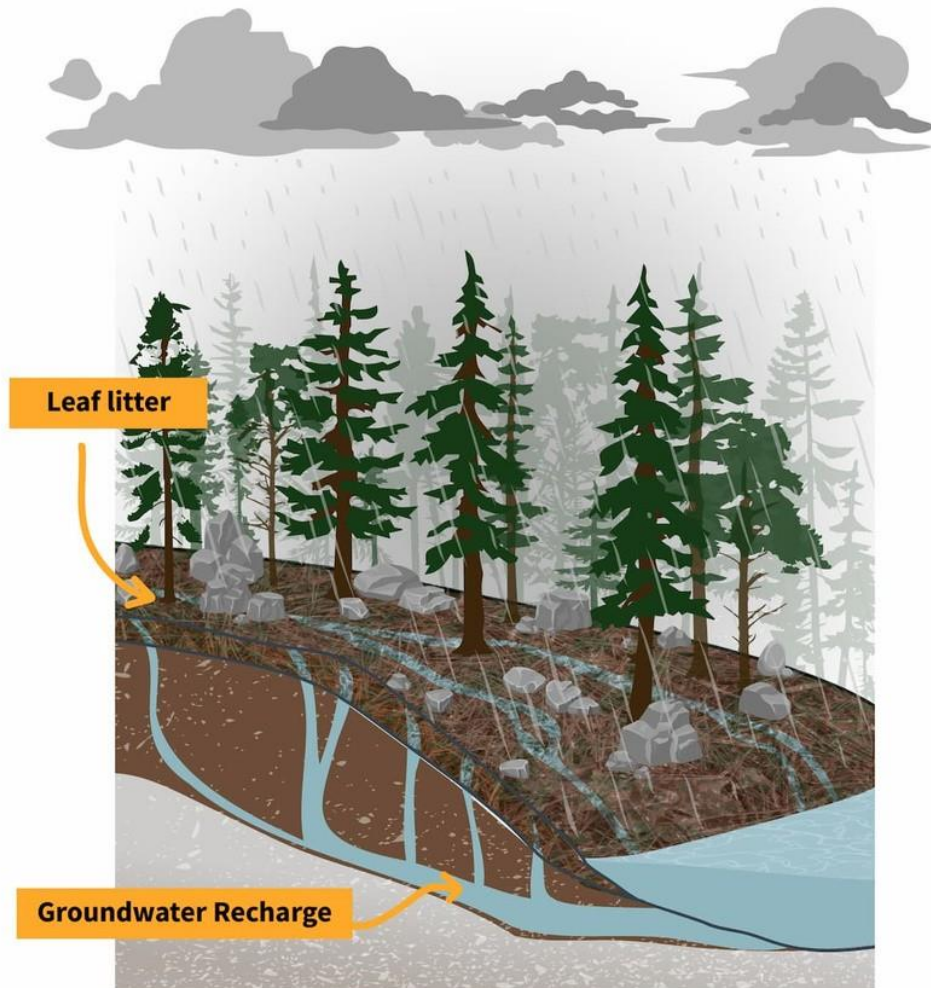
Wildfires over the past 10+ years



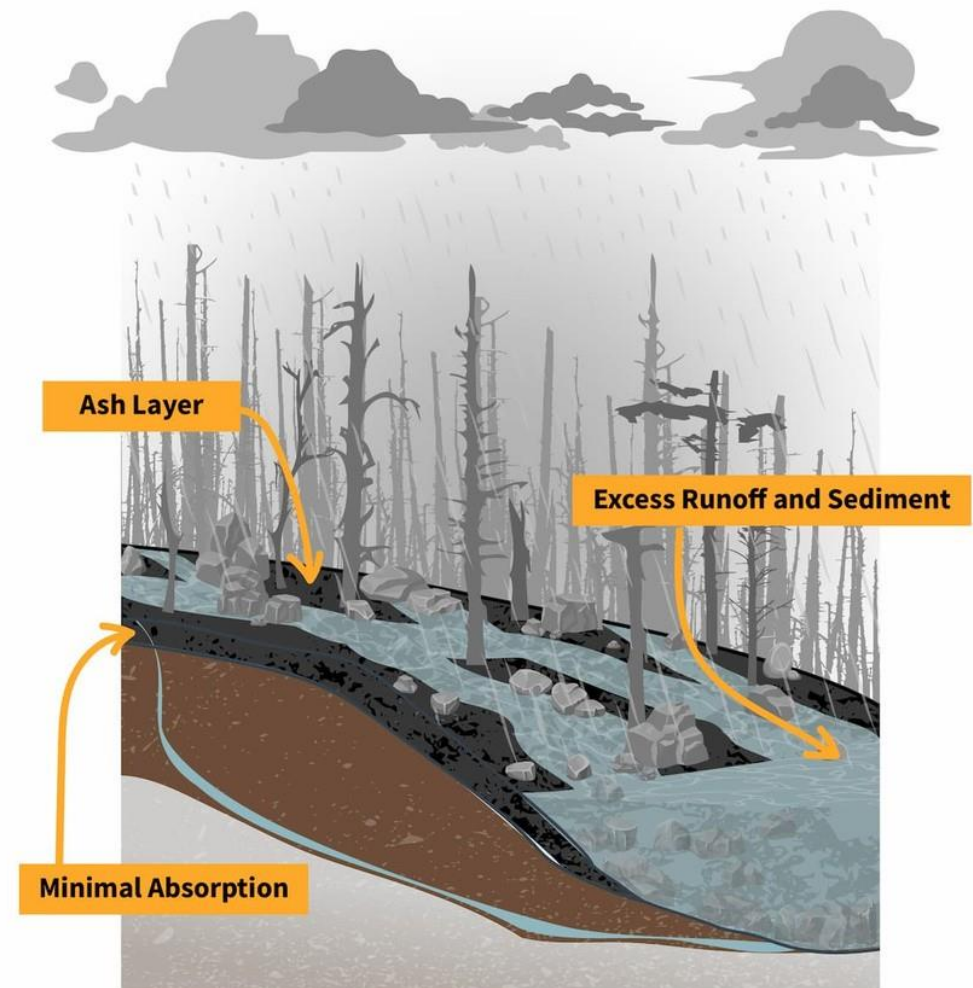


Wildfire impacts on the landscape

BEFORE FIRE



AFTER FIRE





Post-fire: Flooding and Sediment



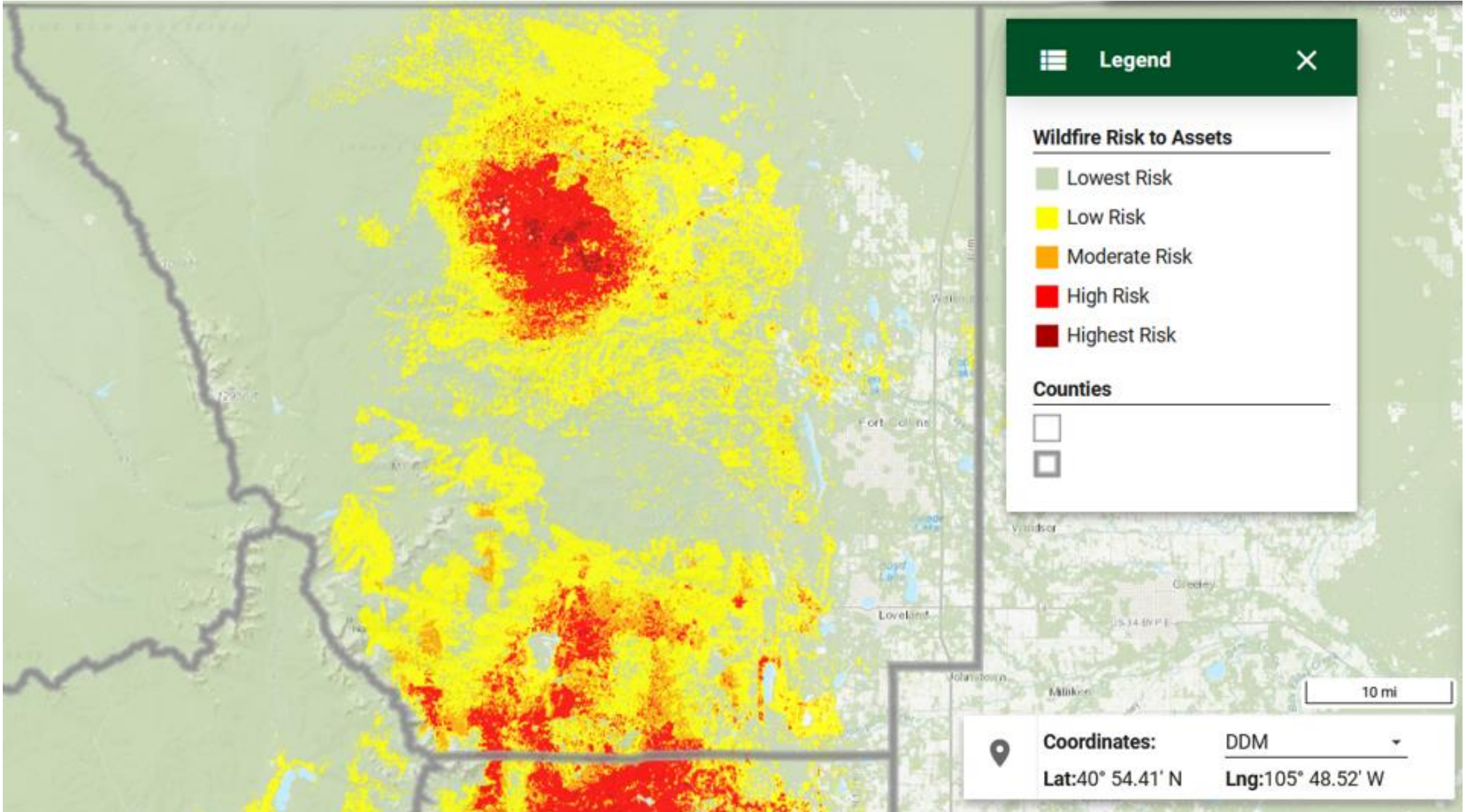


Long-Term Impacts





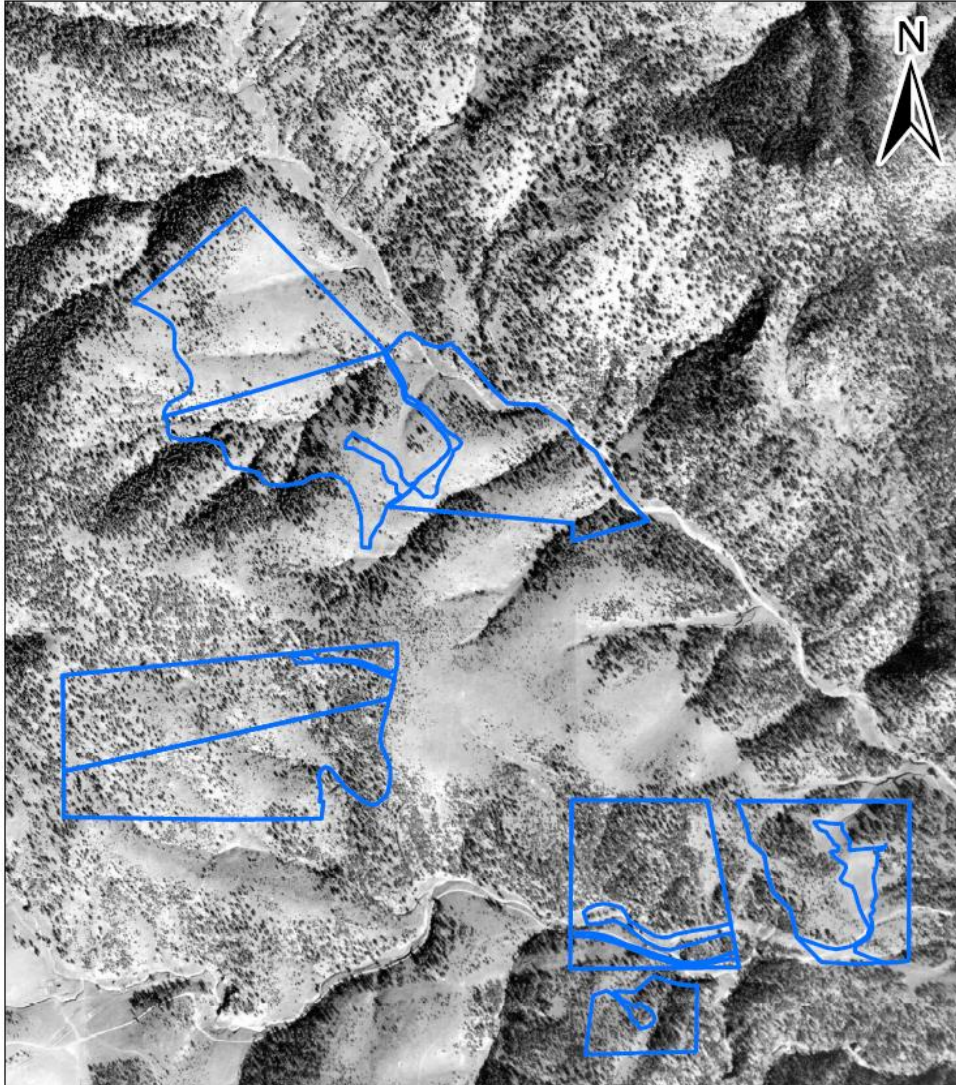
Wildfire Risk and Mitigation



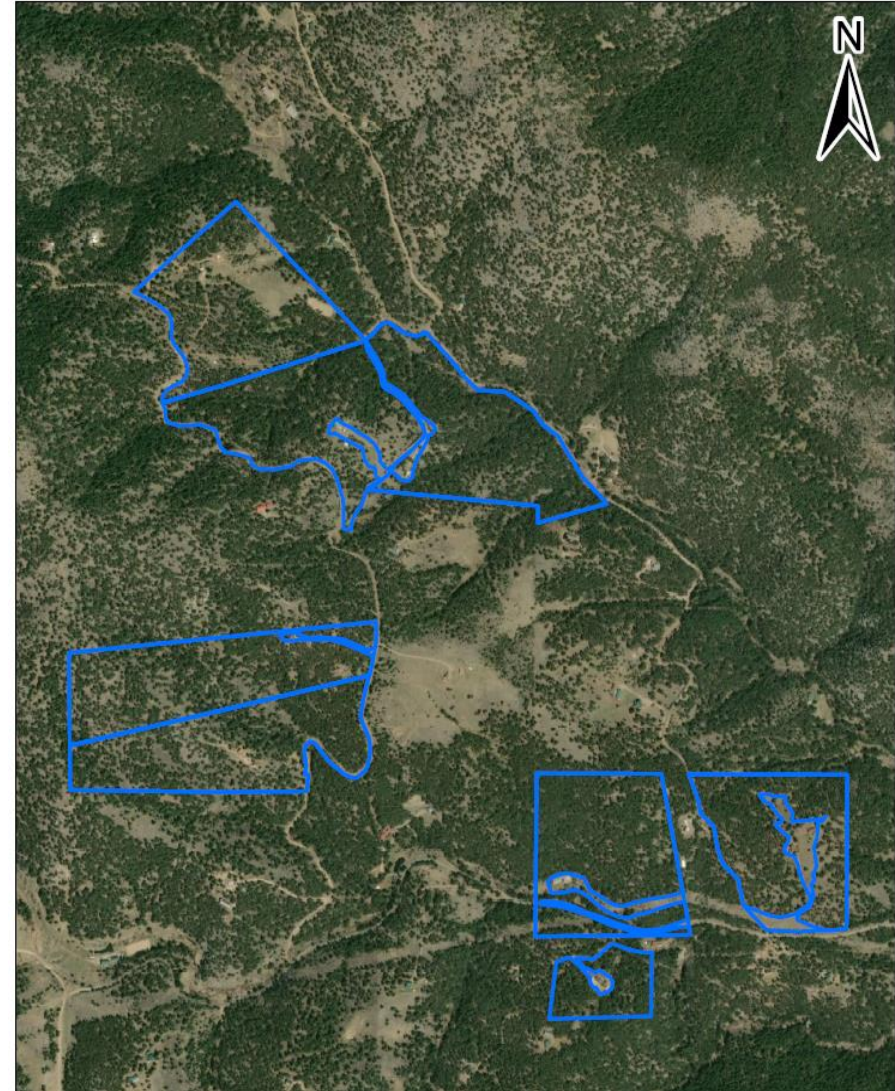


Wildfire Risk and Mitigation

1940 Forest Structure

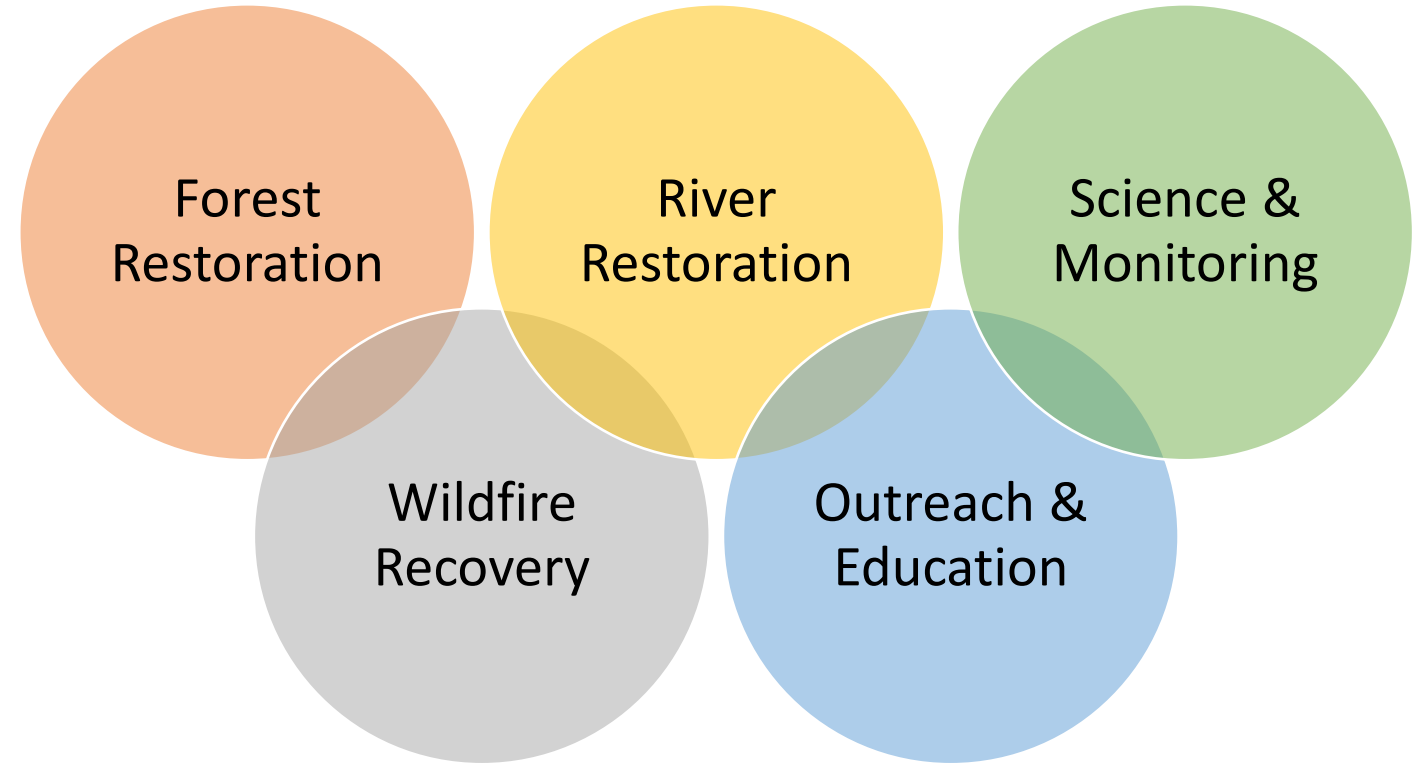


2017 Forest Structure





How are CPRW & BTWC helping?



BIG THOMPSON
WATERSHED COALITION





SHARED VISION

Healthy and resilient Northern Colorado watersheds that can support wildfires without causing long term damage to watershed services and communities.



QUESTIONS?



www.bigthompson.co



www.poudrewatershed.org