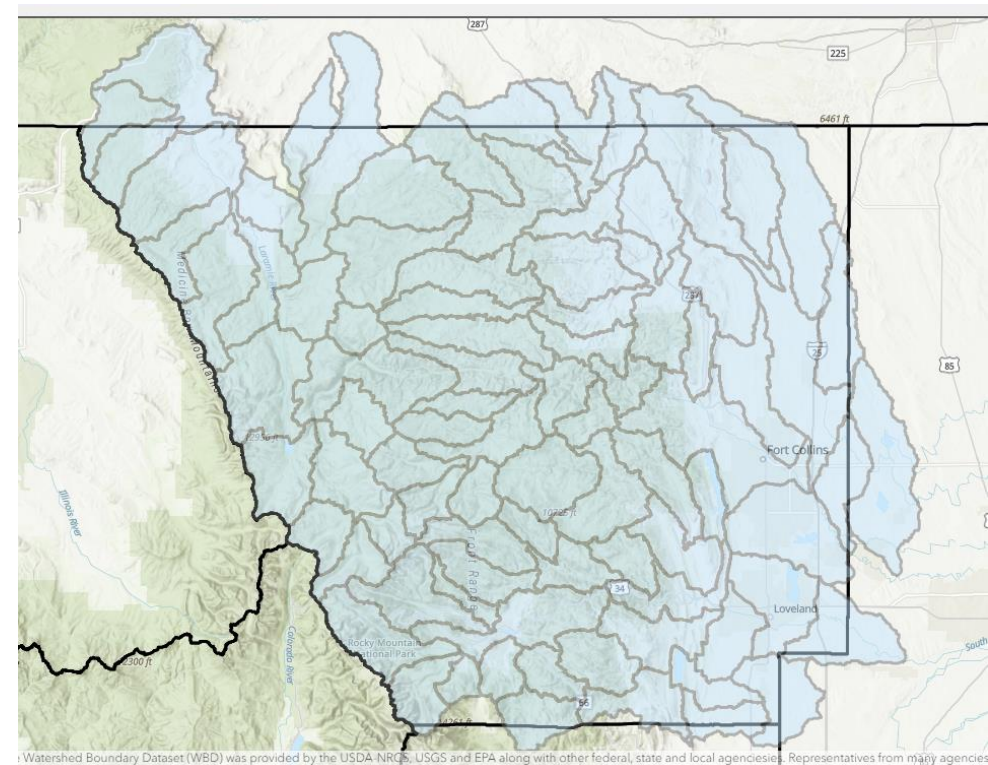
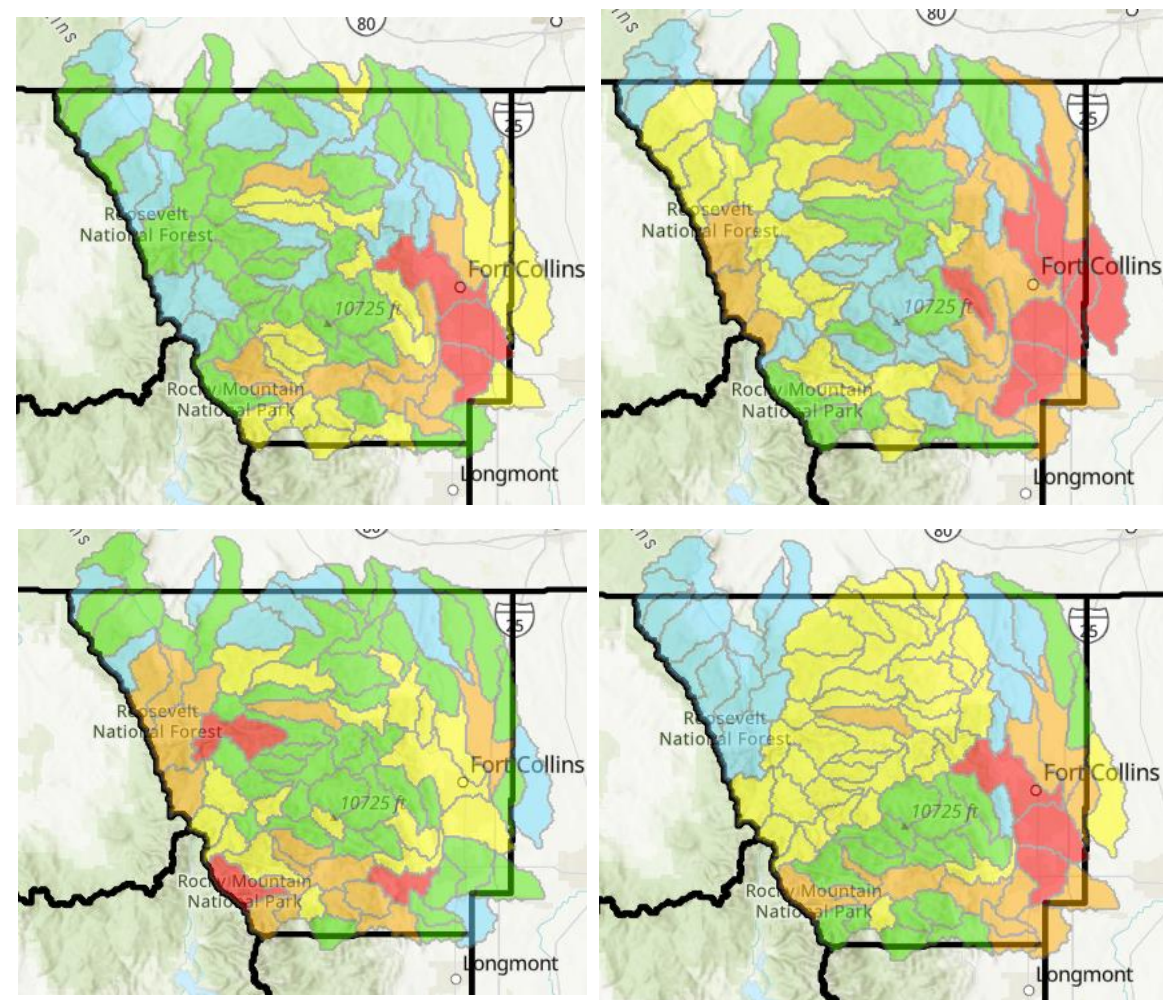


How to Interpret the Maps on Posters 5 – 8

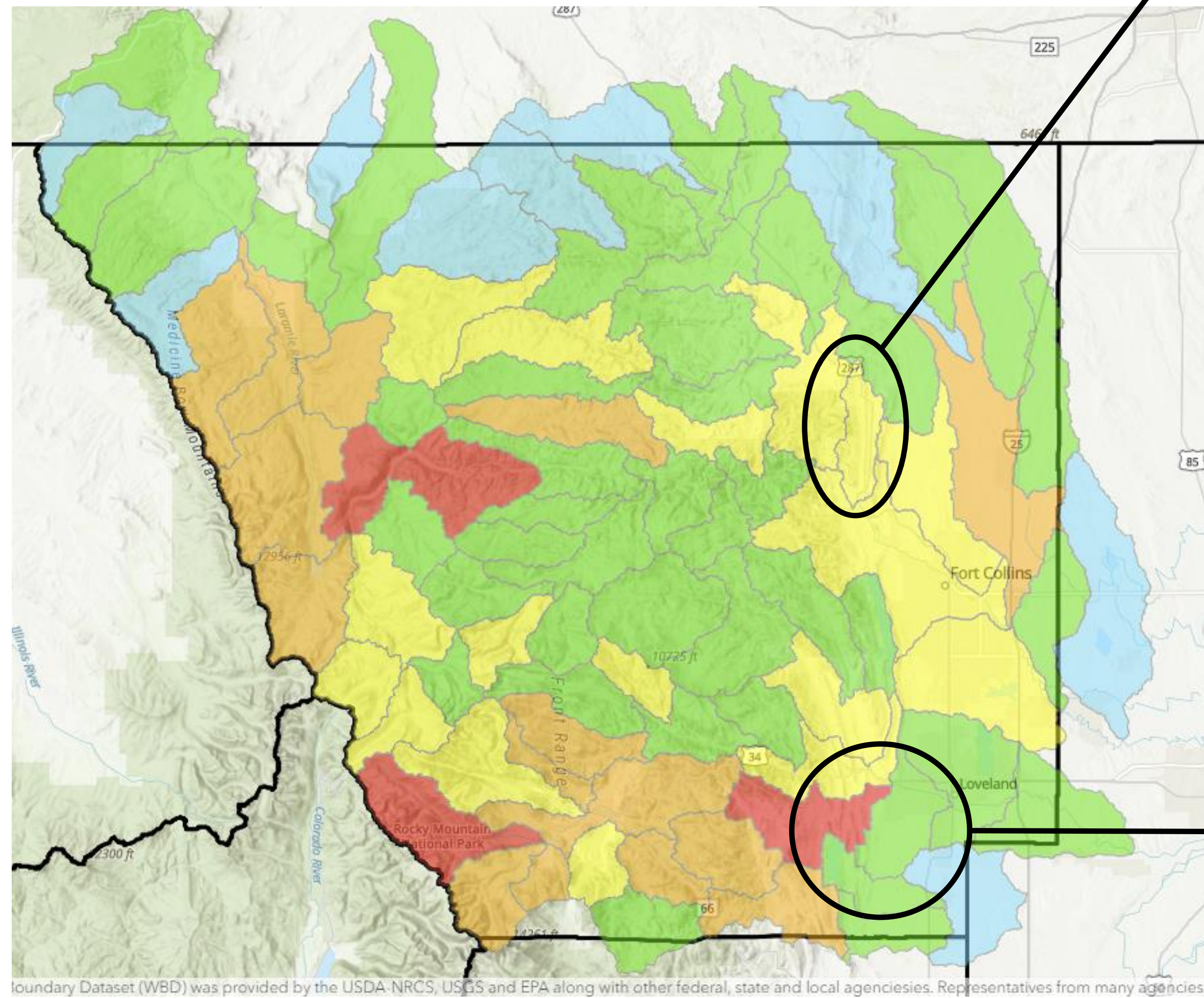
What is the purpose of these maps?

These maps show water-related risks and vulnerabilities to Larimer County watersheds. By aggregating these maps, the team can create a comprehensive understanding of where potential hazards may occur, where Larimer County should start to prioritize efforts related to water resources, who needs to be involved in the decision-making process, and ultimately help to inform long-term planning strategies.

Why are there so many maps?



Each colored map represents a different risk category (identified in Poster 4). When aggregated, these maps form an Overview map that offers a more comprehensive perspective, which will be used to inform the Water Plan. To digest the results, we recommend reviewing each category independently (please refer to posters 5 – 8).



Feedback form to provide topic-specific can be accessed here:

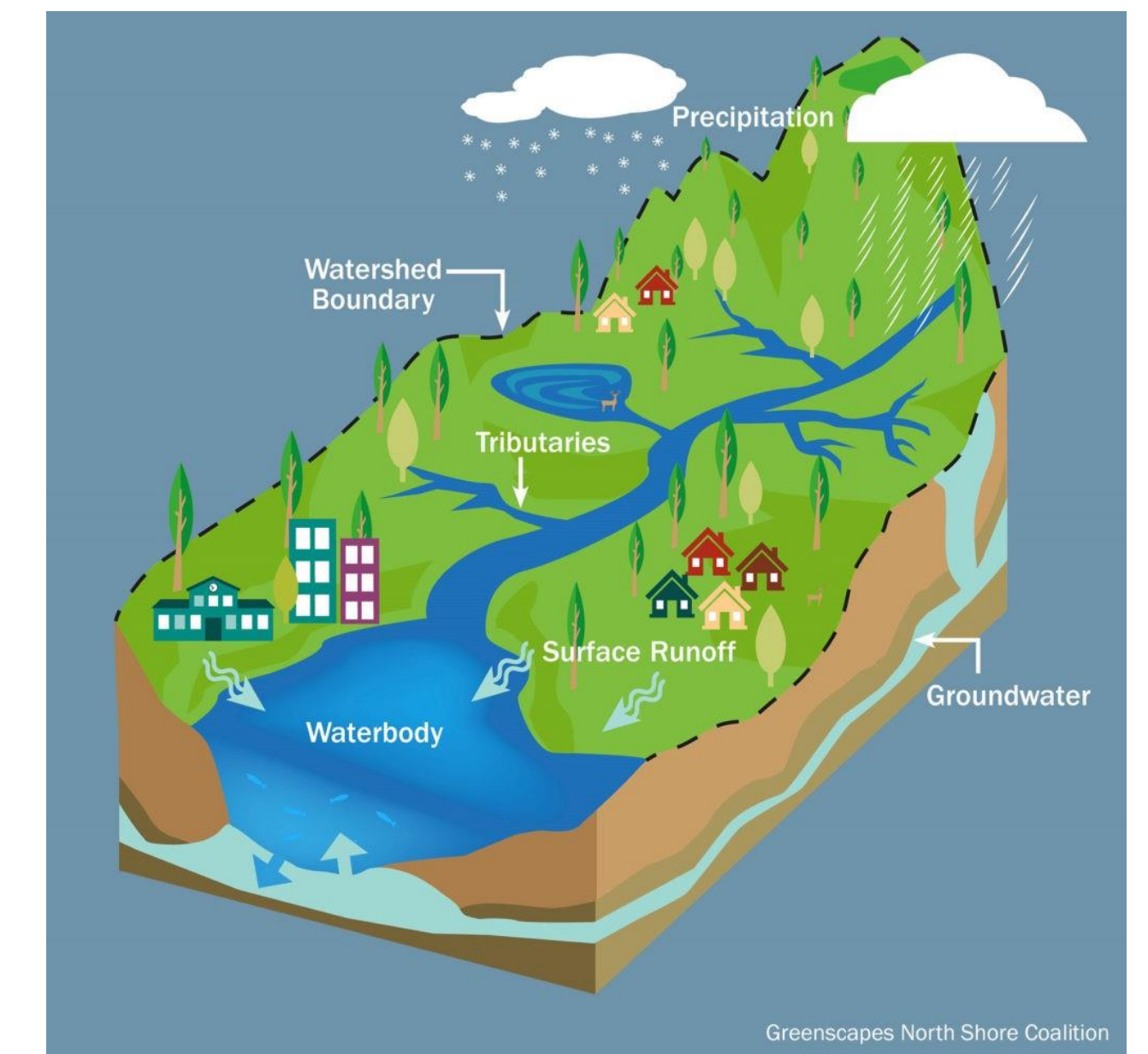


View the Water Plan website to learn more here:

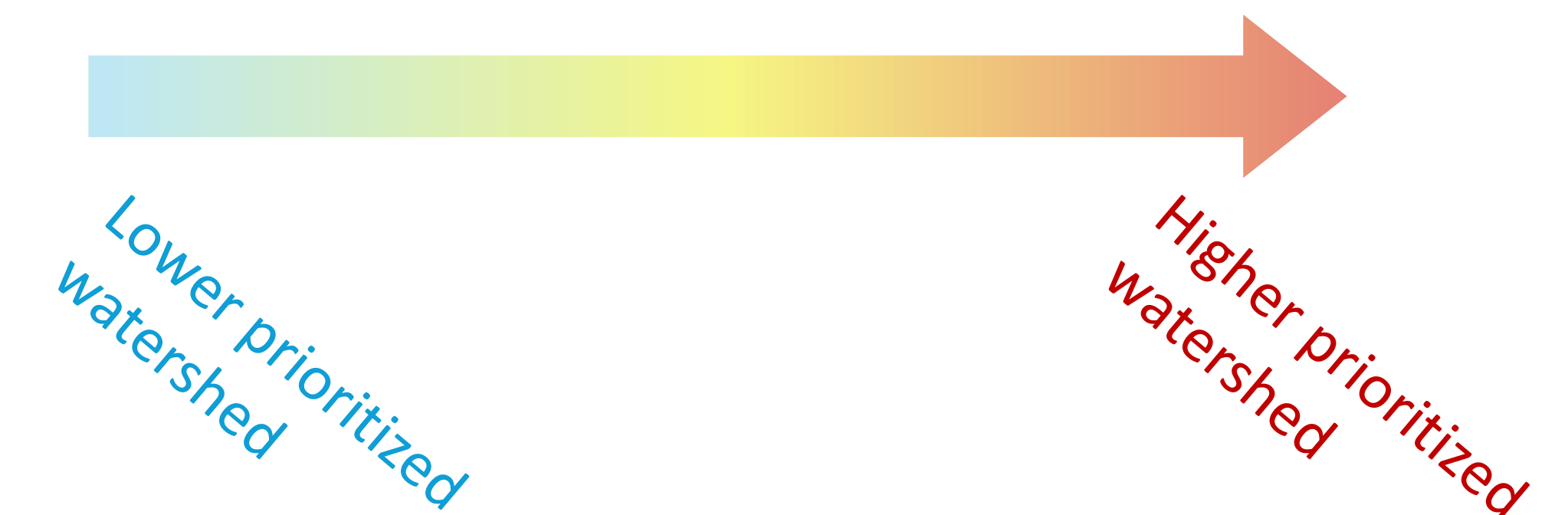


What is a watershed?

- An area of land where all the water that falls as rain or snow drains into a common waterway.
- It acts like a natural basin, collecting and channeling water to a central point.
- Watersheds are scalable. They can be as small as the ones shown on the map, all the way up to Country-wide watersheds, like the Missouri, or the Upper Colorado River Basin.



What do the colors mean?



Based on the compiling of the layers in the risk-category mapping assessment, some watersheds might need more timely treatment over others.