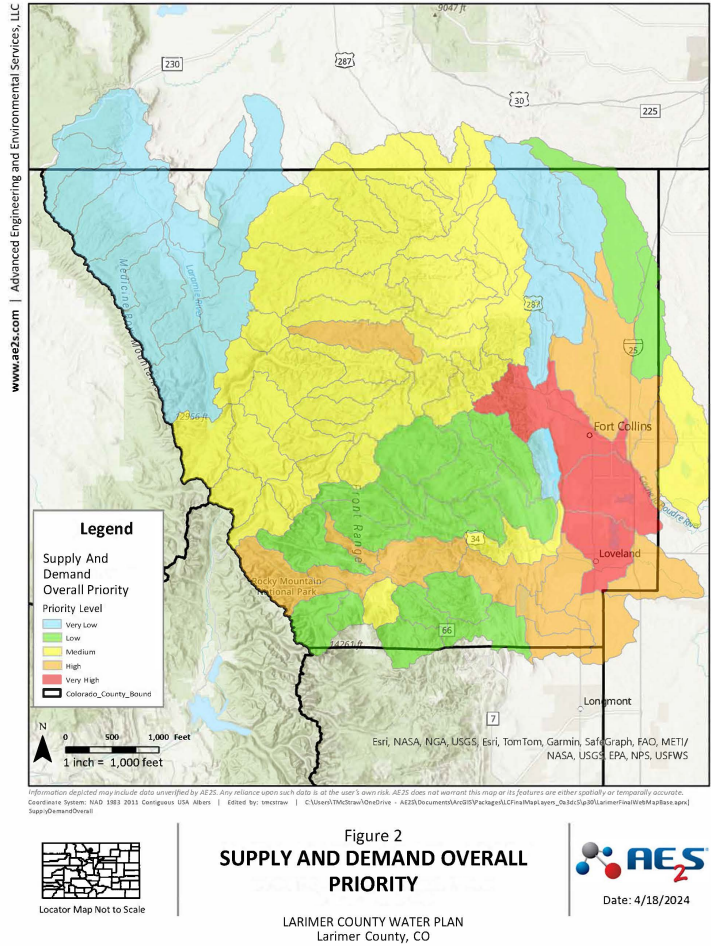
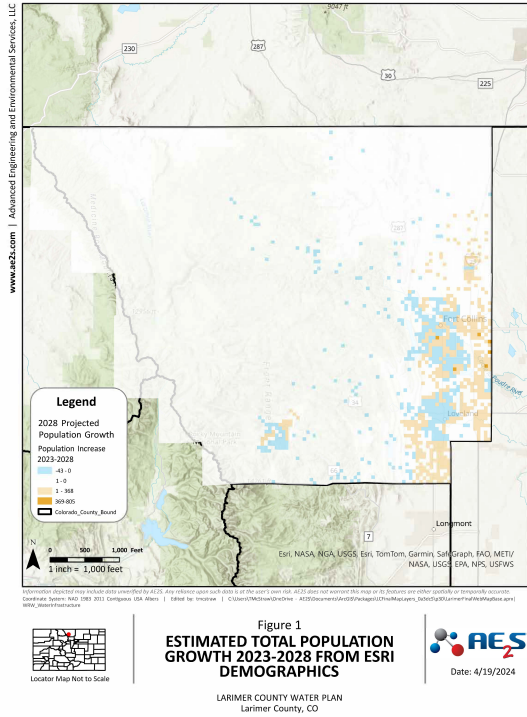


# 5 – Supply and Demand Planning



Supply and demand planning risk criteria that were summed to analyze overall priority level (Figure 2):

Supply and Demand Planning Risk Criteria	Metrics/Datasets
(1) Increased demand from population growth	Esri Demographics Data (Figure 1).
(2) Uncertain water futures as it relates to climate	Water sources' sensitivity to changes in temperature; modeled based on previous work by the Cities of Fort Collins and Greeley.
(3) Changes in land use	Total area of Commercial, Industrial, and Rural Residential Zoning.

- Higher priority watersheds are in the areas where active development is occurring, aligning with criteria 1 and 3 focused on demand growth.
- Slightly higher risk in the Upper Poudre basin due to previous studies indicating its sensitivity to increases in temperature.
- These data will aid the County to achieve the Water Plan's goal to **Align Land Use Planning with Water Resources**.



Feedback form to provide topic-specific can be accessed here:



View the Water Plan website to learn more here:

