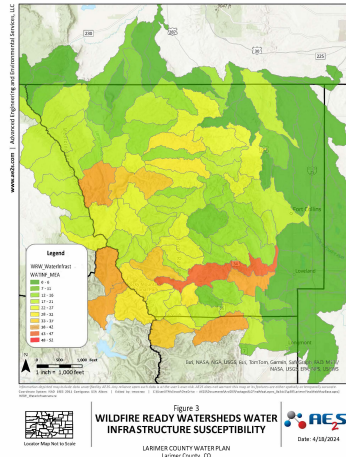
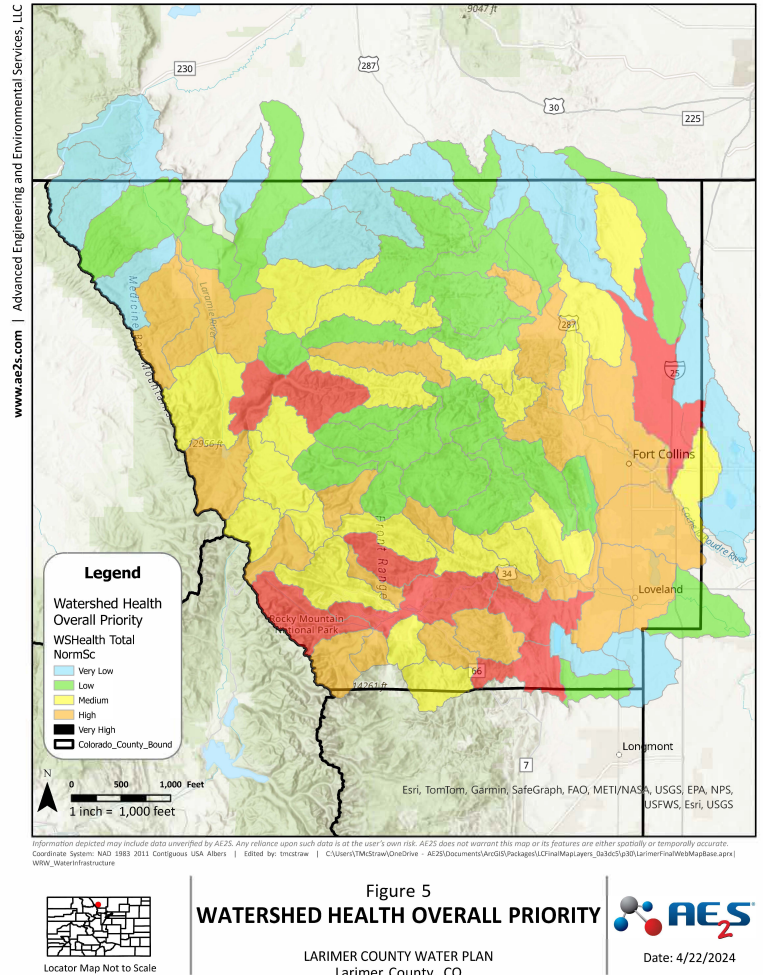
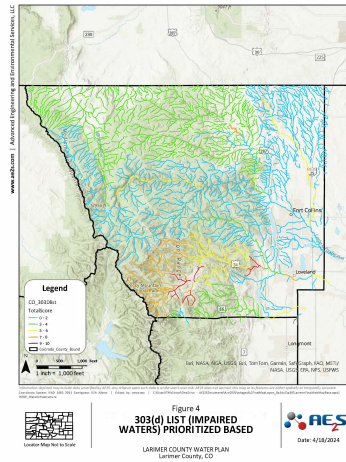


6 – Watershed Health and Natural Hazards

The Colorado Water Conservation Board (CWCB) Wildfire Ready Analysis (**Figure 3**) assesses locations where post-fire hazards could impact water supply infrastructure.



Under the Clean Water Act Section 303(d), each state develops a list of impaired waters due to one or more nutrients, contaminants, metals, or bugs. Each water source was given a score of 10 for each impairment and a score of 5 if it was listed as monitoring for that impairment (**Figure 4**).



Watershed health and natural hazards risk criteria that were summed to analyze overall priority level (**Figure 5**):

Watershed Health and Natural Hazards Risk Criteria	Metrics/Datasets
(1) High intensity wildfires	Results from CWCB Wildfire Ready Analysis (see Figure 3).
(2) Source water quality	Proximity to potential pollutants, 303(d) list of impaired waters (see Figure 4).
(3) Habitat	Total area of threatened wetlands, riparian areas, aquatic habitat, and endangered species habitat.

- Risk criteria in this category help to inform locations where natural hazards could have significant impacts to both human and animal life.
- The various metrics used in the habitat criterion provide a wide range of potential impacts if a minimum flow is not maintained in the river.
- These data will inform the County on where additional collaboration can occur in order to fulfill the Water Plan’s goals of **Protecting Watersheds from Hazards and Collaborating to Support Water Sustainability**.



Feedback form to provide topic-specific can be accessed here:



View the Water Plan website to learn more here:

