

8 – Infrastructure

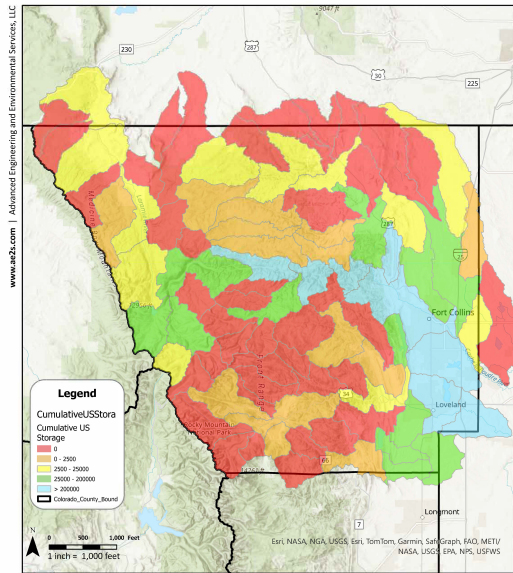


Figure 8
CUMULATIVE UPSTREAM NET
ABSOLUTE & CONDITIONAL DECREE
STORAGE (AC-FT)

LARIMER COUNTY WATER PLAN
Larimer County, CO



Date: 4/22/2024

Cumulative upstream storage was calculated for every watershed in the county (**Figure 8**). This dataset does not account for any transbasin diversions, providing a slightly limited but still useful perspective on how storage is dispersed through the county.

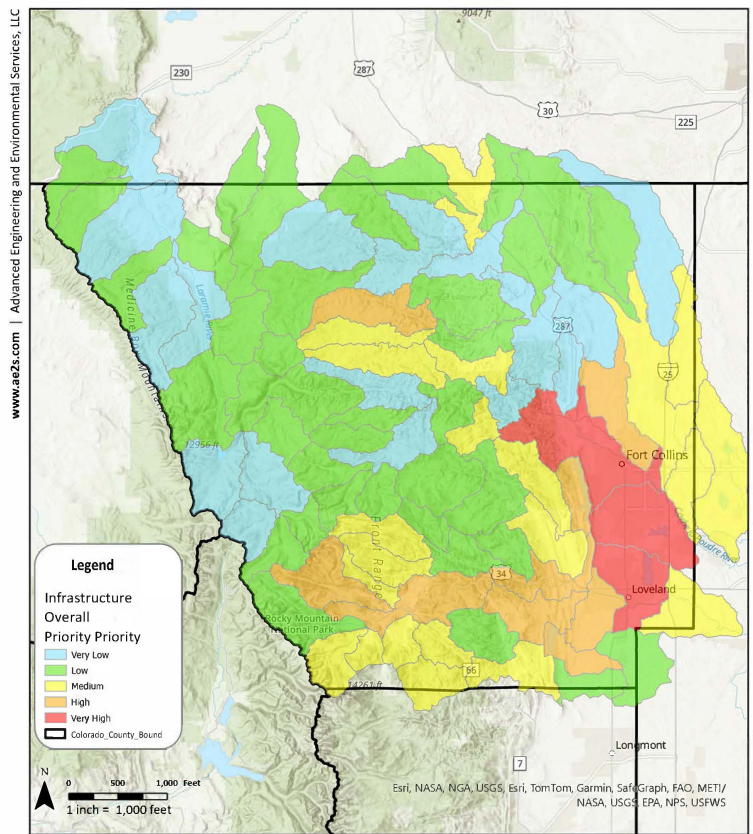


Figure 9
INFRASTRUCTURE OVERALL PRIORITY

LARIMER COUNTY WATER PLAN
Larimer County, CO



Date: 4/18/2024

Infrastructure risk criteria that were summed to analyze overall priority level (**Figure 9**):

Infrastructure Risk Criteria	Metrics/Datasets
(1) Water delivery infrastructure	Number of small systems (serving <1,000 people) that exist throughout county; areas of higher concentrations of mobile home parks because the infrastructure inside the park is often the property of the park owner that may not be maintained as well as larger community water providers; and population served vs. service area in acres.
(2) Storage	Total cumulative upstream storage for each watershed in the county (see Figure 8).

- Each of these criteria offer opportunities for the county to **Collaborate** with existing water providers and to help **Promote Water Literacy**, both of which are goals of the Water Plan.



Feedback form to provide topic-specific can be accessed here:



View the Water Plan website to learn more here:

