

FIREPLACES, WOOD STOVES & FIREPLACE INSERTS



DEFINITIONS

Fireplace –

A hearth and fire chamber or similar prepared place in which a fire may be made and which is built in conjunction with a chimney.

Factory-Built Fireplace –

A listed assembly of a fire chamber, its chimney and related factory-made parts designed for unit assembly without requiring field construction. Factory-built fireplaces are not dependent on mortar-filled joints for continued safe use.

Fireplace Insert –

A wood burning device designed to be installed in an existing fireplace.

Wood Stove –

An appliance designed for or capable of burning wood and capable of and intended for domestic space heating or domestic water heating.

Nonrestricted Area –

That part of unincorporated Larimer County located west of Range 71, or north of the north half of Township 10, and east of Range 72, as shown on the Larimer County Fireplace Area Map (see reverse)

Restricted Area –

That part of unincorporated Larimer County located outside the Nonrestricted Area as shown on the Larimer County Fireplace Area Map (see reverse).

NOTE: Wood-fired boilers are also subject to state and federal clean air requirements. Please see separate handout on boilers.

INSTALLATION REQUIREMENTS

All fireplaces installed **on or after January 1, 2002** in the Restricted Area shown on the map on the reverse side shall be one of the following:

- (i) A gas fireplace or fireplace with a gas log installed and functioning at time of final inspection;
- (ii) An electric device; or
- (iii) A fireplace that meets the Phase III (Phase II EPA) emissions standards for wood stoves established by the Colorado Air Quality Control Commission or any other clean burning device that is approved by the commission.

Within the Nonrestricted Area, fireplaces, including but not limited to masonry and factory built fireplaces (such as metal and zero clearance fireplaces), are allowed and are not required to meet the standards above.

All fireplaces installed **prior to January 1, 2002** in the Restricted Area shall be allowed to remain in use until such time as the owner voluntarily replaces it. Upon replacement, such fireplace shall be one of the types specified above.

EMISSIONS STANDARDS

All wood stoves and fireplace inserts installed **on or after January 1, 2002**, in unincorporated Larimer County shall meet the Phase III (Phase II EPA) emissions standards for wood stoves established by the Colorado Air Quality Control Commission.

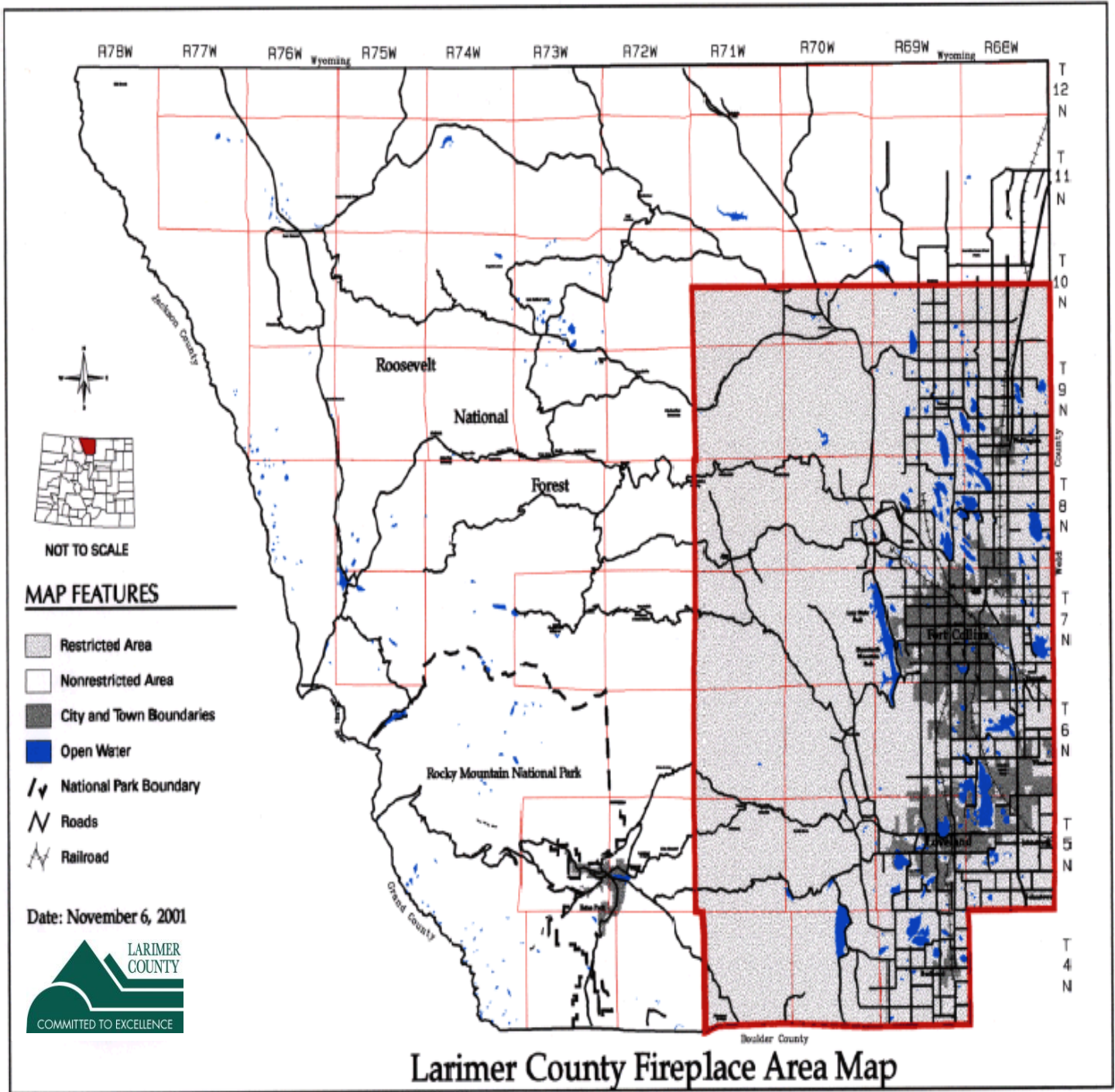
Also, particulate matter emissions must be at:

Catalytic:	4.5 grams per hour maximum
Non-catalytic:	7.5 grams per hour maximum

All wood stoves and fireplace inserts installed **prior to January 1, 2002**, in unincorporated Larimer County shall be allowed to remain in use until such time as the owner voluntarily replaces it. Upon replacement, such wood stove or fireplace insert shall meet the Phase III (Phase II EPA) emission standards for wood stoves established by the Colorado Air Quality Control Commission.

PERMITS & INSPECTIONS

A miscellaneous permit and inspection are required for factory-built fireplaces, fireplace inserts, and wood stoves. A masonry fireplace requires a combination permit to verify the building structure will support the weight. The manufacturer's recommended installation instructions must be on site for the inspector. The fireplace, fireplace insert, and/or woodstove must also meet all clearances to combustible materials per the manufacturer's instructions.



Larimer County Fireplace Area Map